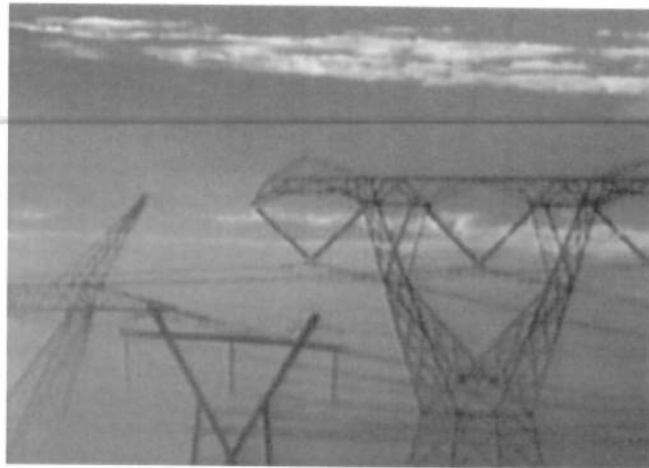




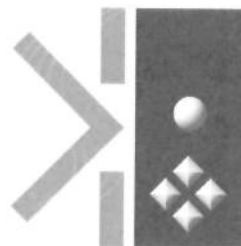
N3umbululo
heritage solutions south africa

4 Berger Road, Vorna Valley, Midrand 1685
PO Box 4106, Halfway House 1685
tel. 011 021 4937 | fax. 086 544 2177
hessa5@telkomsa.net
www.hessa.co.za

Background Information Document for EIA of proposed 250km of 400kV powerline from Borutho s/s to Nzhelele s/s



by:



N3umbululo
heritage solutions south africa

BACKGROUND INFORMATION DOCUMENT FOR THE ENVIRONMENTAL IMPACT ASSESSMENT PROCESS FOR THE PROPOSED CONSTRUCTION OF A 400KV ±250 KM POWER LINE FROM BORUTHO S/S IN MOKOPANE TO BOKMAKIERIE S/S IN NZHELELE & ASSOCIATED SUBSTATION WORKS TO ACCOMMODATE THE POWER LINE, LIMPOPO PROVINCE (DEA REFERENCE NO. 14/12/16/3/3/2/287, and NEAS REFERENCE NO. DEAT/EIA/0001049/2012

Nzumbululo Heritage Solutions South Africa (HESSA) was appointed by Eskom as an independent consultant to undertake the environmental impact assessment studies for the proposed 400kV powerline of about 250km long in Limpopo province. The proposed powerline is an activity that may have detrimental impacts on the environment. An Environmental Impact Assessment Process is undertaken to identify the potential environmental impacts of the proposed development, assess their significance and provide mitigation measures to impacts acceptable and the proposed activity sustainable. The environmental authority for the project is the National Department of Environmental Affairs.

PURPOSE OF THIS DOCUMENT

The purpose of this Background Information Document (BID) is to provide stakeholders with information about the proposed project, afford stakeholders the opportunity to register as Interested and Affected Parties (IAPs) in the environmental impact assessment process and to obtain comments and contributions from IAPs with regard to potential impacts on the environment.

This BID document will help IAPs to:

- Determine if they are interested and/or affected by the proposed project.
- Better understand the project in order to be able to provide comment.
- Understand the environmental authorisation process so that they are able to participate

The purpose of EIA process is to identify and evaluate potential impacts, to recommend measures to avoid or reduce negative environmental impacts and to enhance positive environmental impacts. The EIA decision-making authority is the Department of Environmental Affairs (DEA) in accordance with section 24 (5) of the National Environmental Management Act (Act 107 of 1998). The EIA will be conducted according to DEA's EIA guidelines.

PROJECT DETAILS

The proposed detailed project description of the project is as follows.

The project entails construction of a 400kV power line of approximately 250km long from Borutho Substation to Bokmakierie and the

between the two substations.

Motivation for the project

The Polokwane Customer Load Network (CLN) consists mainly of platinum and zinc mining activities as well as rural loads. The Polokwane Customer Load Network (CLN), including the Tabor and Spencer power corridor, remains susceptible to voltage instability and is the weakest part of the Northern Grid network due to being operated beyond its reliability power transfer limit. In addition to this, the Polokwane CLN, i.e. Tabor and Spencer 275kV and 132kV network is susceptible to low voltages regardless the approved and commissioned network strengthening in year 2010 below. This project will help in addressing the existing network constraints and ensure infrastructural reliability and adequate supply of electricity. Other advantages include:

- It meets the 20 year Tabor and Spencer end state load of 846MW, with 100MW new load connected,
- Ensures reliable supply for the forecasted Tabor end state load of 466MW,
- Ensures reliable supply for the forecasted Spencer end state load of 380MW,
- No load shedding risk during N-1 transformation loss at either Tabor or Spencer MTS, and
- Creates spare 400kV line capacity from Witkop Substation.

Project location

The project area is located within

- Vhembe District Municipality
- Mogalakwena Local Municipality
- Makhado Local Municipality
- Blouberg Local Municipality
- Capricorn District Municipality
- Molemole Local Municipality
- Aganang Local Municipality

Please refer to attached map for detailed location and proposed alternative routes- Appendix 1.

LEGAL REQUIREMENTS

Activities applied for:

The following activity listed in terms of Sections 24 and 24D of NEMA (Government Notice No. 544 and 546 of 2 August 2010) will be assessed in the EIA for the project. The EIA process will be undertaken in accordance with the regulations promulgated in terms of the National Environmental Management Act (Act 107 of 1998) as amended:

associated works to integrate the power line

Indicate the number and date of the relevant notice:	Activity No (s) (in terms of the relevant notice) :	Describe each listed activity as per project description ¹ :
GNR545(Listing Notice 1) of 18 June 2010	8	The construction of facilities or infrastructure for the transmission and distribution of electricity with a capacity of 275 kilovolts or more, outside an urban area or industrial complex
GNR544(Listing Notice 1) of 18 June 2010	10	<p>The construction of facilities or infrastructure for the transmission and distribution of electricity</p> <p>(1) (i) outside urban areas or industrial complexes with a capacity of more than 33 but less than 275 kilovolts</p> <p>(ii) inside urban areas or industrial complexes with a capacity of 275 kilovolts or more the construction</p> <ul style="list-style-type: none"> (i) canals (ii) channels (iii) bridges (iv) dams (v) weirs (vi) bulk storm water outlet structures (vii) marinas
	22	<p>The construction of a road, outside urban areas</p> <ul style="list-style-type: none"> (i) with a reserve wider than 13,5 meters or (ii) where no reserve exists where the road is wider than 8 meters, or (iii) for which an environmental authorisation was obtained for the route determination in terms of activity 5 in government Notice 387 of 2006 or activity 18 in Notice 545 of 2010
	24	The transformation of land bigger than 1000 square meters, to residential retail, commercial, industrial or institutional use, where, at the time of the coming into effect of this Schedule such land was zoned open space or had an equivalent zoning.
	26	<p>Any process or activity identified in terms of section 53(1) of the National Environmental Management: Biodiversity Act, 2004 (Act No. 10 of 2004).</p> <p>The decommissioning of existing facilities or infrastructure for</p> <ul style="list-style-type: none"> (i) electricity generation with a threshold of more than 10MW (ii) electricity transmission and distribution with a threshold of more than 132kV (iii) nuclear reactors and storage of nuclear fuel (iv) activities, where the facility or the land on which it is located is contained (v) storage or storage and handling of dangerous goods of more than 80 cubic metres
	38	The expansion of facilities for the transmission and distribution of electricity where the expanded capacity will exceed 275 kilovolts and the development footprint will increase.
	47	<p>The widening of a road by more than 6 metres, or the lengthening of a road by more than 1 kilometre</p> <ul style="list-style-type: none"> (i) where the existing reserve is wider than 13, 5 meters, or (ii) where no reserve exists, where the existing road is wider than 8 metres- excluding widening or lengthening occurring inside urban areas.
GNR546(Listing Notice 1) of 18 June 2010	4	<p>The construction of a road wider than 4 metres with a reserve less than 4 metres with a reserve less than 13, 5</p> <ul style="list-style-type: none"> (i) in an estuary:

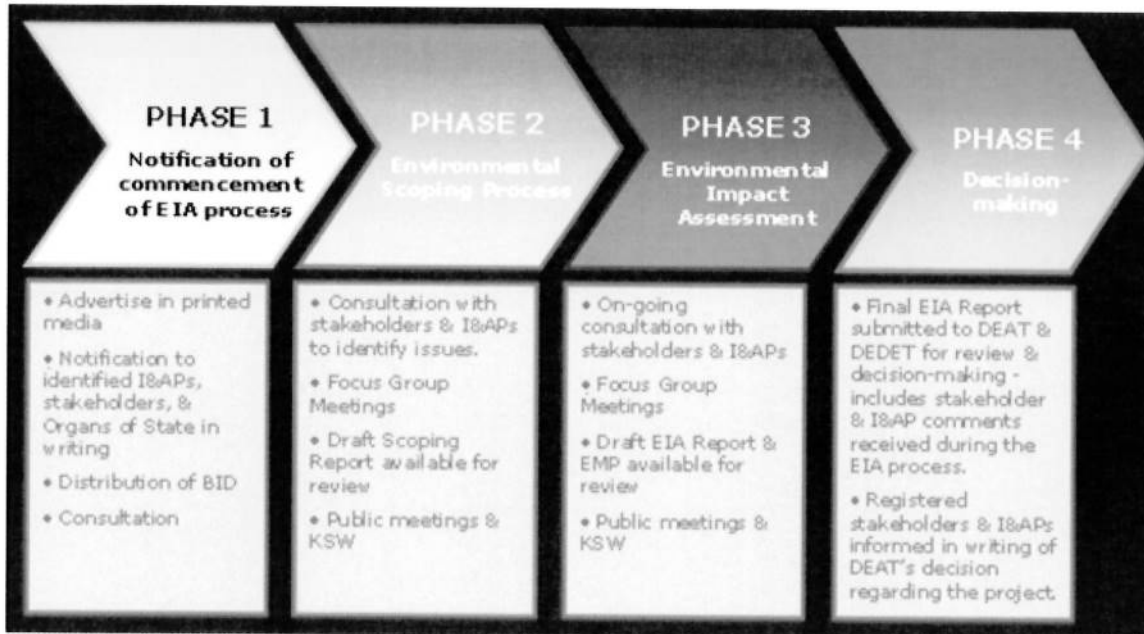
¹ Please note that this description should not be a verbatim repetition of the listed activity as contained in the relevant Government Notice, but should be a brief description of activities to be undertaken as per the project description

	12	<p>(ii) outside urban areas, in</p> <ul style="list-style-type: none"> (aa) A procted area identified in terms of NEMPAA, excluding conservancies (bb) National Procted Area Expansion Focus area (cc) Sensitive areas as identified in an environmental management framework as contemplated in chapter 5 of the act and as adopted by the competent authority (dd) Sites or areas identified in terms of an international Convention (ee) Critical biodiversity areas as identified systematic biodiversity plans adopted by the competant authority in bioregional plans (ff) core areas in biosphere reserve (gg) Areas within 10 kilometres from national parks or world heritage sites or 5 kilometres from any other procted areas identified in terms of NEMPAA or from the core areas of a biosphere reserve. (hh) Areas seawards of the development setback line or within 1 kilometre from the high- water mark of the sea if no such development setback is detrmined <p>(iii) in urban areas</p> <ul style="list-style-type: none"> (aa) Areas zoned for use as public open space (bb) Areas designated for conservation use in Spatial Development Framework adopted by the competent authority or zoned for a conservation purpose, (cc) seawards of the development setback line or within urban protected areas. <p>The clearance of an area of 3000 square metres or more vegetation where 75% or more of the vegetative cover consttitutes indegenous vegetation</p> <ul style="list-style-type: none"> (a) within any critical endangered or endangered ecosystem listed in terms of section 52 of the NEMBA or prior to the publication of such a list, within an area that has been identified as critically endangered in the National Spatial Biodiversity Assessment 2004 (b) within critical biodiversity areas identified in bioregional plans (c) Wthin the littoral active zone or 100 metres inland from high water mark of the sea or an estuary, whichever distance is the greater, excluding where such removal will occur behnd the development setback line on erven in urban area
	19	<p>The widening of a road by more than 4 metres, or the lengthening of a road by more than 1 kilometre</p> <ul style="list-style-type: none"> (i) in an estuary (ii) outside urbarn areas, in <ul style="list-style-type: none"> (aa) A procted area identified in terms of NEMPAA, excluding conservancies (bb) National procted Area Expansion Strategy Focus areas (cc) Sensitive areas as identiified in an environmental management ramework as completed in chapter 5 of the Act and as apopted by the completed authority: (dd) Sites or areas identified in terms of an international convection (ee) Critical biodiversity areas as identified in systematic biodiversity plans adopted by the competent authority or in bioregional, (ff) Core areas in biosphere reservers (gg) Areas within 10 kilometres from national parks or world heritage sites or 5 kilometres from any other protected area identified in tems of NEMPAA or from the core area of a biospheree reserve, (hh) Areas seawards of the development setback line or within 1 kilometre from the high-water mark of the sea if no such development setback line is determined, <p>(ii) Areas on the watercourse side of the development setback line or within 100 metres from the edge of a watercourse when no such setback line has been determined</p> <p>(iii) inside urban areas:</p> <ul style="list-style-type: none"> (aa) Areas zoned for use as public open space; (bb) Areas designated for conservation use in Spatial Development Frameworks adopted by the competed authority or zoned for a conservation

purpose.

ENVIRONMENTAL IMPACT ASSESSMENT PROCESS

What is an Environmental Impact Assessment Process?



An Environmental Impact Assessment (EIA) is the level of environmental assessment applied to activities listed in 2, Government Notice No. 544 as mentioned above. These are larger scale activities; the impacts of these activities are normally expected to have detrimental effect on the environment.

Typically, EIA is applied to activities that are considered likely to have significant environmental impacts and, therefore, to requires a full-blown and detailed Environmental Impact Assessment. A Scoping Report and Environmental Impact Report are more concise analysis of the environmental impacts of the proposed activity than a Basic Assessment Report. The process requires public notice and participation, consideration of the potential environmental impacts of the activity, assessment of possible mitigation measures, and an assessment of whether there are any significant issues or impacts that might require further investigation.

Public Participation Process (PPP) is a cornerstone of any EIA to ensure that the process is fair, open, transparent, inclusive and provides stakeholders with sufficient information, affords them ample opportunity to contribute and makes them feel that their contributions are valued.

The PPP is designed to provide sufficient and accessible information to IAPs in an objective manner to assist them to:

- Raise issues of concern and make suggestions for alternatives and enhanced benefits;
- Contribute local knowledge;
- Verify that their issues have been captured and considered by the technical investigations;
- Comment on the findings of the process.

As part of the PPP, public meetings will be held in accessible venues in close proximity to the study area. Registered IAPs in addition to identified key stakeholders will be notified of these meetings. These meetings will aim to:

- Provide project specific information,
- Explain the environmental and public participation processes that will be followed, and
- Provide IAPs with an opportunity to contribute issues of concern.

APPROACH TO THE EIA PROCESS

Scoping Phase

An EIA is conducted in phases, as outlined below. The provisional scheduling of these phases for the proposed

project is also indicated. The EIA process will include the following activities:

- Meeting with authorities to agree on process and study requirements;
- Distribution of this PPP material with invitation to contribute to the EIA process to IAPs in the project area and beyond;
- Advertisements in selected local newspapers to announce opportunities to participate;
- Stakeholder meetings with relevant representatives to announce the project;
- Progress feedback letter to be issued and announcements made of the availability of Draft Scoping Report and Issues and Response Report;
- Distribution of a Draft Scoping Report, including Issues and Response Report, for comment at strategic places;
- Submission of a Final Scoping Report, capturing all issues raised for the impact assessment, to the DEA;

EIA Phase

This is a technical phase where specialists will conduct thorough studies and compare project alternatives to be included in the report. This phase also includes drafting of the Environmental Management Programme for proposed activities. The PPP will then include:

- Progress feedback letter to be issued and announcements made of the availability of Draft EIR and Issues and Response Report;
- Distribution of a Draft EIR and EMPR, including Issues and Response Report, for comment at strategic places;
- Stakeholder meetings with relevant representatives give feedback from specialist findings;
- Submission of a Final EIR and EMPR, capturing all issues raised, and assessed for the impact assessment, to the DEA;
- Progress feedback letter to stakeholders about the Record of Decision after decision making of DEA.

Decision-making Phase:

- After obtaining environmental authorization for the project, advise stakeholders of the decision as well as of ways to appeal the decision.

PRELIMINARY LIST OF ENVIRONMENTAL ISSUES

A number of potential environmental issues have already been identified and are listed here to assist IAPs to understand the investigations to be undertaken as part of the environmental assessment process

Potential environmental issues are:

- Impacts on the ecology (fauna and flora);
- Impacts on the birds
- Impacts on Agriculture
- Impacts on watercourses or water bodies;
- Potential of traffic impacts during construction land features
- Safety and security
- Archaeological and paleontological sites
- Job creation
- Loss of Aesthetics (visual impact)
- Hydrology and drainage
- Existing and future developments
- Loss of amenities
- Proximity to developed areas
- Air pollution
- Benefits of development to the local and regional economy.
- Potential nuisance impacts during construction, e.g. dust, noise
- Pollution and waste management.

Specialists Studies

A team of independent Specialists will be appointed to assess some of these impacts in terms of their significance in accordance with the guidelines for EIA published by the Department of Environmental Affairs (DEA). The specialist studies includes:

- Avifauna
- Botanical
- Ecological
- Heritage
- Wetland delineation and floodline determination
- Agriculture
- Social

IAP REGISTRATION

In terms of the EIA regulations, this proposed project requires assessment and communication of potential environmental impacts of activities based on the procedure as described in Sections 27 to 36 of the Regulations R543 of August 2010.

IAPs are requested to register to ensure that they are sent all relevant correspondence and are notified of important dates for meetings and when project documents will be available for comment.

You will be included on the IAPs database and receive further documents for comment when they are available. Your comment will ensure that all relevant issues are incorporated in the Scoping Report and final EIA Report. Either complete and submit the enclosed registration /comment sheet, write a letter, call or e-mail our office, if you wish to raise any concerns or comments regarding this EIA.

Who are IAPs?

Any person or group of people concerned with, or affected by an activity and its consequences. This includes the authorities, local communities, investors, workers, customers and consumers, environmental interest groups and the general public.

Your comment is important

Your comments will ensure that all relevant issues are evaluated in the EIA process. You are requested to complete the enclosed registration/comment sheet, write a letter, call or email our office (see information box for contact details). You will then receive further information about the proposed project.

Please also inform us if you require a copy of the EIA Regulations, the User Guide to the National Environmental Management Act (NEMA) or any other material that will assist you to comment.

Interested and Affected Parties (IAPs) identified thus far:

- Limpopo Department of Environmental Affairs
- Limpopo Natal Department of Roads and Transport
- Limpopo Heritage Resources Agency
- South African National Road Agency
- Land Owners

If you know of any other companies, group or individual that may be an IAP please feel free to inform us.

Return address for comments:

Nzumbululo Heritage Solutions
P.O. Box 4106, Halfway House, 1685.

Tel: 011 021 4937

Fax: 086 544 2177

Email: environment@nzumbululo.com/ mogajanek@nzumbululo.com

**NOTICE FOR PUBLIC MEETING AND REVIEW OF THE DRAFT SCOPING REPORT FOR THE PROPOSED BORUTHO- BOKMAKIERIE ±250KM POWERLINES& ASSOCIATED
SUBSTATION WORKS**

DEA Ref: 14/12/16/3/3/2/287, and NEAS Reference No. DEAT/ EIA/0001049/2012

Notice is given in terms of Regulation 54 of the Regulations published in Government Notice R543 of 18 June 2010 published in terms of Chapter 6 of the National Environment Management Act, 1998 (Act 107 of 1998) , of the intent to submit a Scoping Report to the Department of Environmental Affairs (DEA) for the aforementioned project. The public is hereby notified of the availability of the Draft Scoping Report for review and commented and further invited to attend the Public Participation meetings for the aforementioned project.

PUBLIC REVIEW OF THE DRAFT SCOPING REPORT

The Draft Scoping Report will be available for Public Review from 14th May 2012- 18th June 2012. The report may be reviewed from the following venues and sources:

Venue/source	Address	Contact Details
Limpopo Department Of Environmental Agriculture and Rural Development	Cnr. Nelson Dr and Selati Rd, Polokwane	015 780 6311?? Steve Mokh???
Vhembe district Municipality	Old Parliament, Government Complex,Tusk Venda Street,Thohoyandou.	015 960 3538 Azwindi Mudau
Makhado Local Mucipality	83 Krogh Street Loius Trichardt	015 519 3000 Tendani Ntisieni
Blouberg Local Municipality	2nd Building MogwadiSenwabarwana Road Senwabarwana	015 505 7100 Junias Machaba
Capricorn District Municipality	41 Biccard Str, Polokwane,0700	015 294 1000 Isaac Motsuki
Mogalakwena Local Municipality	54 RETIEF STREET,MOKOPANE,0600	015 491 9607 L. J Sebola
Molemole Local municipality	303 Church Street,MOGWADI	015 501 0243 Mamonedi Moabelo
Aganang Local Municipality	Ga- Moraba Cnr Gilead & Knobel, Ceres Village, Moletjie	Phuthi Mahloko 015 295 1435
Limpopo Farmers Union	MTK VIVO Main Street, Vivo 0924	079 699 6032 M. Miler

INVITATION TO PUBLIC/ FOCUS MEETING

All stakeholders and interested and affected parties are invited to attend the public meeting as per the details below.

Municipality	Date	Communities	Time	Venue
Aganang Municipality	28/05/2012	Jupiter	12 30-1:30	Jupiter Hall
		Phethole	15:00-16 00	Pula Seopa Primary
	29/05/2012	Venus Sefahla	09:00-10:00	Matsaung Lounge
	29/05/2012	Kalkspruit	12:30-13:30	Maraba Tribal office
	29/05/2012	Boratopelo	15:00-14:00	Kgomontswiri primary school
	29/05/2012	Goedgenden	1700-1800	Maphutha Primary school
	30/05/2012	Ntloane	09:00-10:00	Kgopodi Primary school
	30/05/2012	Tibabefo	12:00-13:00	Tibane Tax Rank Hall
	30/05/2012	Seema/ Schoongengeleven	14:00-15:00	Seema Community Hall
Farmers Union	31/05/2012	Farmers Union Vivo	10 am 11 am	Farmers union Hall Vivo

Should you wish to RSVP please do so by sending an acceptance of this invitation to the details below. For any further queries, comment or clarity do not hesitate to contact us.

Your details in here	Logo here
	This advert is prepared for and on behalf of Eskom