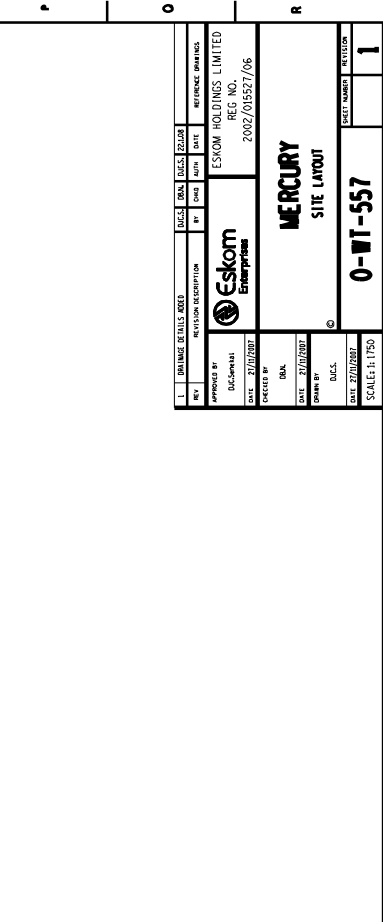
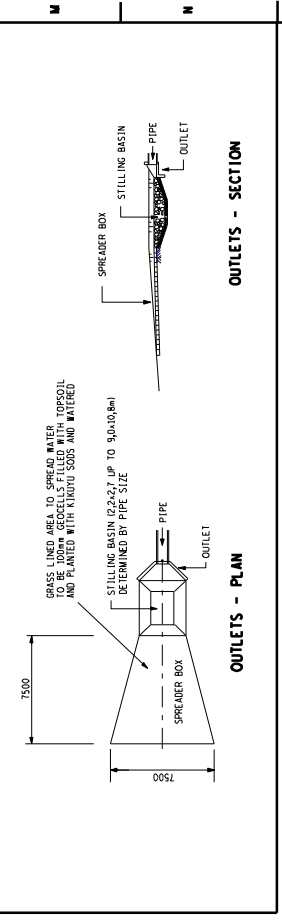
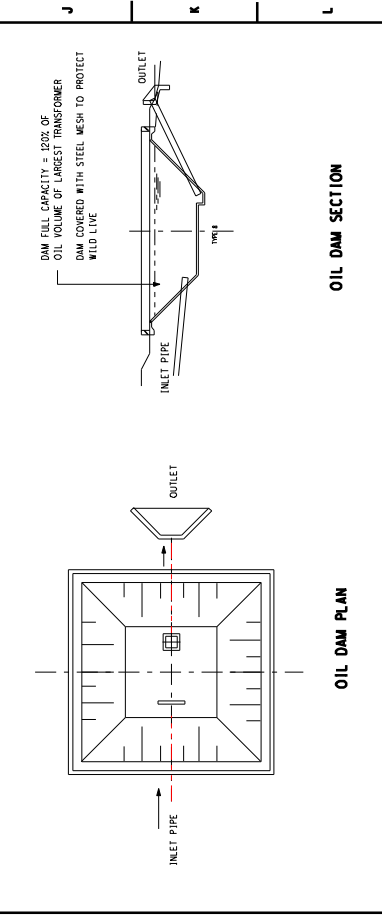
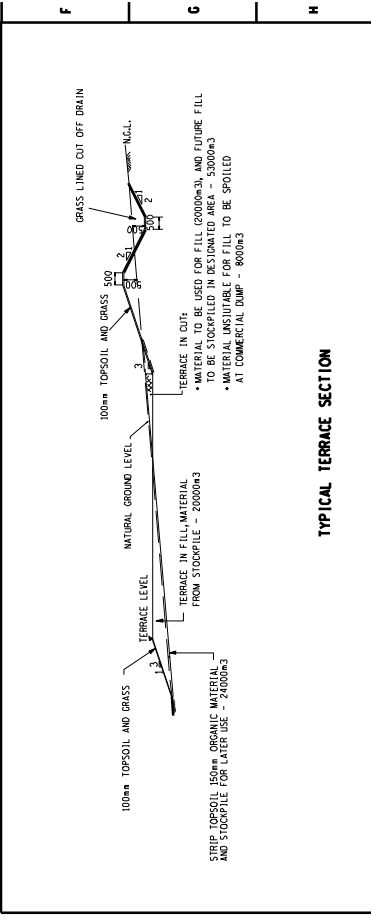


**LEGEND**

	OIL DRAINAGE - 100mm CLASS SUBSOIL AND SOCKET PIPES WITH MECHANICAL JOINTS Laid on CLASS 'B' BEDDING
	STORM WATER DRAINAGE - VARIOUS DIAMETER CONCRETE PIPES CLASS 'B' ON TYPE 'B' BEDDING
	SUB-SOIL DRAIN - 4, 2 OR 3 Ø 100 mm Ø PVC SLOTTED PIPES WITH FALL 1:250 MIN. SEE DRG 054/290 SH 128
	Ø 100 mm Ø PVC SEWER PIPE - MIN. SLOPE 1:40
	TYPE 'B' BRICK MANHOLE - FOR DETAILS SEE DRG 054/290 SH 13
	PIPE OUTLET STRUCTURE - FOR DETAILS SEE DRG 054/290 SH 13

- NOTES:**
1. THE PROPERTY TO BE FENCED-OFF WITH A STANDARD BOUNDARY TYPE FENCE BEFORE COMMENCEMENT OF ANY CONSTRUCTION ACTIVITIES
  2. CUT-OFF DRAINS AROUND THE PROPOSED CONSTRUCTION SITE TO BE INSTALLED TO MINIMIZE THE RISK OF POLLUTION OF RUNOFF WATER ONTO AND OFF THE CONSTRUCTION SITE
  3. THE DRAINAGE SYSTEM CONSIST OF A NETWORK OF SUBSOIL BRANCHES CONNECTED TO CONCRETE PIPES WHICH ARE LINKED TO OUTLET STRUCTURES WITH A STILLING BASIN AND GRASSED SPREADER BOX BEFORE THE WATER RUN TO THE NATURAL WATER COURSES
  4. THE FIRE PROTECTION SYSTEM CONSIST OF A PIPE NETWORK TO CONVEY OIL IN THE CASE OF A OIL SPILL TO THE OPEN OIL HOLDING DAM FROM WHERE THE OIL CAN BE RECOVERED WITHOUT THE RISK OF POLLUTION. STORAGE/STOCKPILE TO BE REHABILITATED AFTERWARDS AND GRASSED
  5. SIZES OF TERRACES COVERED WITH TOPSOIL TO BE GRASSED OR AREAS USED FOR CONSTRUCTION SITES AND SEWER TREATMENT PLANTS
  6. SEWER TREATMENT PLANTS: CUT-OFF BASIN WATER THE RAINOUT TO BE BIG-WHITE IN SYSTEM CONSISTING OF SEPTIC TANK CHAMBER THEN A BIOLOGICAL REACTOR FOR PLANT, AND FOLLOWED BY A CHAMBER TREATED WATER TO BE DISPERSE INTO THE WELD



EXISTING PROPERTY CO-ORDINATES SYSTEM WGS 84 Lo 27'

POINT	Y	X
A	18 272.168	2 987 712.241
B	17 725.029	2 987 600.243
C	17 608.198	2 988 172.429
D	17 857.512	2 988 507.593
E	18 140.948	2 986 350.440

PROPOSED ADDITIONAL PROPERTY CO-ORDINATES SYSTEM WGS 84 Lo 27'

POINT	Y	X
H	18 240.314	2 987 866.938
J	18 662.125	2 981 900.848
K	18 807.950	2 987 366.888
L	17 815.304	2 987 158.172

**Eskom Enterprises**  
 ESCOM HOLDINGS LIMITED  
 REG. NO. 2002/015527/06  
 PROJECT NO. 054/290  
 DRAWING NO. 054/290 SH 13  
 SCALE: 1:1750  
**MERCURY**  
 SITE LAYOUT  
**0-WT-557**  
 SCALE: 1:1750