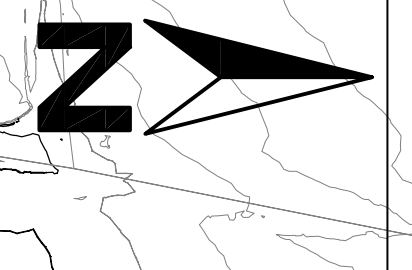
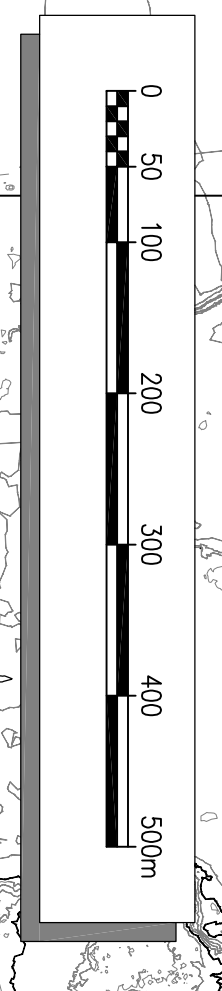


**ASH DISPOSAL FACILITY NOTES:**

- 1 FOOTPRINT AREA = 642,716.23m<sup>2</sup>
- 1 TOTAL VOLUME STOCKED = 176,190.25m<sup>3</sup>

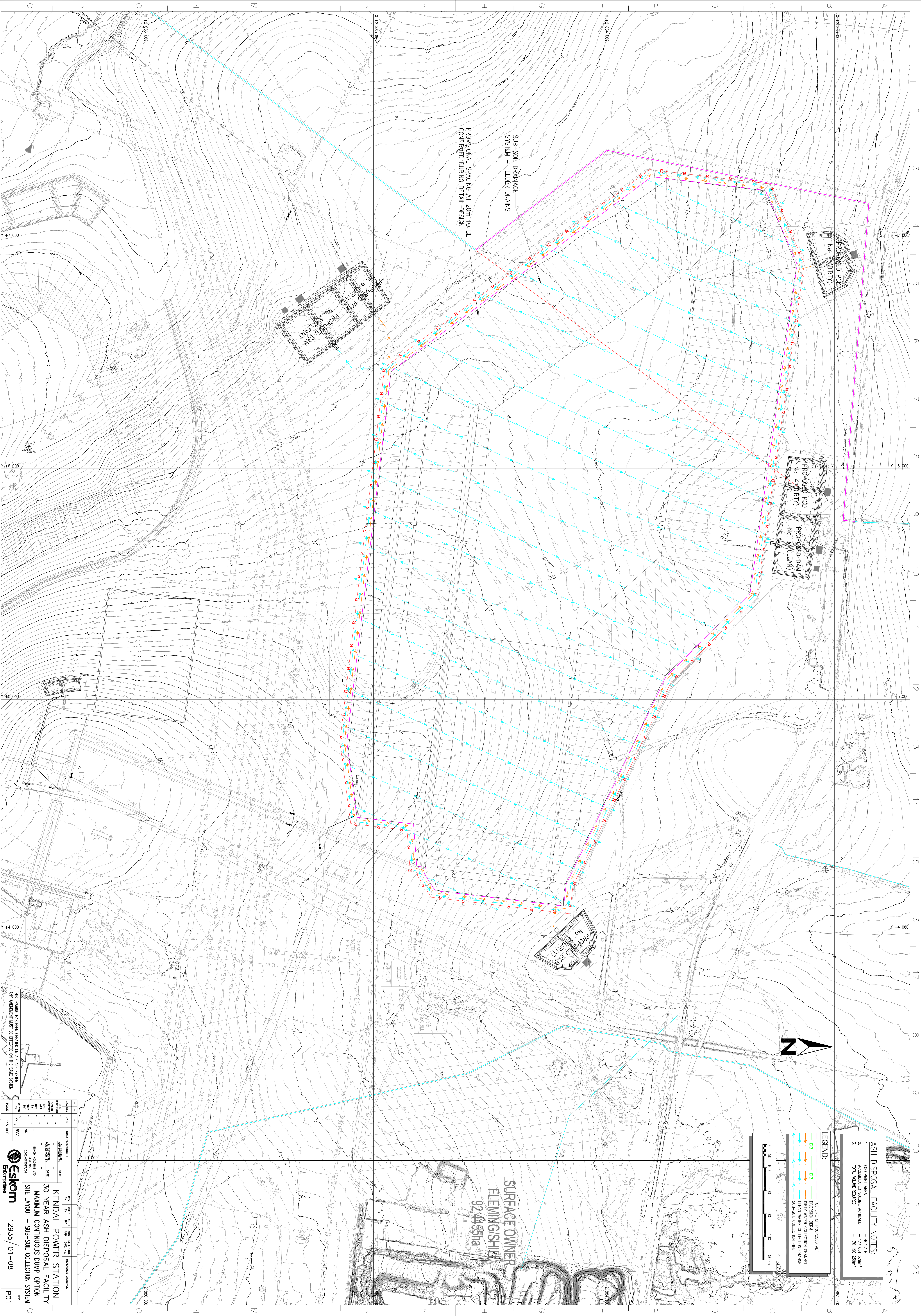
**LEGEND:**

- THE LINE OF PROPOSED ADF
- DIMENSION BEAM
- DIRTY WATER COLLECTION CHANNEL
- CLEAN WATER COLLECTION CHANNEL
- SUB-SOIL COLLECTION PIPE



SUB-SOIL DRAINAGE SYSTEM - FEEDER DRAINS  
PROVISIONAL SPACING AT 20m TO BE CONFIRMED DURING DETAIL DESIGN

SURFACE OWNER  
FLEMINGSHILL  
92.4455ha



NO.	DATE	DESCRIPTION	BY	CHKD BY	REVISIONS COMMENTS
1	13/08/2018	ISSUED FOR PERMIT	ADL	ADL	
2	13/08/2018	REVISED FOR PERMIT	ADL	ADL	
3	13/08/2018	REVISED FOR PERMIT	ADL	ADL	

**ESKOM**  
KENDAL POWER STATION  
30 YEAR ASH DISPOSAL FACILITY  
MAXIMUM CONTINUOUS DUMP OPTION  
SITE LAYOUT - SUB-SOIL COLLECTION SYSTEM

12935 / 01-08  
PO1