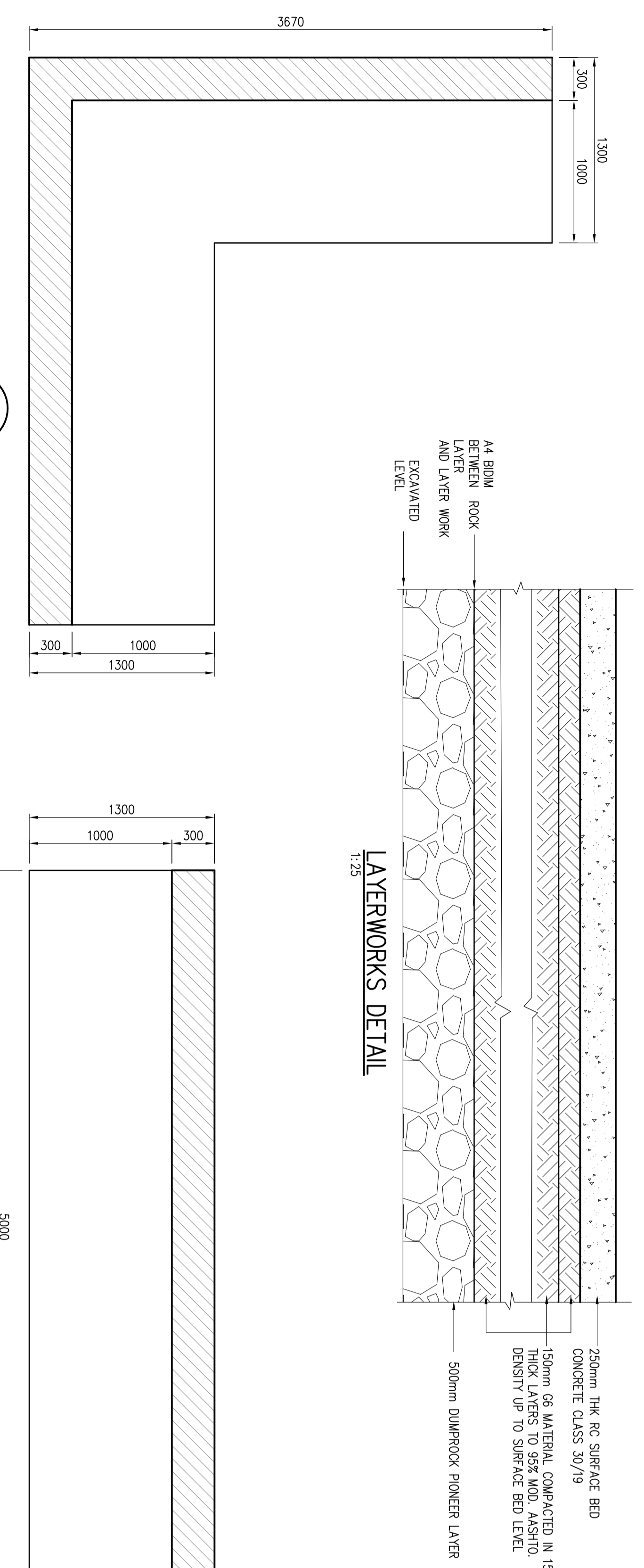


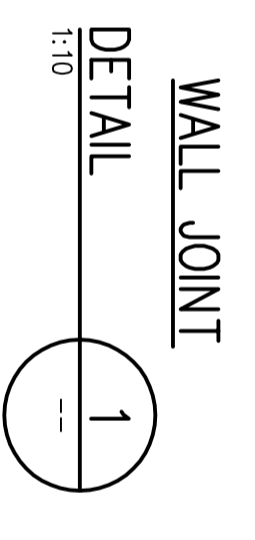
LAYOUT OF EMERGENCY DUMP
1:500

COORDINATE LIST
WSS 84

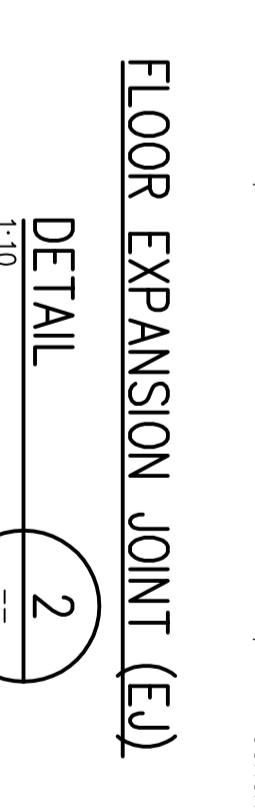
POINT	SETTING OUT POINTS	X-COORD	Y-COORD
SPP-1	2886449.024	4726.740	2886449.024
SPP-2	2886442.866	4748.855	2886442.866
SPP-3	2886471.119	4733.059	2886471.119
SPP-4	2886461.137	4779.267	2886461.137
SPP-5	2886532.092	4746.892	2886532.092
SPP-6	2886527.993	4739.750	2886527.993
SPP-7	2886536.763	4740.904	2886536.763
SPP-8	2886532.092	4811.029	2886532.092
SPP-9	2886526.578	4864.515	2886526.578
SPP-10	2886283.179	4856.004	2886283.179
SPP-11	2886243.502	4826.699	2886243.502
SPP-12	2886243.502	4826.699	2886243.502
SPP-13	2886243.502	4826.699	2886243.502
SPP-14	2886243.502	4826.699	2886243.502



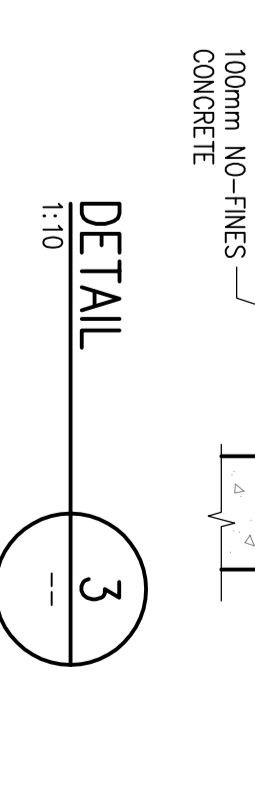
LAYERWORKS DETAIL
1:25



WALL JOINT
DETAIL
1:10



FLOOR EXPANSION JOINT (EJ)
DETAIL
1:10



WALL JOINT
DETAIL
1:10

PANEL P1
1:25

PANEL P2
1:25

NO.	DATE	REVISION	BY	CHKD	APP'D	DESCRIPTION
1	12/10/01	ISSUED FOR TENDER

THIS DRAWING HAS BEEN CREATED ON A CAD SYSTEM
 ANY AMENDMENT MUST BE EFFECTED ON THE SAME SYSTEM

Escom
 12810/01-17
 P01

1 2 3 4 5 6 7 8 9 10 11 12 13 14 15 16 17 18 19 20 21 22 23
 Q P O N M L K J I H G F E D C B A