

Proposed Used Fuel Transient Interim Storage Facility at Koeberg Nuclear Power Station (KNPS)

ENVIRONMENTAL IMPACT ASSESSMENT (EIA):

Pre-Application Stakeholder Engagement Process



Koeberg Nuclear Power Station

PUBLIC OPEN DAY
27 October 2015

WELCOME TO THE EIA PUBLIC OPEN DAY

PURPOSE OF THE OPEN DAY:

- ❖ To introduce the proposed project to the public;
- ❖ To provide a platform for stakeholders to discuss the proposed project; and
- ❖ The independent environmental consultants (SRK) and proponent (Eskom) are at the Open Day to discuss the project and answer your questions.

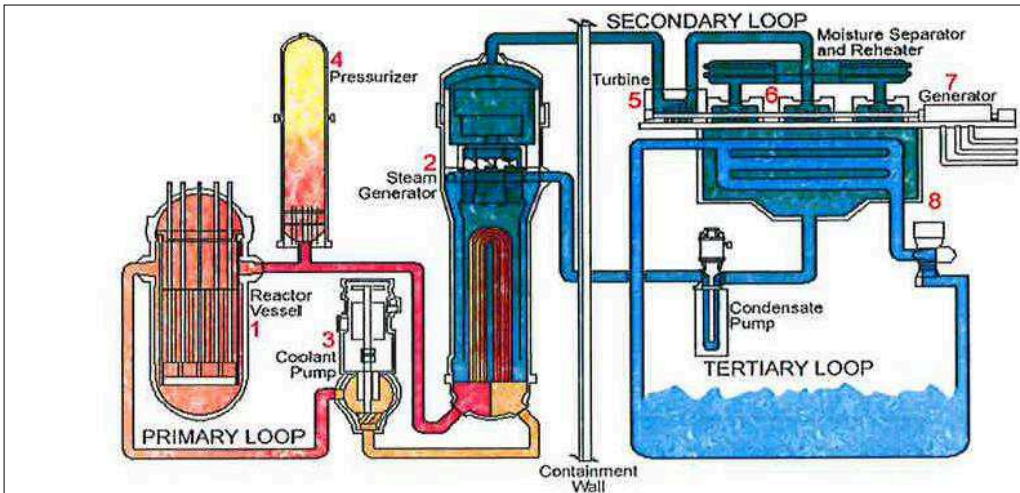
YOU ARE INVITED TO:

- ❖ Fill in the attendance register;
- ❖ Read about the proposed project;
- ❖ Raise and discuss issues and concerns with the project team;
- ❖ Record your views on a comment sheet; and
- ❖ Register as a stakeholder on the project database and be informed of further opportunities to participate in the project.



THE NUCLEAR PROCESS

- ❖ Koeberg has **two nuclear reactor units**, which are essentially heat sources. Heat is generated through the **nuclear fission process**, making use of uranium.
- ❖ Heat is transferred by water to **steam generators** where water from a secondary loop is turned into steam. This steam drives a turbine which is connected to a generator, which uses the **rotational energy** to generate electricity.

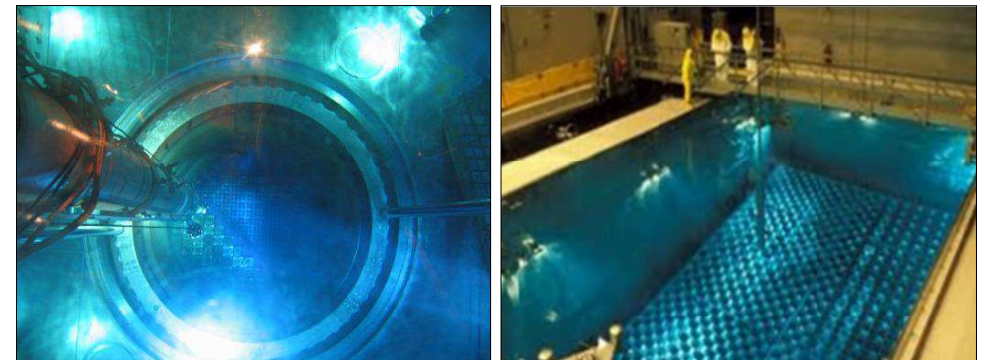


The Nuclear Process

Source: Eskom Fact Sheet "Generating Electricity at a Nuclear Power Station", 2015

THE NUCLEAR PROCESS

- ❖ **Nuclear fuel** in the reactor core consists of pellets of enriched uranium dioxide encased in long pencil-thick metal tubes, called fuel rods. These fuel rods are **bundled to form fuel assemblies**.
- ❖ Used fuel is nuclear fuel that has been **used in the fission process** and is no longer useful in sustaining a nuclear reaction.
- ❖ Used fuel assemblies are currently **stored underwater** in storage racks in spent fuel pools (SFPs) at Koeberg. Water **cools the fuel** and serves as a shield from radiation.



Spent Fuel removed from Koeberg Nuclear Reactors

Source: Eskom, 2015

Spent fuel stored in spent fuel pools

Source: Eskom, 2015

PROJECT MOTIVATION

- ❖ The **SFPs storing used fuel** assemblies at Koeberg are **nearing capacity**.
- ❖ To ensure continued plant operation, additional storage capacity is required to accommodate further used fuel generated at KNPS.
- ❖ Eskom proposes to construct a Transient Interim Storage Facility (TISF) for the **temporary storage of used fuel in dry storage casks** at the KNPS.
- ❖ The TISF will be designed to accommodate used nuclear fuel from the reactors for the operational life of the power station, thereby ensuring the continued operation of KNPS.



Horizontal concrete systems

Source: <http://berniesteam.com/wp-content/uploads/2012/12/DSC02774.jpg>



Concrete dry storage casks

Source: Eskom, 2015

PROJECT MOTIVATION

- ❖ The proposed TISF forms part of the **Koeberg Spent Fuel Storage Project** :
 - ❖ **Phase 1A**: Procure 7 dry storage casks to facilitate operation.
 - ❖ **Phase 1B**: Maximise storage capacity in spent fuel pools.
 - ❖ **Phase 2**: Procure approximately 40 additional dry storage casks to allow ongoing operation of KNPS until 2025.
 - ❖ **Phase 3**: Construct the TISF for the storage of the casks procured in Phase 2.
- ❖ The project assumes that a **Central Interim Storage Facility** CISF will be developed for use by 2025.
- ❖ Used fuel assemblies generated beyond 2025 will also be stored in casks at the TISF should the CISF not be available.

AUTHORISATIONS REQUIRED

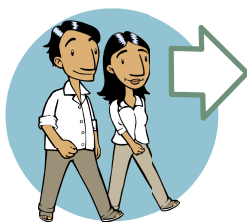
❖ The proposed Transient Interim Storage Facility (TISF) requires **Environmental Authorisation (EA)** in terms of the National Environmental Management Act 107 of 1998 (NEMA) and the EIA Regulations, 2014, for the following **listed activities**:

❖ Listing Notice 1: (27) clearance of more than 1ha, but less than 20ha, of indigenous vegetation

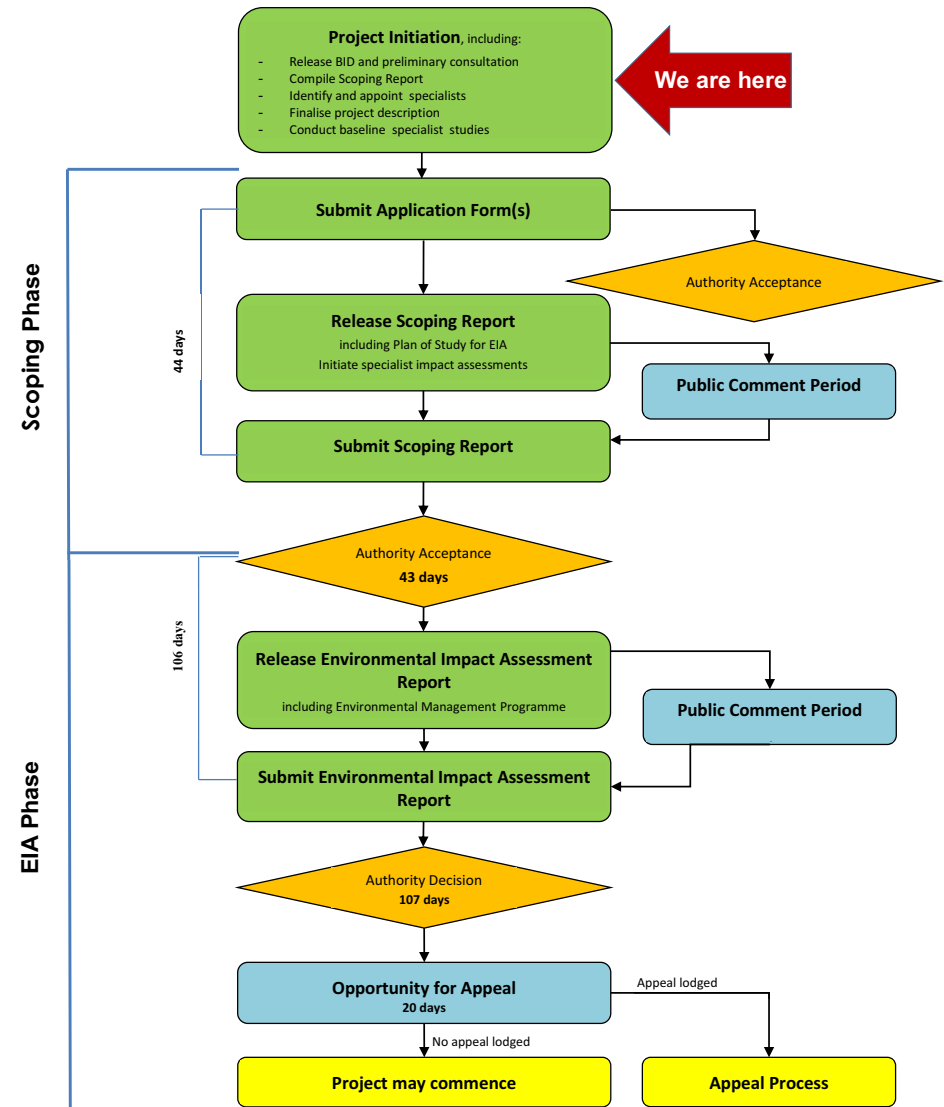
❖ Listing Notice 2: (3) development for nuclear activities (for storage of used fuel)

❖ Listing Notice 3: (12) clearance of 300m² or more of indigenous vegetation within any critically endangered or endangered ecosystem in the Western Cape

❖ The proposed TISF requires licensing from the **National Nuclear Regulator (NNR)** in terms of the National Nuclear Regulator Act 47 of 1999 .



EIA PROCESS



EIA PROCESS

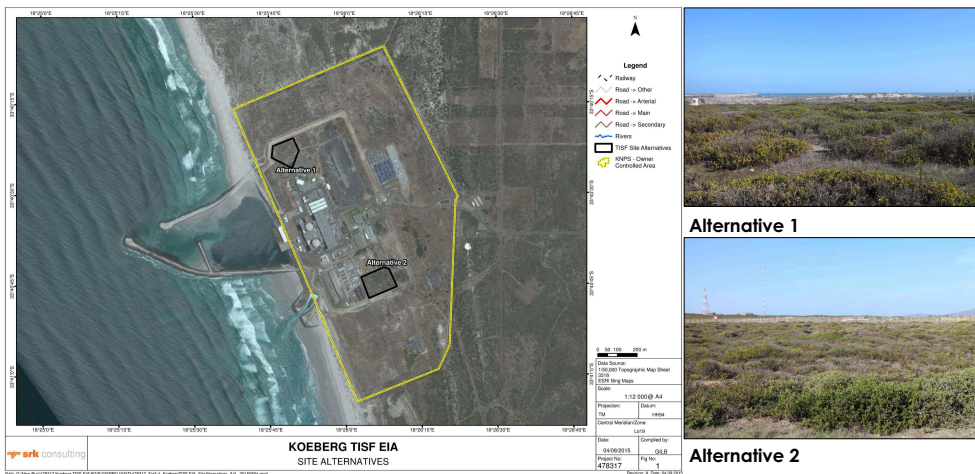
- ❖ A **Background Information Document (BID)** has been released to inform potential **stakeholders** about the proposed project and EIA process.
- ❖ Once stakeholders have registered and raised initial comments, an **Application Form** for Environmental Authorisation (EA) will be submitted to the Department of Environmental Affairs (DEA).
- ❖ The **Scoping Report** and **Plan of Study for EIA** will be released for public comment before submission to DEA.
- ❖ **Specialist studies** will be completed to inform the Environmental Impact Assessment Report.
- ❖ The **EIA Report** and the **Environmental Management Plan** will be released for public comment before submission to DEA.
- ❖ The DEA will then make their decision to grant or refuse **Environmental Authorisation**.
- ❖ Stakeholders will be informed of the DEA's decision and the opportunity to **appeal**.

NATIONAL NUCLEAR REGULATOR

- ❖ The NNR is a public entity established in terms of the National Nuclear Regulator Act 47 of 1999 to provide for the **protection** of persons, property and the environment **against nuclear damage** through the establishment of safety standards and regulatory practices.
- ❖ KNPS is licenced with the NNR but must amend their existing licence to include the TISF.
- ❖ The licence **amendment application** will be **submitted to the NNR** once Environmental Authorisation has been received.
- ❖ This application process will include a separate **stakeholder engagement** process.
- ❖ Eskom must undertake a radiological assessment to determine the potential radiological effects on the public to inform this application.

PROJECT ALTERNATIVES

- ❖ Eskom initially identified **6 potential location alternatives** at Koeberg for the TISF.
- ❖ The feasibility of the location alternatives was evaluated against key criteria, eliminating 4 potential sites.
- ❖ Two viable site locations for the TISF were identified within the existing KNPS Owner Controlled Area (OCA): **Alternative 1** (the preferred alternative) and **Alternative 2**.
- ❖ The **No Go Alternative** will also be considered in accordance with the EIA Regulations. This entails no change to the status quo, i.e. the TISF will not be built.



PROJECT DESCRIPTION

- ❖ The TISF is proposed to comprise of a **concrete pad** covering an area of approximately 12800m² onto which up to 160 dry storage casks can be placed.
- ❖ The TISF will be constructed on **vacant land** within the KNPS Owner Controlled Area and will be surrounded by a perimeter fence with **controlled access**.
- ❖ **Used fuel assemblies** will be loaded into casks at the reactor unit fuel buildings and **transferred to the TISF**.
- ❖ The loading and transferring of one dry storage cask to the TISF will take approximately 10 working days.

TISF comprising a concrete slab onto which dry storage casks can be placed, with a secure perimeter fence

Source: Maine Yankee



AFFECTED ENVIRONMENT

- ❖ The area is **relatively flat** with an active dunefield extending north of KNPS and a dominant ridgeline inland of the KNPS.
- ❖ There are **no** significant sources of **air pollution** or **noise** in the area.
- ❖ There are **no surface water features** in close proximity to KNPS.
- ❖ KNPS occurs on the **Strandveld Aquifer**, an important aquifer supplying water to the surrounding towns (e.g. Atlantis).
- ❖ KNPS is located within the **Cape Flats Dune Strandveld** vegetation type.
- ❖ Vegetation was historically disturbed during the construction of KNPS, but has re-established in the area.

Koeberg Nuclear Power Station with dunefields in the foreground



AFFECTED ENVIRONMENT

- ❖ The location of the site within KNPS largely precludes the existence of fauna, however, a **variety of bird species** are likely to inhabit the sites.
- ❖ A 5km Precautionary Action Planning Zone and 16km Urgent Protective Action Planning Zone have been delineated around KNPS, where development is restricted. The **population density** around KNPS is thus **low**.
- ❖ While the area is rich in heritage resources, the site alternatives are significantly **transformed** by previous construction activities.
- ❖ KNPS is a substantially **modified landscape** with high levels of visual impact caused by the reactor units and associated infrastructure.



View of KNPS from the conservation area with Table Mountain in the background

POTENTIAL ENVIRONMENTAL CONCERNS

- ❖ **Geohydrology:** potential impact on groundwater levels and the need for dewatering may exist, depending on the proposed excavation depth and depth of aquifer.
- ❖ **Terrestrial ecology:** due to the ecological sensitivity of both site alternatives and the presence of sensitive vegetation types, the project may negatively impact threatened and/or protected floral species.
- ❖ **Socio-economic:** potential negative impacts on the surrounding communities associated with noise and dust conditions during construction. Benefits of the TISF include ensuring the continued operation of the KNPS, a significant electricity producer in the Western Cape.



Cape Flats Dune Strandveld vegetation indigenous to the KNPS site, although the site has been disturbed by previous construction activities
Source: www.southsidewheelers.com; wikipedia.org

POTENTIAL ENVIRONMENTAL CONCERNS

- ❖ **Radiation and Human Health:** potential exposure of Eskom employees as well as surrounding communities to radiation due to the handling and storage of used fuel at the TISF and the potential negative impacts on human health.
- ❖ **Heritage:** due to previous disturbance of the site and heritage landscape, the possibility of finding sites of archaeological or palaeontological importance is highly unlikely.
- ❖ **Visual:** the TISF will be located in the KNPS OCA, a substantially modified landscape and is therefore unlikely to have significant negative visual impacts for receptors.



The landscape surrounding KNPS is highly modified by existing infrastructure.
Source: <http://www.vocfm.co.za/koeberg-tender-case-partly-withdrawn/>; www.melkbos.com

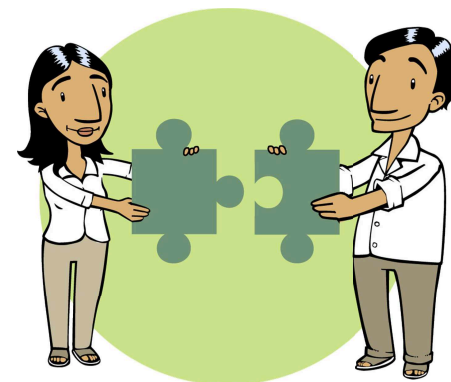
SPECIALIST STUDIES

- ❖ A number of **specialist studies** will be commissioned during the EIA Phase to assess the impacts of the TISF:
 - Geohydrology;
 - Terrestrial Ecology (vegetation & fauna);
 - Socio-economic;
 - Human Health;
 - Heritage; and
 - Visual.
- ❖ Less significant impacts will be assessed by SRK.
- ❖ A **Radiological Assessment** was commissioned by Eskom prior to the EIA process. An independent review of the Radiological Assessment will inform the EIA process.
- ❖ Eskom's existing **Emergency Response Plan** will be reviewed to ensure compliance with legislation and best practice.



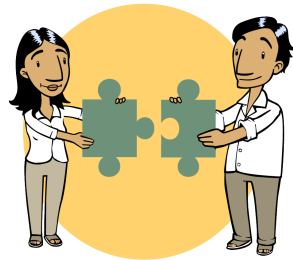
SPECIALIST STUDIES

- ❖ The generic Terms of Reference and principal objectives for each specialist study are to:
 - **Describe** the existing baseline characteristics of the study area and place this in a regional context;
 - **Identify and assess** potential impacts of the project (including the construction and operation phases), using SRK's prescribed impact rating methodology;
 - **Identify and describe** potential cumulative impacts in relation to proposed and existing developments in the surrounding area;
 - **Recommend mitigation** measures to minimise impacts and/or optimise benefits associated with the proposed project; and
 - Recommend and draft a **monitoring** campaign, if applicable.



PLAN OF STUDY FOR THE EIA

- ❖ **Specialists studies** will be done to provide detailed information regarding the affected environment and potential impacts of the project.
- ❖ **Key potential issues and impacts** will be investigated and assessed using standard impact rating methodology.
- ❖ **Mitigation / Optimisation measures** will be identified to prevent / minimise negative impacts and enhance benefits.
- ❖ **Environmental Impact Assessment Report (EIAR)** will be compiled, including the **Environmental Management Programme (EMPr)**.
- ❖ **Public consultation** will be conducted.
- ❖ **Final EIAR and EMPr** will be compiled and submitted to authorities to inform their decision.



PUBLIC PARTICIPATION

- ❖ Stakeholders will be given the opportunity to participate throughout the EIA process.
- ❖ The first opportunity to participate is during the BID release (currently).
- ❖ Stakeholders can provide comment on the BID for the TISF until **9 November 2015**.
- ❖ After the release of the Scoping Report, stakeholders will have **30 days** to provide comment.
- ❖ After the Scoping Report is accepted by the DEA, stakeholders will be given an opportunity to comment on the EIA Report and the EMP (**30 day** commenting period).
- ❖ Stakeholders will be informed of the DEA's final decision on the project.



WAY FORWARD

- ❖ The **Background Information Document** is available for viewing at:



- ❖ Koeberg Public Library, Duynfontein
- ❖ Wesfleur Public Library, Atlantis
- ❖ Cape Town Public Library
- ❖ KNPS Visitors' Centre
- ❖ SRK's Cape Town office; and
- ❖ SRK's website: www.srk.co.za

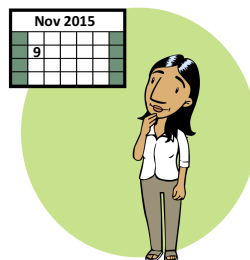
- ❖ Stakeholders are invited to submit comments and/or register on the project database. Submissions from stakeholders must include their name, contact details (preferred method of notification, e.g. e-mail) and an indication of any direct business, financial, personal or other interest which they have in the application, to the contact person below, by **9 November 2015**.

- ❖ Registered stakeholders will be notified of the availability of the Scoping Report for comment and of future meetings.

- ❖ All written comments can be addressed to **Jessica du Toit** at SRK Consulting:

SRK Consulting
Postnet Suite #206,
Private Bag X18,
Rondebosch 7701

Fax: 021 685 7105
Tel: 021 659 3060
email: jedutoit@srk.co.za



Koeberg Transient Interim Storage Facility - EIA Report
 Public Open Day – 15h00 -19h00, 27 October 2015, Koeberg Nuclear Power Station: Visitors Centre
 ATTENDANCE REGISTER



NAME	CAPACITY / ORGANISATION (if any)	POSTAL ADDRESS	CONTACT DETAILS
Lewis Phidza	ESKOM	PHIDZANL@ESKOM.CO.ZA	Tel/Cell 0720826867 Fax 01 E-mail PHIDZANL@ESKOM.CO.ZA
Ben Blom	Necsa	ben.blom@necsa.co.za	Tel/Cell 082 806 3831 Fax E-mail ben.blom@necsa.co.za
Israel Sekoto	ESKOM	sekotoI@eskom.co.za	Tel/Cell 011 894 1035 Fax 086 605 1915 E-mail sekotoI@eskom.co.za
Luka Potgieter	"	potgieterL@eskom.co.za	Tel/Cell Fax E-mail
Nikki Jonker	"	JONKERN@ESKOM.CO.ZA	Tel/Cell Fax E-mail
LINDLEY PERRYMAN	ESKOM	lindley.perryman@eskom.co.za	Tel/Cell 082 332 9213 Fax E-mail
Lynelle Matthys	CCT: Air Quality Management	246 Voortrekker Road Vasco	Tel/Cell 021 590 5200 Fax E-mail lynelle.matthys@capetown.gov.za
Kudie Kruger	ESKOM / DISASTER MANAGEMENT W/ECKSOS	13 SAMUEL COSE, OUYNEFONTEIN	Tel/Cell Fax E-mail krugerlk@eskom.co.za

Koeberg Transient Interim Storage Facility - EIA Report
 Public Open Day – 15h00 -19h00, 27 October 2015, Koeberg Nuclear Power Station: Visitors Centre
 ATTENDANCE REGISTER



NAME	CAPACITY / ORGANISATION (if any)	POSTAL ADDRESS	CONTACT DETAILS
Lewis Phidza	ESKOM	PHIDZANL@ESKOM.CO.ZA	Tel/Cell 072082 6867 Fax 01 E-mail PHIDZANL@ESKOM.CO.ZA
Ben Blom	Necsa	ben.blom@necsa.co.za	Tel/Cell 082 806 3831 Fax E-mail ben.blom@necsa.co.za
Israel Sekoto	ESKOM	sekotoI@eskom.co.za	Tel/Cell 011 894 1035 Fax 086 605 1915 E-mail sekotoI@eskom.co.za
Luka Potgieter	"	potgieterL@eskom.co.za	Tel/Cell Fax E-mail
Nikki Jonker	"	JONKERN@ESKOM.CO.ZA	Tel/Cell Fax E-mail
LINDLEY PERRYMAN	ESKOM	lindley.perryman@eskom.co.za	Tel/Cell 082 332 9213 Fax E-mail
Lynelle Matthys	CCT: Air Quality Management	246 Voortrekker Road Vaalco	Tel/Cell 021 590 5200 Fax E-mail lynelle.matthys@capetown.gov.za
KUDIE KRUGER	ESKOM / DISASTER MANAGEMENT W/ECKSOS	13 SAMUEL COSE, OUYNEFANKIWI	Tel/Cell Fax E-mail kruger1k@eskom.co.za

Koeberg Transient Interim Storage Facility - EIA Report
 Public Open Day – 15h00 -19h00, 27 October 2015, Koeberg Nuclear Power Station: Visitors Centre
 ATTENDANCE REGISTER



NAME	CAPACITY / ORGANISATION (if any)	POSTAL ADDRESS	CONTACT DETAILS
Nettie Fick	Project Management Eskom, KNPS	15 Battersea Bend Parklands 7441	Tel/Cell 0798874602
			Fax -
			E-mail ficker@eskom.co.za
Alan Lawrence.	Design Engineer	17 New Way Pindlands 7405	Tel/Cell 021 522 1186.
			Fax
			E-mail lawrencea@eskom.co.za.
Mark Vernon	Design Engineer	58A Queen Victoria Rd Claremont 7708	Tel/Cell 0721754461
			Fax
			E-mail vernonmr@eskom.co.za
Anita September	Nuclear Proj Management Eskom.	49 Montagu Street Atlantis 7349	Tel/Cell 0844089080
			Fax
			E-mail Septema@eskom.co.za.
Dean Jeannes	Eskom	Koeberg Power Station.	Tel/Cell 021 8977729
			Fax
			E-mail jeannesd@eskom.co.za
Sarkina Petersen	Eskom - Planner	11 Centaur Street Atlantis 7349	Tel/Cell 082 44 77 116
			Fax
			E-mail osankingsp@gmail.com
MAISE MATHOTHE	Eskom - PFE	PO Box 561 TELKOMSTRAND 7440	Tel/Cell 021 550 5039
			Fax
			E-mail telebohle.mathathe@eskom.co.za
TREVOR MOODLEY	Eskom - QC	KNPS	Tel/Cell 079797 0363
			Fax
			E-mail Trevor.Moodley@eskom.co.za

Koeberg Transient Interim Storage Facility - EIA Report
 Public Open Day – 15h00 -19h00, 27 October 2015, Koeberg Nuclear Power Station: Visitors Centre
 ATTENDANCE REGISTER



NAME	CAPACITY / ORGANISATION (if any)	POSTAL ADDRESS	CONTACT DETAILS
Nettie Fick	Project Management Eskom, KNPS	15 Battersea Bend Parklands 7441	Tel/Cell 0798874602
			Fax -
			E-mail ficker@eskom.co.za
Alan Lawrence.	Design Engineer	17 New Way Pineclands 7405	Tel/Cell 021 522 1186.
			Fax
			E-mail lawrencea@eskom.co.za.
Mark Vernon	Design Engineer	58A Queen Victoria Rd Claremont 7708	Tel/Cell 0721754461
			Fax
			E-mail vernonmr@eskom.co.za
Anita September	Nuclear Proj Management Eskom.	49 Montagu Street Atlantis 7349	Tel/Cell 0844089080
			Fax
			E-mail Septema@eskom.co.za.
Dean Jeannes	Eskom	Koeberg Power Station.	Tel/Cell 021 8977729
			Fax
			E-mail jeannesd@eskom.co.za
Sarkina Petersen	Eskom - Planner	11 Centaur Street Atlantis 7349	Tel/Cell 082 44 77 116
			Fax
			E-mail osankingsp@gmail.com
MAISE MAKHOTHE	Eskom - PFE	PO Box 561 TELKOMSTRAAT 7440	Tel/Cell 021 550 5039
			Fax
			E-mail telebohle.makhathe@eskom.co.za
TREVOR MOODLEY	ESKOM - QC	KNPS	Tel/Cell 079797 0363
			Fax
			E-mail Trevor.Moodley@eskom.co.za

Koeberg Transient Interim Storage Facility - EIA Report
 Public Open Day – 15h00 -19h00, 27 October 2015, Koeberg Nuclear Power Station: Visitors Centre
 ATTENDANCE REGISTER



NAME	CAPACITY / ORGANISATION (if any)	POSTAL ADDRESS	CONTACT DETAILS
R MAYMEW	PSIF	4 RAVENSWOOD ROAD PARKLANDS 7441	Tel/Cell 021 557 2752 Fax E-mail
J WILSON	"	18 ELPHINSTONK T'VIEW	Tel/Cell 072 436 4510 Fax E-mail
V XULIBANA	KOEBERG	KOEBERG	Tel/Cell 072 3035649 Fax E-mail Vuyx@hotmail.com
Mandisi Shwayi	Koeberg	14 IRONWOOD ROAD PARKLANDS, 7441	Tel/Cell 083 7252820 Fax N/A E-mail Mandisi.Shwayi@eskom.co.za
Jongi Dyabaza	Koeberg OCU	Koeberg	Tel/Cell 074 6691864 Fax 086 668 6573 E-mail Jongi.dyabaza@eskom.co.za
IAN NORMAN	RESIDENT	25 EDWARD CRESCENT DUYNESFONTEIN	Tel/Cell Fax E-mail
RENEE OVIS	KOU	PO BOX 20159 316 BAY 7448	Tel/Cell 083 26494 Fax 086615571 E-mail ovis@eskom.co.za
Michelle Herbert	Eskom: Environmental Managem.	Koeberg	Tel/Cell 082 308 8535 Fax 086 509 5755 E-mail michelle.herbert@advisian.com

Koeberg Transient Interim Storage Facility - EIA Report
 Public Open Day – 15h00 -19h00, 27 October 2015, Koeberg Nuclear Power Station: Visitors Centre
 ATTENDANCE REGISTER



NAME	CAPACITY / ORGANISATION (if any)	POSTAL ADDRESS	CONTACT DETAILS
R MAYMEW	PSIF	4 RAVENSWOOD ROAD PARKLANDS 7441	Tel/Cell 021 557 2752 Fax E-mail
J WILSON	"	18 ELPHINSTONK T'VIEW	Tel/Cell 072 476 4510 Fax E-mail
V XULIBANA	KOEBERG	KOEBERG	Tel/Cell 072 3035649 Fax E-mail Vuyx@hotmail.com
Mandisi Shwayi	Koeberg	14 IRONWOOD ROAD Parklands, 7441	Tel/Cell 083 7252820 Fax N/A E-mail Mandisi.Shwayi@eskom.co.za
Jongi Dyabaza	Koeberg OCU	Koeberg	Tel/Cell 074 6691864 Fax 086 668 6573 E-mail Jongiodyabaza@eskom.co.za
IAN NORMAN	RESIDENT	25 EDWARD CRESCENT DUYNESFONTEIN	Tel/Cell Fax E-mail
RENEE OVIS	KOU	PO BOX 20159 316 BAY 7448	Tel/Cell 083 026994 Fax 0866615571 E-mail ovisr@eskom.co.za
Michelle Herbert	Eskom: Environmental Managem.	Koeberg	Tel/Cell 082 308 8535 Fax 086 509 5755 E-mail michelle.herbert@advisian.com

Koeberg Transient Interim Storage Facility - EIA Report
 Public Open Day – 15h00 -19h00, 27 October 2015, Koeberg Nuclear Power Station: Visitors Centre
ATTENDANCE REGISTER



NAME	CAPACITY / ORGANISATION (if any)	POSTAL ADDRESS	CONTACT DETAILS
G. KRBUCKLE, Graham.	/	PO BOX 382 MELKBOSSTRAND.	Tel/Cell 082 - 8446858 Fax / E-mail grahamakruckle@gmail.com
R. JAVAS Ryan	Private	West Beach	Tel/Cell 082 257 2637. Fax . E-mail ryan@seksa.co.za
A. Jones Jones	Self - Private	9 Edward Crescent Melkbosstrand 7441	Tel/Cell 021-5534178 Fax E-mail antandjsh@gmail.com
C. Tebbelohu	Eskom - NPM	10 Rochester Rd. West Beach 7441	Tel/Cell 0729900081 Fax E-mail
N Foster	Eskom - NE	10 Watsonia Crescent Big Bay	Tel/Cell 083-454 9456 Fax E-mail
			Tel/Cell Fax E-mail
			Tel/Cell Fax E-mail
			Tel/Cell Fax E-mail

Koeberg Transient Interim Storage Facility - EIA Report
 Public Open Day – 15h00 -19h00, 27 October 2015, Koeberg Nuclear Power Station: Visitors Centre
 ATTENDANCE REGISTER



NAME	CAPACITY / ORGANISATION (if any)	POSTAL ADDRESS	CONTACT DETAILS
Ian Geldenhuys	City of Cape Town Head Specialised Env. Health	P.O. Box 2815 CAPE TOWN 8000	Tel/Cell 084 2200139
			Fax
			E-mail ian.geldenhuys@capetown.gov.za
TAYEB JAPPIE	PROJECT DIRECTOR ESKOM	KOEBERG	Tel/Cell x/4655
			Fax
			E-mail
HARREN SATAAR	PROJECT MANAGER ESKOM	KOEBERG	Tel/Cell x2532
			Fax
			E-mail
STEPHEN PIETERSEN	RP ENGINEER ESKOM	KOEBERG	Tel/Cell
			Fax
			E-mail Stephen.Pietersen@eskom.co.za
RANDALL LAVELOTT	PROJECT MANAGER ESKOM	KOEBERG	Tel/Cell x3078
			Fax
			E-mail
Riedwaan Bakardien	ESKOM Koeberg - PSM Power Station Manager.	KOEBERG	Tel/Cell
			Fax
			E-mail Riedwaan.bakardien@eskom.co.za
FELIX MATTHEE	CHEMIST FELIX.MATTHEE@ESKOM.CO.ZA.	KNPS	Tel/Cell
			Fax
			E-mail
John Jones	Engineer john.jones@eskom.co.za	KNPS	Tel/Cell
			Fax
			E-mail