

# APPENDIX A

## SITE PLANS

*Appendix A1: Locality Maps*

*Appendix A2: Layout/Zoning Maps*

*Appendix A3: Sensitivity Map*

*Appendix A4: Positions of Photographs*

*Appendix A5: Site Plan*

# APPENDIX A1

## LOCALITY MAPS



### Kriel-Matla Ash Transfer Link

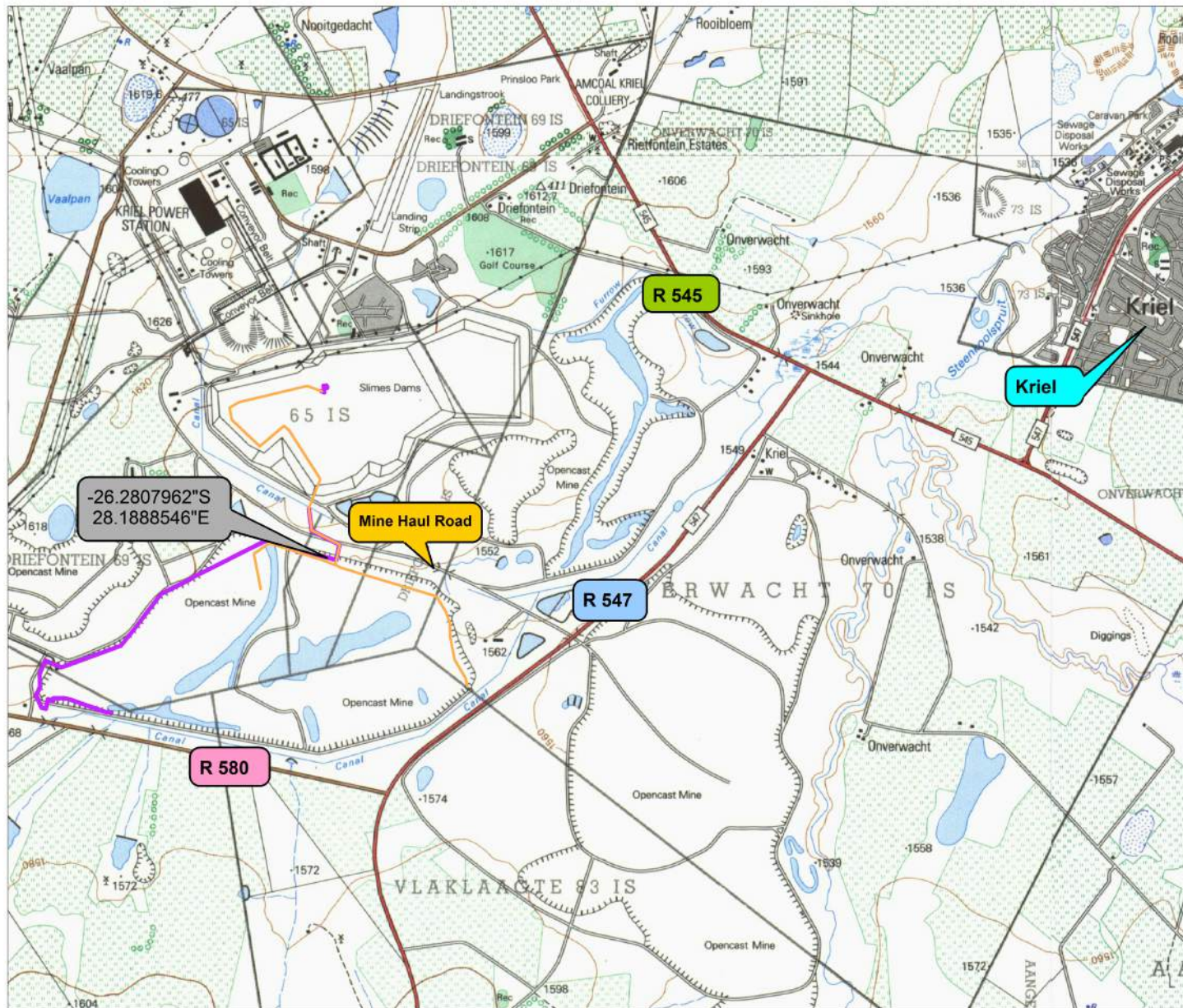
Locality Map

#### Legend

- 1:50 000 Rasta
- Ash Water Return
- Pipeline Alternative Route 1
- Slurry Transfer
- Pipeline Alternative Route 1



Scale 1:45000



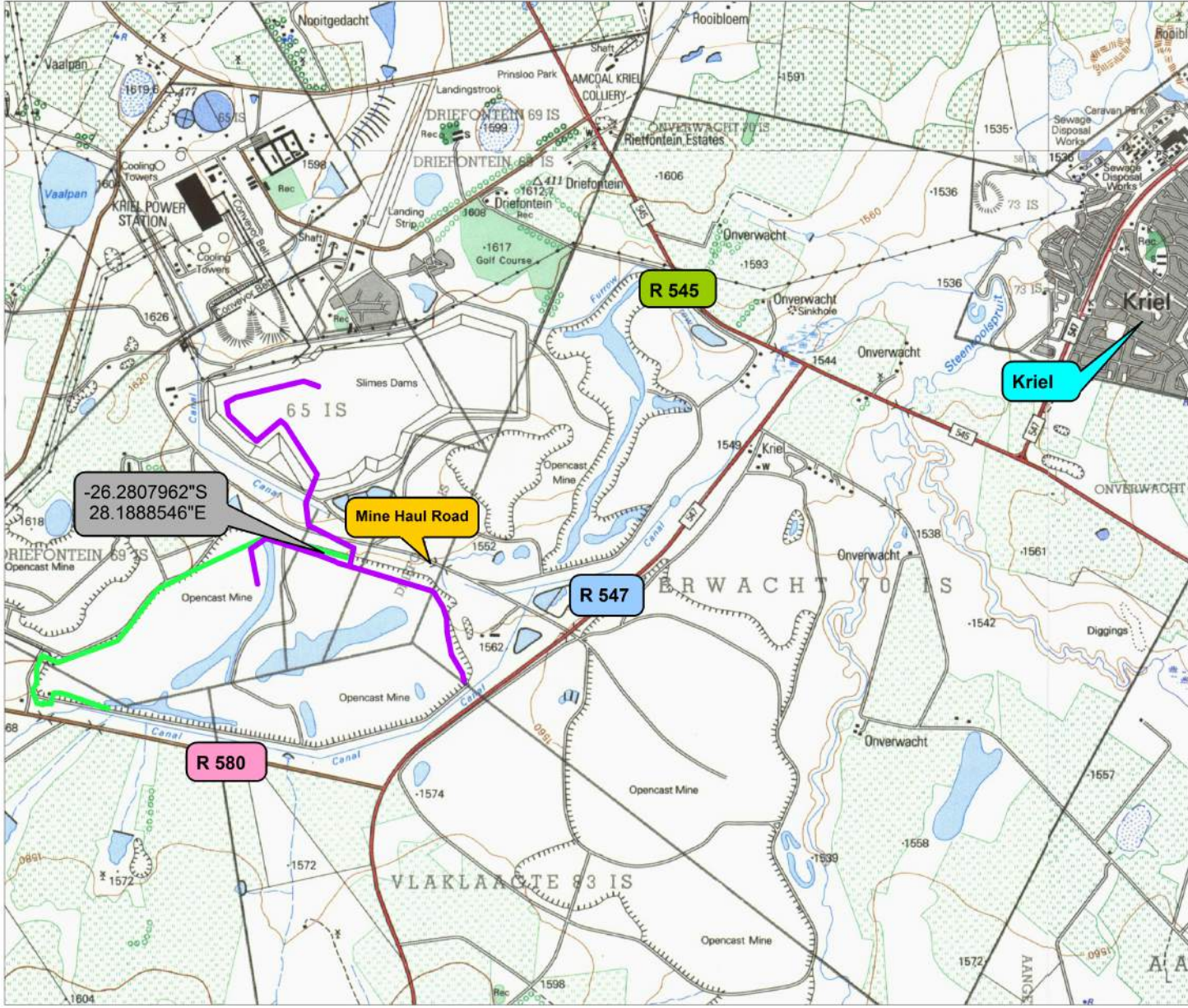
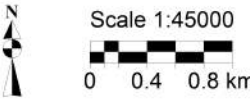


### Kriel-Matla Ash Transfer Link

### Locality Map

### Legend

- 1:50 000 Rasta
- Ash Water Return
- Pipeline Alternative Route 2
- Slurry Transfer
- Pipeline Alternative Route 2



# APPENDIX A2

## LAYOUT AND ZONING MAPS

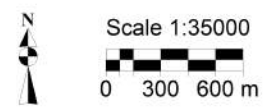
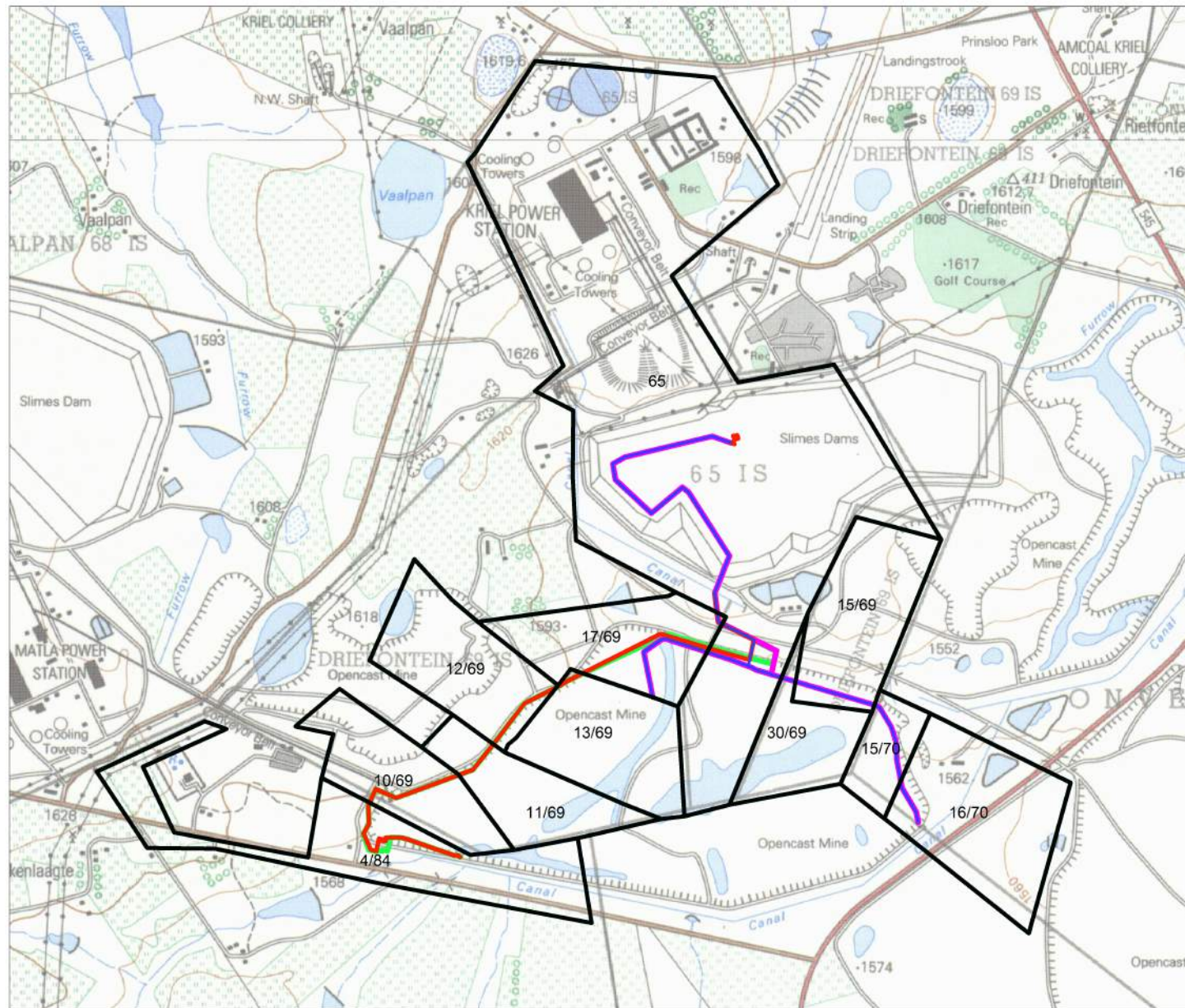


### Kriel-Matla Ash Transfer Link

### Land Portions

#### Legend

- 1:50 000 Rasta
- Ash Water Return Pipeline Alternative Route 2
- Slurry Transfer Pipeline Alternative Route 2
- Ash Water Return Pipeline Alternative Route 1
- Slurry Transfer Pipeline Alternative Route 1
- Farm Portions Within 50m of Proposed Project





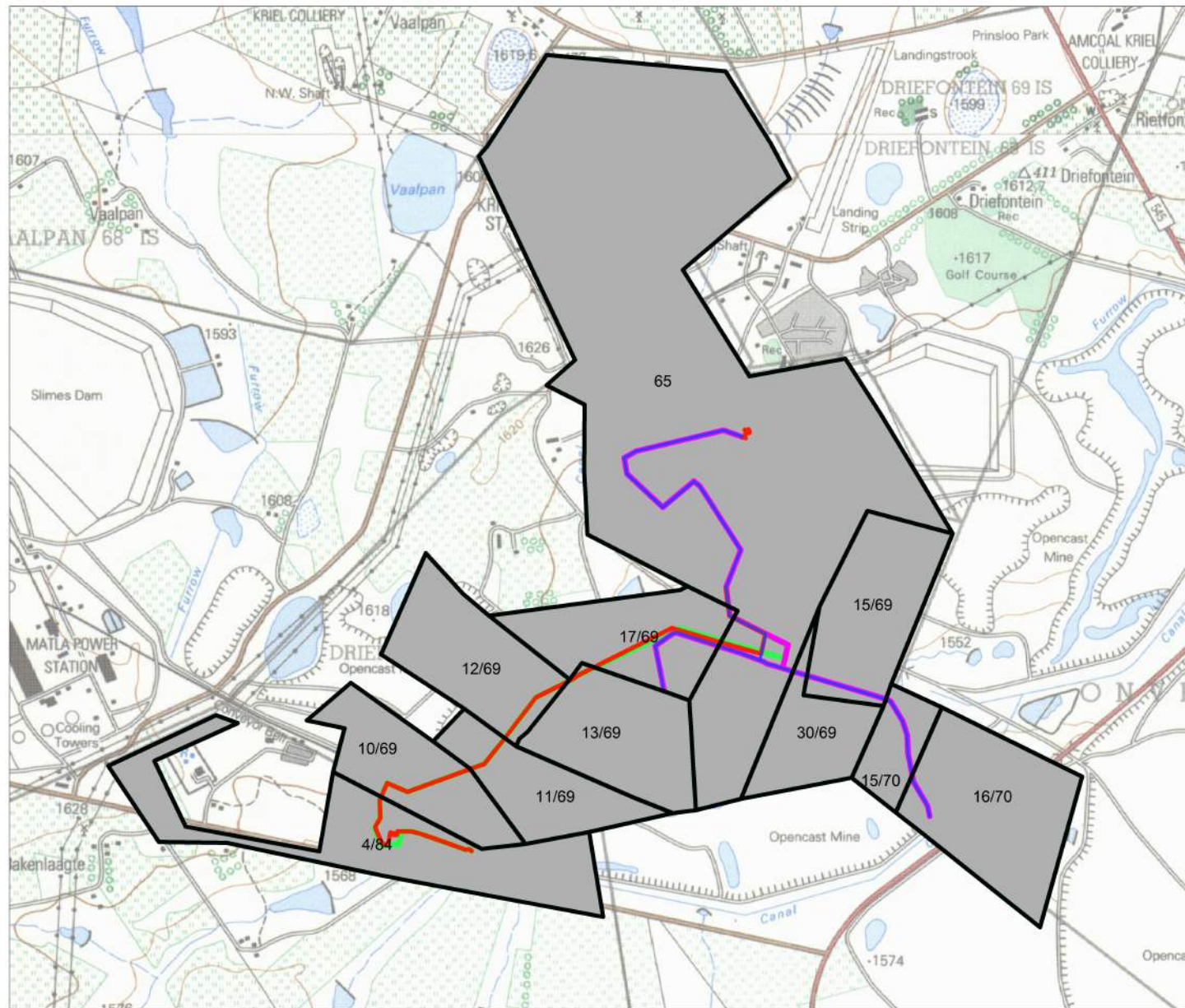


### Kriel-Matla Ash Transfer Link

#### Land Use

#### Legend

- 1:50 000 Rasta
- Ash Water Return Pipeline Alternative Route 2
- Slurry Transfer Pipeline Alternative Route 2
- Ash Water Return Pipeline Alternative Route 1
- Slurry Transfer Pipeline Alternative Route 1
- Power Station Related Activities
- Farm Portions Within 50m





# APPENDIX A3

## SENSITIVITY MAP



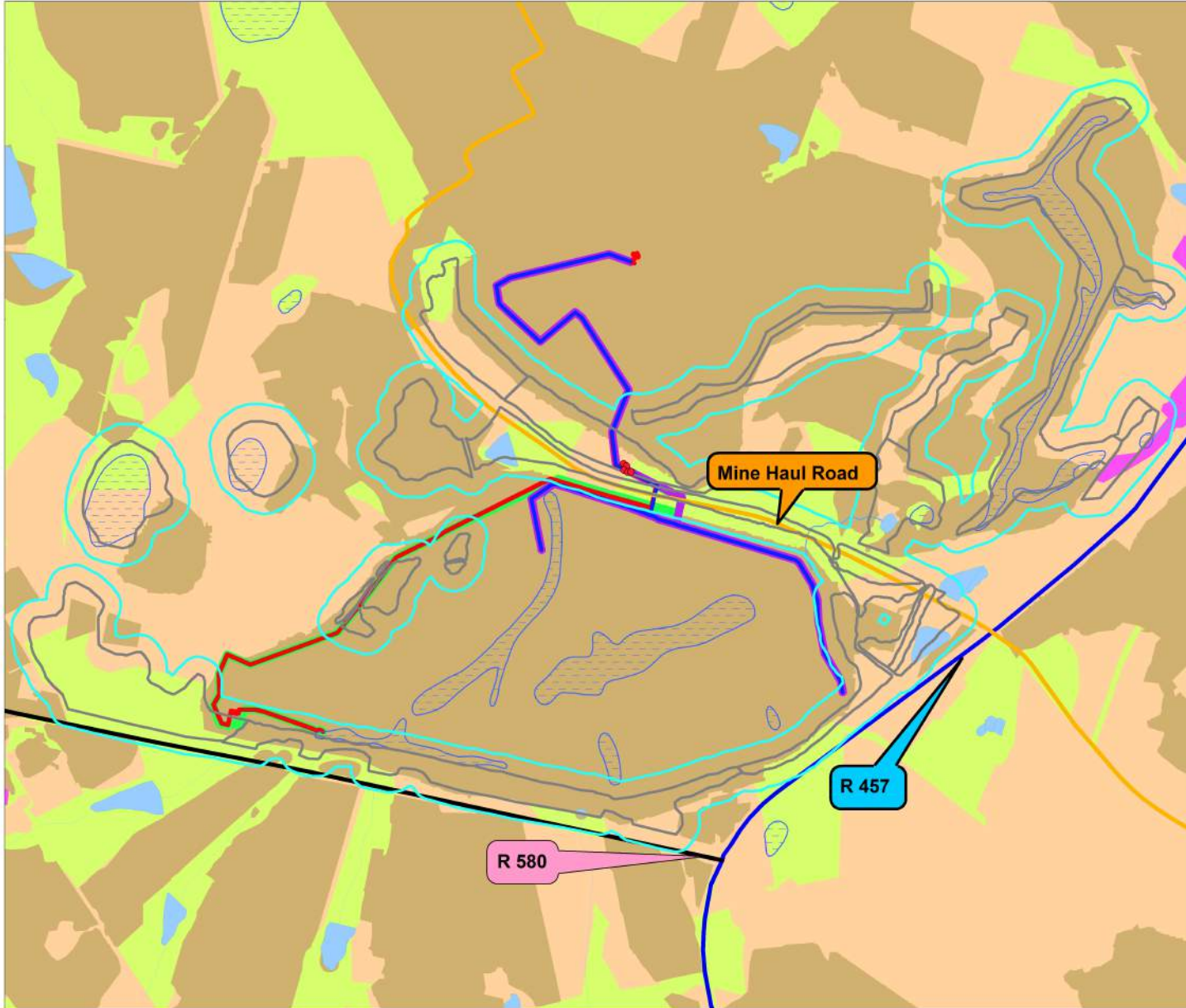
## Matla-Kriel Ash Transfer Link

### Sensitivity Map

- Legend**
- Proposed Development**
- Ash Water Return Pipeline Alternative Route 2
  - Slurry Transfer Pipeline Alternative Route 2
  - Ash Water Return Pipeline Alternative Route 1
  - Slurry Transfer Pipeline Alternative Route 1
- Vegetation**
- Star flower/African potato
- MBSP Terrestrial**
- CBA Optimal
  - Heavily modified
  - Moderately modified- Old lands
  - Other Natural Areas
- Inland water**
- Dam
  - Perennial pan
- River**
- Non-perennial extent
  - Perennial extent
  - Non-perennial center line (lines)
  - Perennial center line
- Roads**
- Main Road
  - Mine Haul Road
  - Secondary road
- Wetland**
- 100m\_Buffer\_Wetland\_Delineation
  - Wetland\_Delineation



Scale 1:31000  
0 300 600 m



# APPENDIX A4

## POSITION OF PHOTOGRAPHS



# APPENDIX A5

## SITE PLAN MAP



### Kriel-Matla Ash Transfer Link

#### Site Plan

##### Legend

- Ash Water Return Pipeline Alternative Route 2
  - Slurry Transfer Pipeline Alternative Route 2
  - Ash Water Return Pipeline Alternative Route 1
  - Slurry Transfer Pipeline Alternative Route 1
- Inland water
- Dam
  - Perennial pan
- River
- Non-perennial extent
  - Perennial extent
  - Non-perennial center line (lines)
  - Perennial center line
- Roads
- Main Road
  - Secondary Road
  - Mine Haul Road
- Land Use
- High urban density



Scale 1:35000  
0 300 600 m

