

10 August 2012

Dear Stakeholder

Environmental Impact Assessment and Waste Management License Application for the proposed extension of the ash disposal facility at Kusile Power Station

DEA Reference Number: 12/12/20/2412, NEAS Reference: DEA/EIA/0000514/2011

FINAL SCOPING REPORT AVAILABLE FOR YOUR REVIEW

An Environmental Impact Assessment (EIA) and Waste Management License Application (WMLA) are being undertaken for the proposed extension of the ash disposal facility and associated infrastructure at Kusile Power Station between Bronkhorstspuit and Emalaheni in Mpumalanga.

The electricity generating process at Kusile power station will produce ash which has to be disposed of in an environmentally responsible manner. Kusile power station currently has environmental authorisation for an ash disposal facility on the terrain of the power station. This ash disposal facility has been deemed to be inadequate to service the life of the station; hence another ash disposal facility is required for the next 60 years of station operations. Potential sites within a 15 km radius of the Kusile power station are being investigated in this study. It is anticipated that the proposed new ash disposal facility will have an estimated footprint of between 1 200 and 1 500 hectares (12 or 15 km²). Associated infrastructure components may consist of:

- A conveyor belt for the transportation of waste to the ash disposal site;
- Pollution control dams and water return channels;
- Services including electricity and water supply in the form of power lines, pipelines, and associated infrastructure; and
- Access and maintenance roads to the ash disposal facility.

The ash produced over the 60 year lifespan of the power station is estimated at approximately 460 million m³ and the proposed ash disposal facility will be around 40 to 60 m high at the end of its lifespan.

Availability of Final Scoping Report for public review from 13 August 2012 to 25 September 2012

In accordance with the EIA Regulations, the Final Scoping Report will be submitted to the competent authority for the EIA and the WMLA, namely the national Department of Environment Affairs (DEA). Parallel to this submission, it will be made available for review by the public, relevant organs of state and other government departments for a 40 calendar day period. The public review period will be from **13 August 2012 to 25 September 2012**.

The report will be available for review from **13 August 2012** at the following locations:

Contact	Location	Contact
Printed Copies		
Agnes Mabena	Phola Public Library	Tel: 013 645 0094
Ntombi Jela	Ogies Public Library, 61 Main Street, Ogies	Tel: 013 643 1150
Grace Kotlolo	Kungwini Public Library	Tel: 013 932 6305
Evette van der Vlies	Kusile office at the Eskom Wilge offices	Tel: 013 693 4847
Electronic Copies		
Tobile Bokwe	www.eskom.co.za/c/44/environmental-impact-assessments	Tel: 011 800 2303
Andre Joubert	www.zitholele.co.za/kusile-ash	Tel: 011 207 2077
Andre Joubert or Patiswa Mnqokoyi	Available on CD on request via email from Zitholele Consulting.	Phone 011 207 2077/4, or send email request to andrej@zitholele.co.za , or complete the enclosed form.

You are requested to comment on the FSR in any of the following ways:

- Completing the comment sheet enclosed;
- Writing a letter, or producing additional written submissions;
- Sending an email or phoning the public participation office; or

Kindly send your reply to Andre Joubert or Florence Rambuda at the Public Participation Office on fax number 086-676-9950 or e-mail to andrej@zitholele.co.za / florencer@zitholele.co.za. You are also welcome to contact Zitholele Consulting on (011) 207-2077 or (011) 207- 2075.

This assessment is being conducted on behalf of Eskom.

Yours sincerely



Andre Joubert
Public Participation Office



environmental affairs

Department:
Environmental Affairs
REPUBLIC OF SOUTH AFRICA

Private Bag X 447 · PRETORIA · 0001 · Fedsure Building · 315 Pretorius Street · PRETORIA
Tel (+ 27 12) 310 3911 · Fax (+ 2712) 322 2682

NEAS Reference: DEA/EIA/0001448/2012

DEA Reference: 12/12/20/2412

Enquiries: Masina Litsoane

Telephone: 012-395-1778 **Fax:** 012-320-7539 **E-mail:** MLitsoane@environment.gov.za

Mr. Willem Howell
Zitholele Consulting (Pty) Ltd
P.O. Box 6002
HALFWAY HOUSE
1685

Fax No: 086-674-6121

PER FACSIMILE / MAIL

Dear Mr Howell

APPLICATION FOR ENVIRONMENTAL AUTHORISATION: PROPOSED EXTENSION OF THE ASH DISPOSAL FACILITY AT KUSILE POWER STATION MPUMALANGA PROVINCE

The Final Scoping Report (FSR) and Plan of Study for Environmental Impact Assessment dated August 2012 and received by the Department on 14 August 2012 refers.

The Department has evaluated the submitted FSR and the Plan of Study for Environmental Impact Assessment dated August 2012 and is satisfied that the documents comply with the minimum requirements of the Environmental Impact Assessment (EIA) Regulations, 2010. The FSR is hereby accepted by the Department in terms of regulation 30(1)(a) of the EIA Regulations, 2010.

You may proceed with the environmental impact assessment process in accordance with the tasks contemplated in the Plan of Study for Environmental Impact Assessment as required in terms of the EIA Regulations, 2010.

Please ensure that comments from all relevant stakeholders are submitted to the Department with the Final Environmental Impact Report (EIR). This includes but is not limited to Mpumalanga: Department of Economic Development Environment and Tourism, Department of Environmental Affairs, SAHRA, WESSA and any other stakeholders which deal with environmental matters within the province. Proof of correspondence with the various stakeholders must be included in the Final EIR. Should you be unable to obtain comments, proof should be submitted to the Department of the attempts that were made to obtain comments.

In addition, the following amendments and additional information are required for the EIR:

- a) Details of the future plans for the site and infrastructure after decommissioning in 20-30 years and the possibility of upgrading the proposed infrastructure to more advanced technologies.
- b) The total footprint of the proposed development should be indicated. Exact locations of the disposal facility extension, and associated infrastructure should be mapped at an appropriate scale.

- c) Should a Water Use License be required, proof of application for a license needs to be submitted.
- d) Possible impacts and effects of the development on the vegetation ecology with regard to lowland-highland interface in the locality should be indicated.
- e) The impacts of the proposed facility on avifauna and bats must be assessed in the EIA phase.
- f) Possible impacts and effects of the development on the surrounding industrial area.
- g) The EIR should include information on the following:
 - Environmental costs vs. benefits of the disposal facility activity; and
 - Economic viability of the facility to the surrounding area and how the local community will benefit.
- h) Information on services required on the site, e.g. sewage, refuse removal, water and electricity. Who will supply these services and has an agreement and confirmation of capacity been obtained?
- i) A construction and operational phase EMP to include mitigation and monitoring measures.
- j) Should blasting be required, appropriate mitigation measures should be provided.
- k) It must be made clear whether the new storm water management infrastructure is to be constructed or the existing one is to be expanded.
- l) **Amended application form** as the activities applied in the Application Form do not reflect the activities listed in the Scoping Report.

The applicant is hereby reminded to comply with the requirements of regulation 67 with regard to the time period allowed for complying with the requirements of the Regulations, and regulations 56 and 57 with regard to the allowance of a comment period for interested and affected parties on all reports submitted to the competent authority for decision-making. The reports referred to are listed in regulation 56(3a-3h).

Please ensure that the Final EIR includes at least one A3 regional map of the area and the locality maps included in the final EIR illustrate the proposed extension of disposal facility and its associated infrastructure. The maps must be of acceptable quality and as a minimum, have the following attributes:

- Maps are relatable to one another;
- Cardinal points;
- Co-ordinates;
- Legible legends;
- Indicate alternatives;
- Latest land cover;
- Vegetation types of the study area; and
- A3 size locality map.

Further, it must be reiterated that, should an application for Environmental Authorisation be subject to the provisions of Chapter II, Section 38 of the National Heritage Resources Act, Act 25 of 1999, then this Department will not be able to make nor issue a decision in terms of your application for Environmental Authorisation pending a letter from the pertinent heritage authority categorically stating that the application fulfils the requirements of the relevant heritage resources authority as described in Chapter II, Section 38(8) of the National Heritage Resources Act, Act 25 of 1999.

You are requested to submit five (5) copies of the Environmental Impact Report (EIR) to the Department as per regulation 34(1)(b) of the EIA Regulations, 2010. Please submit at least one electronic copy (CD/DVD) of the complete final report with the hard copy documents.

You are hereby reminded of Section 24F of the National Environmental Management Act, Act No 107 of 1998, as amended, that no activity may commence prior to an environmental authorisation being granted by the Department.

Yours sincerely



Mr Mark Gordon
Chief Director: Integrated Environmental Authorisations
Department of Environmental Affairs
Letter signed by: Ms Fatima Rawjee
Designation: Acting Director: Integrated Environmental Authorisations
Date: 08/10/2022

CC:	Mr. J. Prinsloo	Eskom	Fax: 086-652-0762
	Ms. I. Botha	Kungwini Local Municipality	Fax: 013-932-4091

Zitholele Consulting

Reg. No. 2000/000392/07

PO Box 6002 Halfway House 1685
South Africa
Thandanani Park, Matuka Close
Halfway Gardens, Midrand
Tel + (27) 11 207 2060
Fax + (27) 86 674 6121
E-mail : mail@zitholele.co.za



Our Ref : 12712

13 December 2013

Dear Stakeholder

EIA Newsletter: Environmental Impact Assessment and Waste Management License Application for the proposed Extension for the Ash Disposal Facility at Kusile Power Station

Please find attached, for your attention, the following documents:

- EIA Newsletter
- EIA Newsletter Comment Form
- EIA Locality Map
- List of potentially affected properties

We are looking forward to receiving your comments.

(Afrikaanse weergawe van korrespondensie sal binnekort versprei word)

Yours faithfully

A handwritten signature in black ink, appearing to read 'Nicolene Venter', is written over a light blue, textured background.

Nicolene Venter
ZITHOLELE CONSULTING (PTY) LTD

011 207 2060

nicolenev@zitholele.co.za

Z:\PROJECTS\12712 - EIA for Kusile Ash dump\Public Participation\3. Impact Phase\01. EIA Newsletter\Cover Letter\12712-Let-EIA Newsletter-20131214.docx

Environmental Impact Assessment and Waste Management License Application for the proposed Extension for the Ash Disposal Facility at Kusile Power Station



(DEA Ref: 12/12/20/2412; NEAS Ref: DEA/EIA/0000514/2011)

EIA NEWSLETTER – DECEMBER 2013

PURPOSE OF THIS EIA NEWSLETTER

The Kusile 60 year ash disposal facility (ADF) EIA commenced in 2011 with the announcement of the project. Since its inception the project has proven to be increasingly complex with numerous environmental, socio-economic and technical aspects to consider. Due to the complexity of the EIA extensive authority consultation, especially with the Department of Water Affairs (DWA), was undertaken, which extended the site selection and assessment process that was followed beyond its anticipated project schedule.

This EIA Newsletter aims to provide you with an update with regards to the EIA process, including tasks and public consultation still to be undertaken.

BACKGROUND

Zitholele Consulting (Pty) Ltd (hereafter 'Zitholele Consulting') was appointed by Eskom to undertake the Integrated Waste and Environmental authorisation process for the 60 year ash disposal facility at the Kusile Power Station. Kusile Power Station is a coal-fired power station which Eskom is presently constructing between Bronkhorstspuit and eMalahleni in Mpumalanga as part of the expansion of its power generation fleet.

Kusile Power Station currently has environmental authorisation for a co-disposal facility that can accommodate 10 year of ash and gypsum deposition.

Once ash deposition on the 60 year ash disposal commences, the 10 year co-disposal facility will receive the gypsum waste stream only. The facility was authorised as part of the Record of Decision (RoD) issued in 2008 by the then Department of Environmental Affairs and Tourism (DEAT) for the power station development. Due to this inadequacy, when considering the power station operations for the next 60 years, an additional larger ash disposal facility is required to accommodate the bulk of the ash generated by the power station.

PROJECT DESCRIPTION

The burning of coal in the Kusile Power Station, once operational, will produce ash that will have to be disposed of in an environmentally safe and sustainable manner. While Eskom is trying to encourage and increase ash utilisation, there is a risk that such utilisation will not result in significant consumption of such ash. The only viable option to deal with this extra waste stream is to dispose on an ash disposal facility (ADF) specifically engineered to house the ash produced over a period of 60 years, taking into consideration the current coal quality that will be supplied to Kusile Power Station.

It is envisaged that the project will include the following components at present:

- A lined dry ash disposal facility of estimated maximum footprint size of 1500 ha
- Associated infrastructure such as stackers, ash water return dams, pipelines and conveyors;
- A conveyor belt for the transportation of ash to the ADF;
- The waste stream comprising of a combined bottom ash and fly ash waste stream;
- Services including electricity and water supply in the form of power lines, pipelines, and associated infrastructure; and
- Access and maintenance roads to the site.

During the conceptual engineering design the concept models for the different site alternatives were optimised, as much as possible, to minimise the footprint of the ADF by increasing the stack height. The ADF height was however limited by the characteristics of the underlying geology.

Conveyors will be used to transport the ash from the power station to the newly proposed ash facility. It is envisaged that a two-stacker system will be used to place the ash from the conveyor belt system onto the ADF.

WHERE ARE WE IN THE EIA

Public consultation on the Draft Scoping Report (DSR) was undertaken in February and March 2012. The Final Scoping Report (FSR) and its accompanying documents were submitted to the DEA on Tuesday, 14 August 2012 for acceptance of the Final Scoping Report (FSR) and approval of the Plan of Study (PoS) for the EIA. Acceptance of the FSR and approval of the PoS was received from DEA on 8 October 2012. The FSR is available on Zitholele’s website (www.zitholele.co.za) and on Eskom’s website (www.eskom.co.za/eia). It is important to note that the PPP continued throughout the EIA. Should you want a copy of the DEA acceptance letter for the FSR and PoS, please send us your request, in writing, by e-mail, fax or letter (contact details below).

Zitholele Consulting is currently in the Environmental Impact Report Phase of the project (Figure 1) and aims

to finalise the Draft Environmental Impact Report (DEIR) and Draft Environmental Management Programme (DEMP_r) in January 2014. You, as a Stakeholder, will be notified of the availability of these two draft documents for public review and comment.

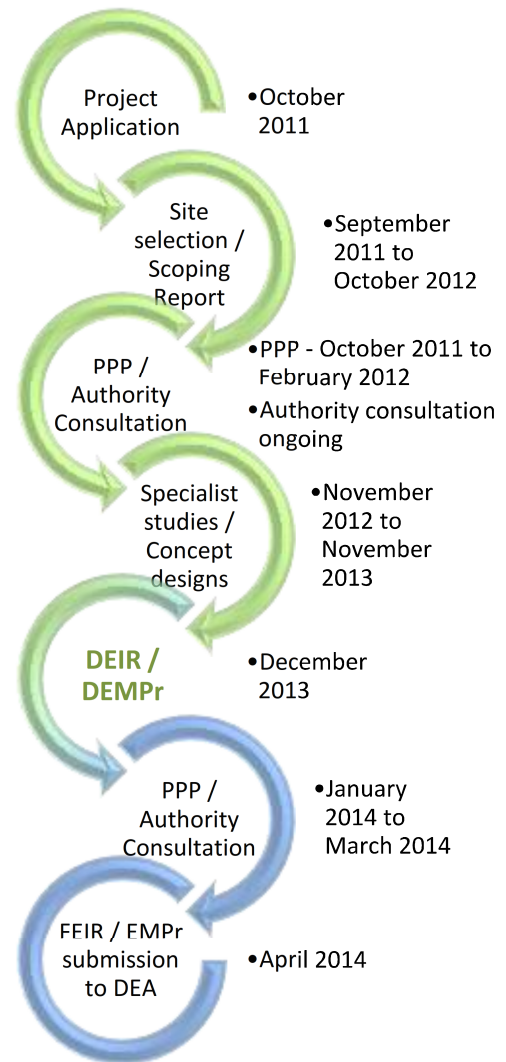


Figure 1: EIA process flow chart.

CONSIDERATION OF ALTERNATIVES

Five (5) feasible site alternatives were identified during the site selection and scoping phase of the project. These sites include Sites A, B, C, F and G. It was further identified that some of the sites were not large enough to receive the entire 60 years of ash deposition. Subsequently six (6) disposal scenarios and were

identified and taken forward into the EIR phase. The environmentally feasible disposal scenario's that were identified and investigated in the EIR phase include the following:

1. Site A
2. Site B
3. Site C
4. Site F and small A (reduced footprint of A)
5. Site G and small A (reduced footprint of A)
6. Site F and G combined

Conceptual engineering design and specialist impact assessments were undertaken for the six (6) disposal scenarios (refer to locality map).

A list of properties potentially affected by this proposed project, and specifically the site alternatives mentioned above, is attached. The property list, categorized per site, provides the farm name, number and portion number.

SPECIALIST STUDIES

The following specialist studies were commissioned by Zitholele Consulting based on the potential impacts identified during the Scoping Phase, comments received during public and authority consultation, and specific requirements stipulated by the permitting authorities (DEA and DWA):

- Ash Classification Assessment;
- Conceptual Engineering Design, Operational Plan and Topographical Survey;
- Geotechnical Assessment;
- Terrestrial Ecology Assessment (Fauna and Flora);
- Avifauna Assessment;
- Heritage Impact Assessment;
- Social Impact Assessment;
- Surface Water Assessment and Wetland Delineation;
- Aquatic Ecology Assessment
- Ground Water Assessment;
- Traffic Impact Assessment;

- Air Quality Opinion;
- Noise Impact Assessment;
- Soils and Land Capability Assessment;
- Visual Impact Assessment; and
- Sustainability Assessment.

These specialist studies have been completed and will be available to I&APs to peruse during the next public review period, which is scheduled to start in January 2014.

DEIR AND EMPr

The DEIR will include details of the public participation process conducted, a detailed description of the proposed development, assessment of the feasible alternatives and detailed concept designs. The DEIR will also include mitigation measures, detailed impact assessment of all impacts identified, detailed specialist investigations, and detailed environmental impact statements. The DEIR will comply with the requirements of National Environmental Management Act, as amended, the EIA regulations (GNR 543 – 546) of 2010.

The DEMPr will detail mitigation and management measures to be undertaken during the construction and operational phase of the ADF. Mitigation and management measures will address potentially significant impacts associated with activities during any of the project phases in order to protect the environment (biophysical as well as social) from harm.

The DEIR and DEMPr will be made available to I&APs for review and comments from January to March 2014. The availability of the DEIR and DEMPr as well as the Public Meeting date will be advertised in the various newspapers, and media, used during the Scoping Phase. After this public and authority review period these documents will be updated, where applicable, with information received from stakeholders. The FEIR and EMPr will be submitted to the public for final review and comment and to DEA for decision-making.

Environmental compliance monitoring will be implemented during the construction and operational phase to ensure compliance with the stipulations of the

FEIR, EMPr and the conditions as stipulated in the Waste Management Licence issued by the DEA.

PUBLIC PARTICIPATION PROCESS

We would like to make use of this opportunity to provide Stakeholders with a brief summary of the Public Participation Process (PPP) undertaken during the Scoping Phase, and the key activities during this phase were:

- Advertisements placed between 7 and 14 October 2011 in the newspapers – *Beeld, Corridor Gazette, Die Springs Advertiser, Echo, Ekasi News, Mpumalanga News, Ridge Times News, Streeknuus, The Herald* and *Witbank Nuus* - to announce the opportunity to participate.
- Meetings with authorities to agree on process and study requirements;
- Initial public and landowner notification, which included placing of site notices, the distribution the Background Information Documents (BID) and an invitation to contribute to the EIA process to I&APs in the project area and beyond;
- Distributed and announced the availability of the DSR and Comment and Responses Report (CRR);
- Convened a stakeholder meeting in the project area to obtain comments on the DSR;
- Updated and submitted FSR and the Plan of Study for the EIA to the DEA; and
- Distributed FSR and collate comments before submission to DEA.

Public Participation and authority consultation for comment on the DEIR is scheduled to commence in January 2014 through to March 2014. Notifications of key Public Participation activities i.e. Public Meeting, and availability of the DEIR and DEMPr for review and comment will be undertaken through email notifications to all registered Interested and Affected Parties (I&APs). Those I&APs that do not have emails will be notified via fax or mail, depending on the contact details provided by the I&APs. The DEIR and DEMPr will be placed in the same public venues as was done during the Scoping Phase. Registered I&APs can submit a written request for an electronic copy (CD) of these draft and final documents.

CONTINUED PUBLIC INVOLVEMENT

Public involvement is one of the cornerstones of effective environmental assessments as it is your comments that add value to an integrated and sustainable environmental process. It is also a consultation process leading to a joint effort by stakeholders, technical specialists, the authorities and the applicant – working together to produce better decisions. We therefore, once again, request your active participation in this phase of the EIA.

WAY FORWARD

Please note that public participation is a continuous communication and consultation process. You will thus be informed through personal correspondence and advertisements of the various remaining stages of this EIA, including the appeal procedures to follow once a decision by the competent authority (DEA) has been reached.

Should you, during this impact assessment phase, require any additional information or wish to submit comments on the specialist studies or the proposed Ash Disposal Facility project, you are welcome to forward your inputs, in writing or by completing the Comment Form included with this EIA Newsletter, to the Public Participation Office given below.

We look forward to your contributions and continued involvement!

COMMENTS AND QUERIES

Nicolene Venter

PO Box 6002

Halfway House, 1685

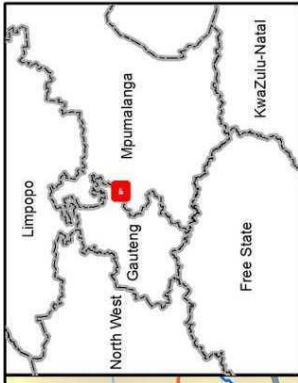
☎ Phone: (011) 207 2060

✉ Fax: 086 676 9950

✉ E-mail: nicolenev@zitholele.co.za

Website: www.zitholele.co.za

Documents Included: EIA Newsletter Comment Form
EIA Locality Map
List of potentially affected properties



LEGEND

- Site A
- Site B
- Site C
- Site F
- Site G
- Site small A
- Kusile Property Boundary
- Non Perennial Rivers
- Perennial Rivers
- updated_landowner_info
- National Freeway
- Main Road
- Secondary Road
- New Kusile Road

RESOURCES/NOTES

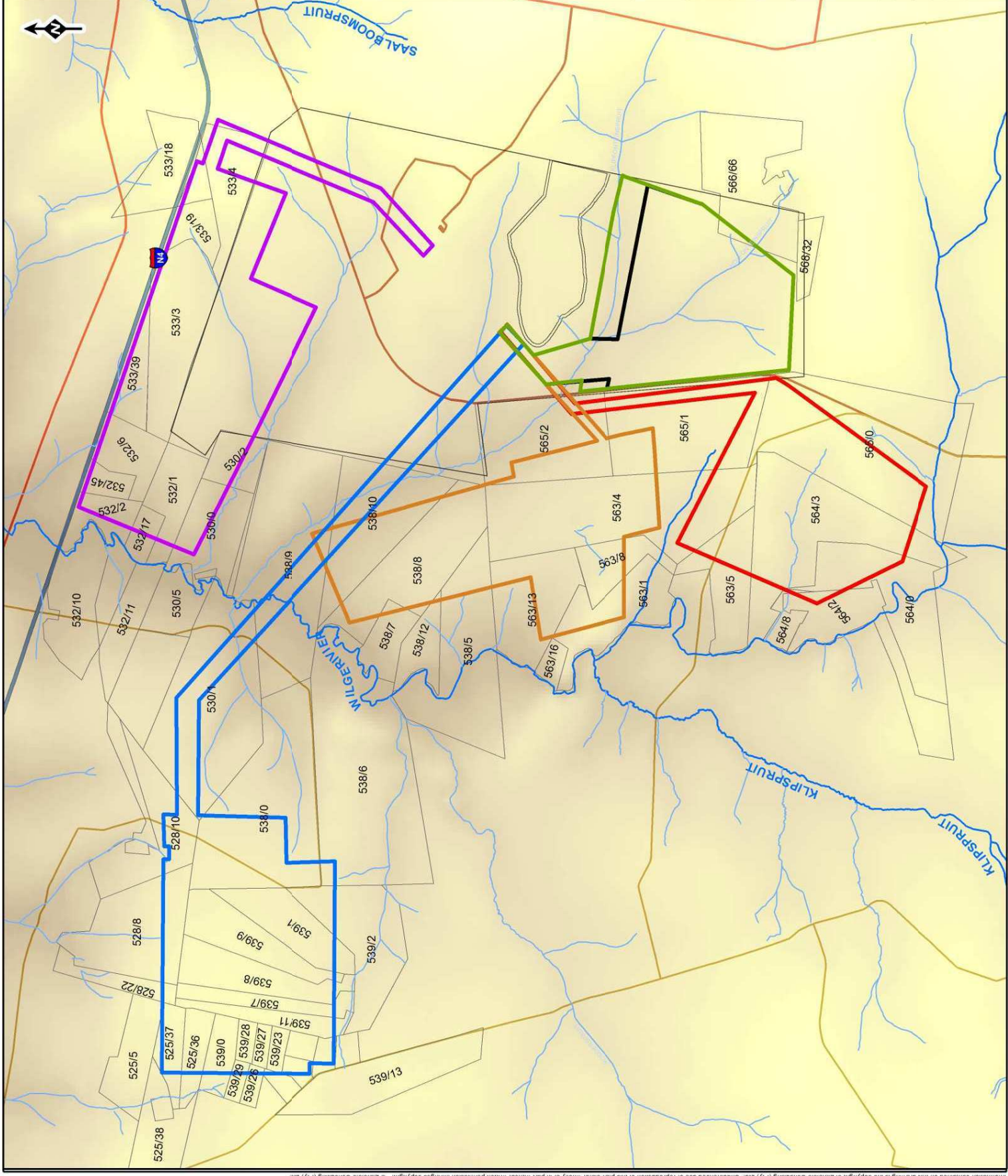
DRAFT

0 0.5 1 2 3
Kilometers

REFERENCE
Coordinate System: GCS Hartbeesthoek 1994

PROJECT
EIA FOR KUSILE ASH DISPOSAL FACILITY

TITLE
**KUSILE 60 YEAR ADF:
SITE ALTERNATIVES**



**EIA AND WASTE MANAGEMENT LICENSE APPLICATION: PROPOSED 60 YEAR ASH
DISPOSAL FACILITY AT KUSILE POWER STATION**

DEA Ref No 12/12/20/2412) (NEAS Reference: DEA/EIA/0000514/2011

POSSIBLY AFFECTED PROPERTIES (per site alternative)

FARM NAME	FARM NO	PORTION NO
Site A (including proposed conveyor route):		
Eskom owned property		
Site B (including proposed conveyor route):		
NOOITGEDACHT	525	5
		36
		37
JAKHALSFONTEIN	528	8
		10
		22
KORTFONTEIN	530	1
BOSSEMANSKRAAL	538	Remainder
		9
		8
		10
WITKLIP	539	Remainder
		1
		2
		7
		8
		9
		11
		23
		26
		27
		28
29		
Site C (including proposed conveyor route):		
KORTFONTEIN	530	Remainder
		1

		2
ONVERWACHT	532	1
		2
		6
		17
		45
SPITSKOP	533	3
		4
		18
		19
		39
Site F (including proposed conveyor route):		
BOSSEMANSKRAAL	538	5
		7
		8
		9
		10
		12
WITPOORT	563	1
		4
		8
		13
		16
DWAALFONTEIN	565	1
		2
Site G (including proposed conveyor route):		
WITPOORT	563	4
		5
NOOITGEDACHT	564	Remainder
		2
		3
		8
DWAALFONTEIN	565	1
		2

ICATION FOR THE PROPOSED EXTENSION FOR THE ASH DISPOSAL FACILITY AT KUSILE POWER STATION

412; NEAS Ref: DEA/EIA/0000514/2011

AFFECTED PROPERTIES: EIA Newsletter

FARMNAME	SG_CODE	FARM_NO	PORTION	RAJ_REGIOIS12_NAME	PROVINCE	AD INFORM
KLIPFONTEIN	TOJR000000	566	40 JR	Delmas	Mpumalanga	Granted / R
KLIPFONTEIN	TOJR000000	566	41 JR	Delmas	Mpumalanga	Granted / R
KLIPFONTEIN	TOJR000000	566	42 JR	Delmas	Mpumalanga	Granted / R
KLIPFONTEIN	TOJR000000	566	43 JR	Delmas	Mpumalanga	Granted / R
KLIPFONTEIN	TOJR000000	566	44 JR	Delmas	Mpumalanga	Granted / R
KLIPFONTEIN	TOJR000000	566	45 JR	Delmas	Mpumalanga	Application
KLIPFONTEIN	TOJR000000	566	46 JR	Delmas	Mpumalanga	Application
KLIPFONTEIN	TOJR000000	566	47 JR	Delmas	Mpumalanga	Application
KLIPFONTEIN	TOJR000000	566	48 JR	Delmas	Mpumalanga	Application
KLIPFONTEIN	TOJR000000	566	49 JR	Delmas	Mpumalanga	Application
KLIPFONTEIN	TOJR000000	566	50 JR	Delmas	Mpumalanga	Application
KLIPFONTEIN	TOJR000000	566	52 JR	Delmas	Mpumalanga	Application
KLIPFONTEIN	TOJR000000	566	53 JR	Delmas	Mpumalanga	Granted / R
KLIPFONTEIN	TOJR000000	566	54 JR	Delmas	Mpumalanga	Granted / R
KLIPFONTEIN	TOJR000000	566	66 JR	Delmas	Mpumalanga	Application
KLIPFONTEIN	TOJR000000	566	10 JR	Delmas	Mpumalanga	Granted / R
KLIPFONTEIN	TOJR000000	566	11 JR	Delmas	Mpumalanga	Granted / R
KLIPFONTEIN	TOJR000000	566	19 JR	Delmas	Mpumalanga	Granted / R
KLIPFONTEIN	TOJR000000	566	21 JR	Delmas	Mpumalanga	Granted / R
KLIPFONTEIN	TOJR000000	566	25 JR	Delmas	Mpumalanga	Granted / R
KLIPFONTEIN	TOJR000000	566	26 JR	Delmas	Mpumalanga	Granted / R
KLIPFONTEIN	TOJR000000	566	30 JR	Delmas	Mpumalanga	Granted / R
	TOJR000000	537	5 JR	Delmas	Mpumalanga	Application
DWAALFONTEIN	TOJR000000	565	1 JR	Delmas	Mpumalanga	Granted / R
DWAALFONTEIN	TOJR000000	565	2 JR	Delmas	Mpumalanga	Granted / R
	TOJR000000	537	0 JR	Delmas	Mpumalanga	Application
	TOJR000000	537	2 JR	Delmas	Mpumalanga	Application
	TOJR000000	537	3 JR	Delmas	Mpumalanga	Application
	TOJR000000	537	4 JR	Delmas	Mpumalanga	Application
KLIPFONTEIN	TOJR000000	566	3 JR	Delmas	Mpumalanga	Granted / R
KLIPFONTEIN	TOJR000000	566	9 JR	Delmas	Mpumalanga	Granted / R
KLIPFONTEIN	TOJR000000	568	32 JR	Delmas	Mpumalanga	Granted / R
KLIPFONTEIN	TOJR000000	566	51 JR	Delmas	Mpumalanga	Application
DWAALFONTEIN	TOJR000000	565	0 JR	Delmas	Mpumalanga	Granted / R

Zitholele Consulting

Reg. No. 2000/000392/07

Posbus 6002 Halfway House 1685
Suid-Afrika
Thandanani Park, Matuka Steeg
Halfway Gardens, Midrand
Tel: + (27) 11 207 2060
Faks: + (27) 86 674 6121
E-pos: mail@zitholele.co.za



Ons Verw.: 12712

13 Desember 2013

Geagte Belanghebbende

OIE Nuusbrief: Omgewingsimpakevaluering en Aansoek om Afvalbestuurlisensie vir die voorgestelde Uitbreiding van die Asverwyderingsinstallasie by Kusile Kragstasie

Hierby aangeheg die volgende dokumente vir u aandag:

- OIE Nuusbrief
- OIE Nuusbrief Kommentaarvorm
- OIE Liggingskaart
- Lys met potensieel geaffekteerde eiendomme

Ons sien uit daarna om u kommentaar te ontvang.

Die uwe

A handwritten signature in black ink, appearing to read 'Nicolene Venter', is placed over a light grey rectangular background.

Nicolene Venter

ZITHOLELE CONSULTING (EDMS.) BPK.

011 207 2060

nicolenev@zitholele.co.za

Z:\PROJECTS\12712 - EIA for Kusile Ash dump\Public Participation\3. Impact Phase\01. EIA Newsletter\Cover Letter\12712-Let-EIA Newsletter-20131214 (Afr).docx

Omgewingsimpakevaluering en Aansoek om Afvalbestuurlisensie vir die voorgestelde Uitbreiding van die Asverwyderingsinstallasie by Kusile Kragstasie



(DO Verw.: 12/12/20/2412; NEAS Verw.: DEA/EIA/0000514/2011)

OIE NUUSBRIEF – DESEMBER 2013

DOEL VAN HIERDIE OIE NUUSBRIEF

Die Kusile 60-jaar asverwyderingsinstallasie (AVI) se OIE het in 2011 'n aanvang geneem met die aankondiging van die projek. Sedert sy aanvang was die projek toenemend ingewikkeld, met talle omgewings-, sosio-ekonomiese en tegniese aspekte om in ag te neem. Weens die kompleksiteit van die OIE is omvangryke raadpleging met owerhede, veral met die Departement van Waterwese (DW) onderneem, wat die terreinseleksie en evalueringsproses wat gevolg is, langer as die verwagte projekskedule laat strek het.

Hierdie OIE Nuusbriëf poog om u op hoogte te bring met betrekking tot die OIE-proses, insluitend die take en openbare raadpleging wat nog onderneem moet word.

AGTERGROND

Zitholele Consulting (Edms.) Bpk. (hierna 'Zitholele Consulting' genoem) is deur Eskom aangestel om die Geïntegreerde Afval- en Omgewingsmagtigingsproses vir die 60-jaar asverwyderingsinstallasie by die Kusile Kragstasie te onderneem. Die Kusile Kragstasie is 'n steenkoolkragstasie wat Eskom tans tussen Bronhorstspuit en eMalaheni in Mpumalanga oprig as deel van die uitbreiding van sy kragopwekkingsvloot.

Die Kusile Kragstasie beskik tans oor omgewingsmagtiging vir 'n dubbele verwyderingsinstallasie wat 10 jaar se as- en gipsneerslag kan hanteer. Sodra asneerslag op die 60-jaar

asverwyderingsinstallasie 'n aanvang neem, sal die dubbele verwyderingsinstallasie slegs die gipsafvalstroom ontvang. Hierdie aanleg is gemagtig as deel van die Rekord van Besluitneming (RvB) wat in 2008 deur die eertydse Departement van Omgewingsake en Toerisme (DOT) vir die ontwikkeling van die kragstasie uitgereik is. Weens die ontoereikendheid daarvan, met inagneming van die kragstasiebedrywighede vir die volgende 60 jaar, verg dit 'n bykomende, groter asverwyderingsinstallasie om die meeste van die as wat deur die kragstasie gegenereer word, te akkommodeer.

PROJEKBESKRYWING

Die verbranding van steenkool in die Kusile Kragstasie wanneer dit eers in bedryf is, sal as produseer wat op 'n omgewingsveilige en volhoubare wyse verwyder sal moet word. Hoewel Eskom probeer om asverwerking aan te moedig en te vermeerder, is daar 'n risiko dat sodanige verwerking nie sal lei tot die wesenlike verbruik daarvan nie. Die enigste bedryfbare opsie om hierdie ekstra afvalstroom te hanteer, is om dit by 'n asverwyderingsinstallasie (AVI) te stort wat spesifiek ontwerp is om die as wat oor 'n tydperk van 60 jaar geproduseer word te akkommodeer, met inagneming van die huidige steenkoolgehalte wat aan die Kusile Kragstasie gelewer sal word.

Tans word dit in die vooruitsig gestel dat die projek die volgende komponente sal insluit:

- 'n Gevoerde droëasverwyderingsinstallasie met 'n beraamde voetspoorgrootte van hoogstens 1 500 ha;

- gepaardgaande infrastruktuur soos stapelaars, aswaterterugvoerdamme, pyplyne en vervoerders;
- 'n vervoerband vir die vervoer van as na die AVI;
- die afvalstroom, wat bestaan uit 'n gekombineerde bodemas en vliegassafvalstroom;
- dienste, wat insluit elektrisiteit- en watertoevoer in die vorm van kraglyne, pyplyne en gepaardgaande infrastruktuur; en
- toegang- en instandhoudingspaaie na die terrein.

Tydens die konseptuele ingenieursontwerp is die konsepmodelle vir die verskillende terreinalternatiewe so ver moontlik geoptimaliseer ten einde die voetspoor van die AVI te verklein deur die stapel hoër te maak. Die AVI-hoogte is egter beperk deur die kenmerke van die onderliggende geologie.

Vervoerders sal gebruik word om die as vanaf die kragstasie na die pasvoorgestelde asinstallasie te vervoer. Daar word in die vooruitsig gestel dat 'n twee-stapelaarsstelsel gebruik sal word om die as van die vervoerbandstelsel op die AVI te plaas.

WAAR IS ONS IN DIE OIE-PROSES?

Openbare raadpleging oor die Konsep Bestekopnameverslag (KBV) is in Februarie en Maart 2012 onderneem. Die Finale Bestekopnameverslag (FBV) en gepaardgaande dokumente is op Dinsdag, 14 Augustus 2012 by die DO ingedien vir aanvaarding van die Finale Bestekopnameverslag (FBV) en goedkeuring van die Plan van Studie (PvS) vir die OIE. Aanvaarding van die FBV en goedkeuring van die PvS is op 8 Oktober 2012 van die DO ontvang. Die FBV is op Zitholele se webwerf (www.zitholele.co.za) en op Eskom se webwerf (www.eskom.co.za/eia) beskikbaar. Dit is belangrik om daarop te let dat die Openbare Deelnameproses (ODP) regdeur die OIE plaasgevind het. Indien u 'n afskrif van die DO se brief ter aanvaarding van die FBV en PvS verlang, rig asseblief u skriftelike versoek per e-pos, faks of brief (kontakbesonderhede hieronder) aan ons.

Zitholele Consulting is tans in die Omgewingsimpakverslagfase van die projek (Figuur 1) en poog om die Konsep Omgewingsimpakverslag (KOIV) en Konsep Omgewingsbestuursprogram (KOBPr) in Januarie 2014 af te handel. As 'n Belanghebbende sal u in kennis gestel

word van die beskikbaarheid van hierdie twee konsepdokumente vir openbare besigtiging en kommentaar.



Figuur 1: OIE-proses Vloeikaart

OORWEGING VAN ALTERNATIEWE

Vyf (5) bedryfbare terreinalternatiewe is tydens die terreinseleksie en bestekopnamefase van die projek geïdentifiseer. Hierdie terreine sluit in Terrein A, B, C, F en G. Daar is voorts geïdentifiseer dat party van hierdie terreine nie groot genoeg is om die hele 60 jaar se asneerslae te akkommodeer nie. Gevolglik is ses (6) verwyderingsscenario's geïdentifiseer en verder gevoer in die OIE-fase. Die bedryfbare verwyderingsscenario's wat vanuit 'n omgewingsoogpunt geïdentifiseer en tydens die OIE-fase ondersoek is, sluit die volgende in:

1. Terrein A
2. Terrein B
3. Terrein C
4. Terrein F en klein A (ingekorte voetspoor van A)
5. Terrein G en klein A (ingekorte voetspoor van A)
6. Terrein F en G gesamentlik

Konseptuele ingenieursontwerp en spesialis impakevaluering is vir die ses (6) verwyderingsscenario's onderneem (sien die liggingskaart).

'n Lys met eiendomme wat potensieel deur hierdie voorgestelde projek geraak sal word, en spesifiek die terreinalternatiewe wat hierbo genoem is, is aangeheg. Die lys met eiendomme, gekategoriseer per terrein, bied die plaasnaam, plaasnommer en gedeeltenommer.

SPESIALISSTUDIES

Die volgende spesialisstudies is deur Zitholele Consulting onderneem, gegrond op die potensiele impakte wat tydens die Bestekopnamefase geïdentifiseer is; kommentaar wat tydens openbare en owerheidsraadpleging ontvang is; en spesifieke vereistes wat deur die instemmende owerhede (DO en DW) uiteengesit is:

- Klassifiseringsevaluering van die As;
- Konseptuele Ingenieursontwerp, Bedryfsplan en Topografiese Opname;
- Geotegniese Evaluering;
- Evaluering van Grondekologie (Fauna en Flora);
- Evaluering van Avifauna;
- Erfenisimpakevaluering;
- Maatskaplike Impakevaluering;
- Evaluering van Oppervlakwater en Vleilanddeliniasie;
- Evaluering van Akwatiese Ekologie;
- Evaluering van Grondwater;
- Evaluering van Verkeersimpak;
- Opinie rondom Luggehalte;
- Evaluering van Geraasimpak;
- Evaluering van Grondsoorte en Grondvermoë;
- Evaluering van Visuele Impak; en
- Evaluering van Volhoubaarheid.

Hierdie spesialisstudies is voltooi en sal aan B&GP's beskikbaar gestel word vir besigtiging tydens die

volgende openbare besigtigingstydperk, wat geskeduleer is om in Januarie 2014 'n aanvang te neem.

KOIV EN KOBPr

Die KOIV sal besonderhede insluit van die openbare deelnameproses wat onderneem is, 'n gedetailleerde beskrywing van die voorgestelde ontwikkeling, evaluering van die bedryfbare alternatiewe en gedetailleerde konseptontwerpe. Die KOIV sal ook versagtingsmaatreëls, gedetailleerde impakevaluering van alle geïdentifiseerde impakte, gedetailleerde spesialisondersoeke en gedetailleerde omgewingsimpakstellings insluit. Die KOIV sal voldoen aan die vereistes van die Nasionale Wet op Omgewingsbestuur, soos gewysig, en aan die OIE-regulasies (Staatskennisgewing R543 – R546) van 2010.

Die KOBPr sal die versagtings- en bestuursmaatreëls uiteensit wat tydens die oprigtings- en bedryfsfase van die AVI onderneem moet word. Versagtings- en bestuursmaatreëls sal die potensieel wesenlike impakte aanspreek wat met die werksaamhede tydens enige van die projekfases gepaard gaan ten einde die omgewing (biofisies sowel as maatskaplik) teen skade te beskerm.

Die KOIV en KOBPr sal vanaf Januarie tot Maart 2014 aan B&GP's beskikbaar gestel word vir besigtiging en kommentaar. Die beskikbaarheid van die KOIV en KOBPr, asook die datum van die Openbare Vergadering, sal in die onderskeie koerante en media wat tydens die Bestekopnamefase gebruik is, geadverteer word. Ná hierdie openbare en owerheidsbesigtigingstydperk sal hierdie dokumente, waar van toepassing, bygewerk word met die inligting wat van belanghebbendes ontvang is. Die FOIV en OBPr sal aan die publiek voorgelê word vir finale oorsig en kommentaar en aan die DO vir besluitneming.

Monitering van omgewingsvoldoening sal tydens die konstruksie- en bedryfsfase geïmplementeer word om voldoening te verseker aan die bepalinge van die FOIV, OBPr en die voorwaardes soos gestipuleer in die Afvalbestuurlisensie wat deur die DO uitgereik word.

OPENBARE DEELNAMEPROSES

Ons wil graag van hierdie geleentheid gebruik maak om aan Belanghebbendes 'n kort opsomming te bied van die Openbare Deelnameproses (ODP) wat tydens die Bestekopnamefase onderneem is, en van die belangrike bedrywighede tydens hierdie fase:

- Advertensies is tussen 7 en 14 Oktober 2011 in die koerante – *Beeld, Corridor Gazette, Die Springs Advertiser, Echo, Ekasi News, Mpumalanga News, Ridge Times News, Streeknuus, The Herald en Witbank Nuus* – geplaas om die geleentheid vir deelname aan te kondig;
- Vergaderings met owerhede om ooreen te kom oor proses- en studievereistes;
- Aanvanklike kennisgewing aan die publiek en grondeienaars, wat die oprigting van terreinkennisgewings, die verspreiding van Agtergrondinligtingsdokumente (AID's) en 'n uitnodiging om by te dra tot die OIE-proses aan B&GP's in en om die projekgebied ingesluit het;
- Verspreiding en aankondiging van die beskikbaarheid van die KBV en Kommentaar-en-Antwoordverslag (KAV);
- Sameroeping van 'n vergadering met Belanghebbendes in die projekgebied om kommentaar oor die KBV in te win;
- Bywerking en indiening van die FBV en Plan van Studie vir die OIE by die DO; en
- Verspreiding van die FBV en byeenbring van kommentaar voor indiening by die DO.

Openbare Deelname en raadpleging met owerhede vir kommentaar oor die KOIV is geskeduleer om 'n aanvang te neem in Januarie 2014 tot Maart 2014. Kennisgewings van belangrike Openbare Deelnamebedrywighede, d.i. Openbare Vergadering en beskikbaarheid van die KOIV en KOBPr vir besigtiging en kommentaar, sal deur e-poskennisgewings aan alle geregistreerde Belangstellende en Geaffekteerde Partye (B&GP's) geskied. B&GP's wat nie e-posadresse het nie, sal per faks of pos verwittig word, afhangend van die kontakbesonderhede wat deur die B&GP's verskaf is. Die KOIV

en KOBPr sal in dieselfde openbare lokale geplaas word as tydens die Bestekopnamefase. Geregistreerde B&GP's kan 'n skriftelike versoek vir 'n elektroniese kopie (CD) van hierdie konsep en finale dokumente rig.

DEURLOPENDE OPENBARE BETROKKENHEID

Openbare betrokkenheid is een van die hoekstene van doeltreffende omgewingsevaluering aangesien dit u kommentaar is wat waarde tot 'n geïntegreerde en volhoubare omgewingsproses toevoeg. Dit is ook 'n raadplegingsproses wat lei tot 'n gesamentlike poging deur belanghebbendes, tegniese spesialiste, die owerhede en die applikant – wat saamwerk om beter besluite mee te bring. Daarom versoek ons weereens u aktiewe deelname aan hierdie fase van die OIE.

PAD VORENTOE

Neem asseblief kennis dat openbare deelname 'n deurlopende kommunikasie- en raadplegingsproses is. U sal dus deur persoonlike korrespondensie en advertensies ingelig word van die verskeie oorblywende stadiums van hierdie OIE, insluitend die appèlprosedures om te volg sodra 'n besluit deur die bevoegde owerheid (DO) geneem is.

Indien u tydens hierdie impakevalueringfase enige verdere inligting verlang of kommentaar wil indien betreffende die spesialisstudies oor die voorgestelde Asverwyderingsinstallasie-projek, is u welkom om u insette skriftelik aan die Openbare Deelnamekantoor hieronder te stuur of deur die Kommentaarvorm in te vul wat by hierdie OIE-nuusbrief ingesluit is.

Ons sien uit na u bydraes en deurlopende betrokkenheid!

KOMMENTAAR EN NAVRAE

Nicolene Venter

Posbus 6002

Halfway House, 1685

Tel: 011 207 2060

Faks: 086 676 9950

E-pos: nicolenev@zitholele.co.za

Webwerf: www.zitholele.co.za

Ingeslote dokumentasie:

OIE-nuusbrief Kommentaarvorm

OIE Liggingskaart

Lys met potensieel geaffekteerde eiendomme

**Omgewingsimpakstudies en
Waterbestuurslisensie Aansoeke vir die
voorgestelde
60 jaar aswegdoeningsfasiliteit by Kusile
Kragstasie**

DEA Vers.no 12/12/20/2412 en NEAS Verw.no.: DEA/EIA/0000514/2011

**KOMMENTAARVORM
OIS NUUSBRIEF**

Desember 2013



OIE Publieke Deelname Kantoor

Nicolene Venter
Zitholele Consulting (Edms) Bpk
Posbus 6002, Halfway House, 1685
Tel: (011) 207 2076/2075/2077
Faks: 086-676-9950
E-pos: nicolenev@zitholele.co.za

Voltooi asseblief en stuur terug aan die Publieke Deelname Kantoor (inligting soos bo)

TITEL		NAAM	
VAN			
ORGANISASIE (Vermy asb afkortings)			
ADRES		POSKODE	
TEL NO.			
SELFOON NO.			
FAKS NO.			
E-POS ADRES			
HANDTEKENING		Plaasnaam en gedeeltenommer, indien u moontlik geaffekteerde grondeienaar is <u>of</u> u eiendom aangresend tot die voorgestelde terreine is	
DATUM			

KOMMENTAAR RAKENDE INLIGTING VOORSIEN IN DIE OIE NUUSBRIEF (Gebruik asb addisionele bladsye, indien nodig)

.....

.....

.....

.....

.....

.....

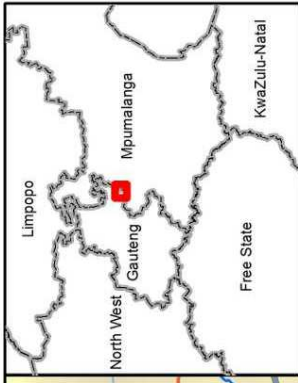
.....

.....

.....

.....

**DANKIE VIR U BYDRAE
(see reverse side for English)**

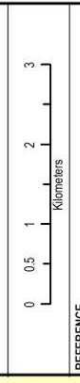


LEGEND

- Site A
- Site B
- Site C
- Site F
- Site G
- Site small A
- Kusile Property Boundary
- Non Perennial Rivers
- Perennial Rivers
- updated_landowner_info
- National Freeway
- Main Road
- Secondary Road
- New Kusile Road

RESOURCES/NOTES

DRAFT

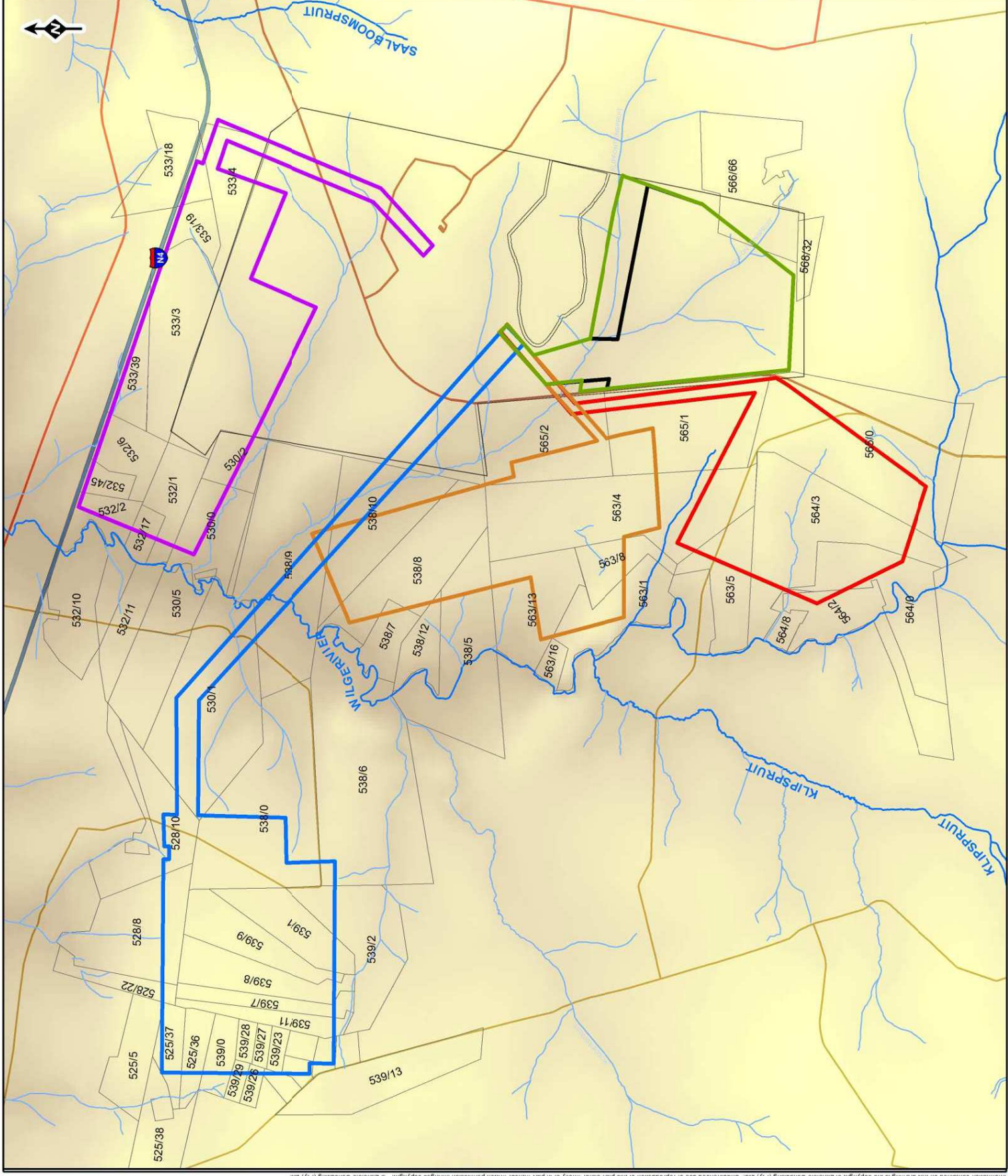


REFERENCE
Coordinate System: GCS Hartbeesthoek 1994

PROJECT
EIA FOR KUSILE ASH DISPOSAL FACILITY

TITLE
KUSILE 60 YEAR ADF:
SITE ALTERNATIVES

PROJECT No. 12712	REV 0
SCALE 1:66 924	A3
GIS	SP
CHECK	MV
REVIEW	MV
	06/12/2013
	06/12/2013
	06/12/2013



**EIA AND WASTE MANAGEMENT LICENSE APPLICATION: PROPOSED 60 YEAR ASH
DISPOSAL FACILITY AT KUSILE POWER STATION**

DEA Ref No 12/12/20/2412) (NEAS Reference: DEA/EIA/0000514/2011

POSSIBLY AFFECTED PROPERTIES (per site alternative)

FARM NAME	FARM NO	PORTION NO
Site A (including proposed conveyor route):		
Eskom owned property		
Site B (including proposed conveyor route):		
NOOITGEDACHT	525	5
		36
		37
JAKHALSFONTEIN	528	8
		10
		22
KORTFONTEIN	530	1
BOSSEMANSKRAAL	538	Remainder
		9
		8
		10
WITKLIP	539	Remainder
		1
		2
		7
		8
		9
		11
		23
		26
		27
		28
29		
Site C (including proposed conveyor route):		
KORTFONTEIN	530	Remainder
		1

		2
ONVERWACHT	532	1
		2
		6
		17
		45
SPITSKOP	533	3
		4
		18
		19
		39
Site F (including proposed conveyor route):		
BOSSEMANSKRAAL	538	5
		7
		8
		9
		10
		12
WITPOORT	563	1
		4
		8
		13
		16
DWAALFONTEIN	565	1
		2
Site G (including proposed conveyor route):		
WITPOORT	563	4
		5
NOOITGEDACHT	564	Remainder
		2
		3
		8
DWAALFONTEIN	565	1
		2

ICATION FOR THE PROPOSED EXTENSION FOR THE ASH DISPOSAL FACILITY AT KUSILE POWER STATION

412; NEAS Ref: DEA/EIA/0000514/2011

AFFECTED PROPERTIES: EIA Newsletter

FARMNAME	SG_CODE	FARM_NO	PORTION	RAJ_REGION	S12_NAME	PROVINCE	AD INFORM
KLIPFONTEIN	TOJR00000	566	40 JR	Delmas	Mpumalanga	Granted / R	
KLIPFONTEIN	TOJR00000	566	41 JR	Delmas	Mpumalanga	Granted / R	
KLIPFONTEIN	TOJR00000	566	42 JR	Delmas	Mpumalanga	Granted / R	
KLIPFONTEIN	TOJR00000	566	43 JR	Delmas	Mpumalanga	Granted / R	
KLIPFONTEIN	TOJR00000	566	44 JR	Delmas	Mpumalanga	Granted / R	
KLIPFONTEIN	TOJR00000	566	45 JR	Delmas	Mpumalanga	Application	
KLIPFONTEIN	TOJR00000	566	46 JR	Delmas	Mpumalanga	Application	
KLIPFONTEIN	TOJR00000	566	47 JR	Delmas	Mpumalanga	Application	
KLIPFONTEIN	TOJR00000	566	48 JR	Delmas	Mpumalanga	Application	
KLIPFONTEIN	TOJR00000	566	49 JR	Delmas	Mpumalanga	Application	
KLIPFONTEIN	TOJR00000	566	50 JR	Delmas	Mpumalanga	Application	
KLIPFONTEIN	TOJR00000	566	52 JR	Delmas	Mpumalanga	Application	
KLIPFONTEIN	TOJR00000	566	53 JR	Delmas	Mpumalanga	Granted / R	
KLIPFONTEIN	TOJR00000	566	54 JR	Delmas	Mpumalanga	Granted / R	
KLIPFONTEIN	TOJR00000	566	66 JR	Delmas	Mpumalanga	Application	
KLIPFONTEIN	TOJR00000	566	10 JR	Delmas	Mpumalanga	Granted / R	
KLIPFONTEIN	TOJR00000	566	11 JR	Delmas	Mpumalanga	Granted / R	
KLIPFONTEIN	TOJR00000	566	19 JR	Delmas	Mpumalanga	Granted / R	
KLIPFONTEIN	TOJR00000	566	21 JR	Delmas	Mpumalanga	Granted / R	
KLIPFONTEIN	TOJR00000	566	25 JR	Delmas	Mpumalanga	Granted / R	
KLIPFONTEIN	TOJR00000	566	26 JR	Delmas	Mpumalanga	Granted / R	
KLIPFONTEIN	TOJR00000	566	30 JR	Delmas	Mpumalanga	Granted / R	
	TOJR00000	537	5 JR	Delmas	Mpumalanga	Application	
DWAALFONTEIN	TOJR00000	565	1 JR	Delmas	Mpumalanga	Granted / R	
DWAALFONTEIN	TOJR00000	565	2 JR	Delmas	Mpumalanga	Granted / R	
	TOJR00000	537	0 JR	Delmas	Mpumalanga	Application	
	TOJR00000	537	2 JR	Delmas	Mpumalanga	Application	
	TOJR00000	537	3 JR	Delmas	Mpumalanga	Application	
	TOJR00000	537	4 JR	Delmas	Mpumalanga	Application	
KLIPFONTEIN	TOJR00000	566	3 JR	Delmas	Mpumalanga	Granted / R	
KLIPFONTEIN	TOJR00000	566	9 JR	Delmas	Mpumalanga	Granted / R	
KLIPFONTEIN	TOJR00000	568	32 JR	Delmas	Mpumalanga	Granted / R	
KLIPFONTEIN	TOJR00000	566	51 JR	Delmas	Mpumalanga	Application	
DWAALFONTEIN	TOJR00000	565	0 JR	Delmas	Mpumalanga	Granted / R	

Nicolene Venter

From: Nicolene Venter
Sent: 05 March 2014 02:31 PM
To: Mathys Vosloo
Cc: Leoni Lubbe (Leonil@zitholele.co.za)
Subject: EIA: Proposed Kusile 60 Year ADF-Mining- & Prospecting Right Information / OIE: Voorgestelde Kusile 60 Jaar AWF: Mynreg en Prospekterregte
Attachments: 12712-35-MiningProspecting Right Data Form-Rev 0.pdf; 12712-35-MiningProspecting Right Data Form(Afr)-Rev 0.pdf

Importance: High

Tracking:	Recipient	Delivery	Read
	Mathys Vosloo	Delivered: 05/03/2014 02:28 PM	Read: 05/03/2014 02:43 PM
	Leoni Lubbe (Leonil@zitholele.co.za)	Delivered: 05/03/2014 02:28 PM	
	'Christie Truter'		
	'Adriaan Loots'		
	'André Cherry'		
	'Andreas Moll'		
	'Barry Doman'		
	'Hennie Terblanche'		
	'Joerné Buys'		
	'Buks Herman'		
	'Carel Frylinck'		
	'Coen Gerber'		
	'Len Haasbroek'		
	':'		
	'Chris Kruger'		
	'Christo van der Merwe'		
	'Christina Louw'		
	'Christiaan Gerber'		
	'Derick Redenlinghuys'		
	'Duncan Prinsloo'		
	'Francois Prinsloo'		
	'Ernest Wohltitz'		
	'Faith Skosana'		
	'Frans Kerkhoff'		
	'Andre Roets'		
	'Hermanus Roux'		
	'Hans Janse van Rensburg'		
	'Hans Jansen van Rensburg'		
	'Hans van Rensburg'		
	'Len Ditchfied'		
	'Les Adlam'		
	'John Fourie'		
	'J & M Gericke'		

Recipient	Delivery	Read
'Sarel Janse Van Rensburg'		
'Johann Kotzé'		
'John Strick'		
'JS Wolfaardt'		
'Gertie Janse van Rensburg'		
'Karel Rajchrt'		
'LHW van Dalen'		
'Hendrik Kotze'		
'L P J Louw'		
'Lucas Skosana'		
'Ivan Ensulin'		
'Martin le Maitre'		
'Mike Combrink'		
'Rudolph Raath'		
'Manie Venter'		
'Ruan Roets'		
'J Fischer'		
'Barry & Sandria Lensley'		
'Simon Marothi'		
'Sonja Bierman'		
'Thami & Luyanda Sondiyazi'		
Leoni Lubbe		Read: 12/03/2014 11:46 AM

Dear Landowner,

Zitholele Consulting would appreciate your assistance by providing us with any Mining Right and/or Prospecting Right applications that is registered against your property.

Attached for your attention is the *Mining Right and/or Prospecting Right Data Form* that we kindly request you to please complete and return to me before or on **Friday 14 March 2014**.

We have included all property owners identified to date on this e-mail for the following site alternatives and proposed conveyor route:

- Site B
- Site C
- Site F
- Site G

Site A is owned by Eskom

Your co-operation in this matter will be highly appreciated.

Beste Grondeienaar,

Zitholele Consulting sal u hulp waardeer om ons te voorsien van enige aansoeke om Mynreg en/of Prospekterreg wat teen u eiendom geregistreer is.

Hierby aangeheg vir u aandag is die Mynreg en/of Prospekterreg Datavorm wat ons u vriendelik versoek om in te vul en voor of op Vrydag 14 Maart 2014 aan my terug te besorg.

Ons het al die grondeienaar by hierdie e-pos ingesluit wat tot datum vir die ondergenoemde terrin-alternatiewe (insluitende die voorgestelde vervoerbandroete) geïdentifiseer is:

- Terrein B
- Terrein C
- Terrein F
- Terrein G

Terrein A behoort aan Eskom

U samewerking in hierdie verband word hoog op prys gestel.



Kind Regards / Vriendelike Groete

Nicolene Venter [Cert. Public Relations]

Senior Public Participation Practitioner

Building 1, Maxwell Office Park, Magwa Crescent West, cnr Allandale Road & Maxwell Drive, Waterfall City, Midrand, RSA

T: +27 11 207 2060 **D:** +27 11 207 2077 **F:** +27 86 676 9950 **C:** +27 83 377 9112

E: nicolenev@zitholele.co.za **W:** www.zitholele.co.za



Please consider the environment before printing this e-mail!

ZITHOLELE
CONSULTING

**Environmental Impact Assessment and Waste Management License Application
for the proposed Extension for the Ash Disposal Facility at Kusile Power Station**

(DEA Ref No 12/12/20/2412) (NEAS Reference: DEA/EIA/0000514/2011)

MINING RIGHT AND/OR PROSPECTING RIGHT

DATA FORM

March 2014

Throughout the EIA and Public Participation Processes, Zitholele Consulting has been in consultation with the Department of Mineral Resources (DMR) and you as possibly affected landowners regarding the proposed establishment of an ash disposal facility for Eskom’s Kusile Power Station to accommodate 60 years of ash disposal from the Power Station.

It is crucial to ensure that Zitholele Consulting not only accurately reflect the various properties that could be impacted upon by this proposed project (referring to site A and B), but also to ensure that information regarding Mining Rights that have been registered against a landowner’s property as well as notices of Prospecting Right Applications to the landowner, are accurately reflected.

With the Mining Right and Prospecting Right information received from you as landowner, the information will be captured on a Landowners’ Map, which will reflect these Rights per property.

Zitholele Consulting therefore request that the form below be completed reflecting:

1. Mining Right registered against your property; and if so, who is the Mining Right Holder; and
2. Prospecting Right Applications received; and if so, the Company who will be doing the prospecting on your property.

LAND OWNER INFORMATION					
Title:		Name:		Surname:	
Identification Number:					
Postal Address:					
Telephone No.:					
Fax No.:					
Cell Phone No.:					
E-mail address:					

PROPERTY INFORMATION	
PARENT FARM NAME: (eg Kleinbegin)	
PARENT FARM NO: (eg 337 J)	
PORTION NO:	
PORTION NAME (if different from Parent Farm Name):	
SG DIAGRAM NO: (eg 162/1829)	

MINING RIGHT INFORMATION	
DMR REFERENCE (for Mining Right):	
NAME OF MINING RIGHT HOLDER	
CONTACT DETAILS OF MINING RIGHT HOLDER	
THERE IS <u>NO</u> MINING RIGHT(S) REGISTERED AGAINST MY PROPERTY(TIES)	
Name & Surname (in print please)	Signature

PROSPECTING RIGHT INFORMATION	
DMR REFERENCE (for Mining Right):	
COMPANY CONDUCTING THE PROSPECTING	
CONTACT DETAILS OF PROSPECTING RIGHT HOLDER	
COMPANY CONDUCTING THE CONSULTATION PROCESS	
CONTACT DETAILS OF CONSULTATION COMPANY	
THERE IS <u>NO</u> PROSPECTING RIGHT(S) REGISTERED AGAINST MY PROPERTY(TIES)	
Name & Surname (in print please)	Signature

Name of Landowner (in print): _____

Signature: _____ Date: _____

To ensure the confidentiality of this information, we kindly request you to only e-mail your completed and signed form to:

nicolenev@zitholele.co.za

Zitholele Consulting do hereby declare that they shall keep the existence and detail of the information provided on this form confidential. Furthermore, Zitholele Consulting shall not divulge any information to any third party, other than Eskom as the proponent, during or after completion of the EIA.

This study is being conducted on behalf of ESKOM

Omgewingsimpakevaluering en Aansoek om Afvalbestuurslisensie vir die voorgestelde Uitbreiding van die Asverwyderingsinstallasie by Kusile Kragstasie
(DO Verw. No.: 12/12/20/2412) (NEAS Verw. No.: DEA/EIA/0000514/2011)

MYNREG EN/OF PROSPEKTEERREG
DATAVORM
Maart 2014

Regdeur die OIE- en Openbare Deelnameproses het Zitholele Consulting oorleg gepleeg met die Departement van Minerale Hulpbronne (DMH) en met u as moontlik geaffekteerde grondeienaars betreffende die voorgestelde oprigting van 'n asverwyderingsinstallasie vir Eskom se Kusile Kragstasie om voorsiening te maak vir 60 jaar se asverwydering vanaf die Kragstasie.

Dit is noodsaaklik om te verseker dat Zitholele Consulting nie net die verskeie eiendomme wat deur hierdie voorgestelde projek (met verwysing na Terrein A en B) geraak kan word akkuraat weergee nie, maar ook om toe te sien dat inligting betreffende Mynregte wat teen 'n grondeienaar se eiendom geregistreer is, asook kennisgewings van Aansoeke om Prospekterreg aan die eienaar, akkuraat weergegee word.

Tesame met die inligting oor Mynreg en Prospekterreg wat van u as grondeienaar ontvang is, sal die inligting op 'n Grondeienaarskaart aangeteken word, wat hierdie Regte per eiendom sal weergee.

Zitholele Consulting versoek derhalwe dat die vorm hieronder ingevul word om die volgende weer te gee:

1. Mynreg wat teen u eiendom geregistreer is; en indien wel, wie die houer van die Mynreg is; en
2. Aansoeke om Prospekterreg wat ontvang is; en indien wel, die Maatskappy wat die prospektering op u eiendom sal doen.

INLIGTING OOR GRONDEIENAAR					
Titel:		Naam:		Van:	
Identifikasienommer:					
Posadres:					
Telefoonnommer:					
Faksnommer:					
Selfoonnommer:					
E-posadres:					

PROJEKINLIGTING	
OORSPRONKLIKE PLAAS- NAAM (bv. Kleinbegin):	
OORSPRONKLIKE PLAAS- NOMMER (bv. 337 J):	
GEDEELTENOMMER:	
NAAM VAN GEDEELTE (indien dit verskil van die Oorspronklike Plaasnaam):	
LG DIAGRAMNOMMER (bv. 162/1829):	

MYNREGINLIGTING			
MDH VERWYSING (vir Mynreg):			
NAAM VAN MYNREGHOUER:			
KONTAKBESONDERHEDE VAN MYNREGHOUER:			
DAAR IS <u>GEEN</u> MYNREG(TE) TEEN MY EIENDOM(ME) GEREISTREER NIE			
Naam & Van (in drukskrif asseblief)		Handtekening	

PROSPEKTEERREGINLIGTING			
MDH VERWYSING (vir Mynreg):			
MAATSKAPPY WAT PROSPEKTEERWERK DOEN:			
KONTAKBESONDERHEDE VAN PROSPEKTEERREGHOUER:			
MAATSKAPPY WAT RAADPLEGINGSPROSES UITVOER			
KONTAKBESONDERHEDE VAN RAADPLEGINGS- MAATSKAPPY			
DAAR IS <u>GEEN</u> PROSPEKTEERREG(TE) TEEN MY EIENDOM(ME) GEREISTREER NIE			
Naam & Van (in drukskrif asseblief)		Handtekening	

Naam van Grondeienaar (in drukskrif):

Handtekening: _____ Datum: _____

Ten einde die vertroulikheid van hierdie dokument te verseker, versoek ons u vriendelik om u ingevulde en ondertekende vorm slegs te e-pos aan:

nicolenev@zitholele.co.za

Zitholele Consulting verklaar hiermee dat hulle die bestaan en besonderhede van die inligting wat op hierdie vorm verskaf word, vertroulik sal hou. Voorts sal Zitholele Consulting geen inligting aan enige derde party, behalwe aan Eskom as die proponent, verstrek nie, hetsy tydens of na afloop van die OIE.

Hierdie evaluering word namens ESKOM onderneem

Nicolene Venter

From: Patiswa Mnqokoyi
Sent: 23 May 2014 03:36 PM
Subject: EIA & WML APPLICATIONS FOR THE PROPOSED ASH DISPOSAL FACILITY AT KUSILE POWER STATION – Project Status Update
Attachments: 12712 - Kusile 60 year ADF Newsletter - Rev 1.pdf; 12712-EIA Locality Map.pdf
Importance: High

Dear Stakeholder,

DEA Ref No 12/12/20/2412) (NEAS Reference: DEA/EIA/0000514/2011)

We would like to take this opportunity to provide you with a brief project status update since our last communication to you regarding the above-mentioned proposed project.

In December 2013 we distributed the EIA Newsletter (attached for easy reference) which contained key technical, site alternatives and environmental aspects as well as dates in terms of the EIA process (**Figure 1: EIA process flow chart**). Since then, a number of strategic matters needed to be attended to which impacted on the dates provided.

The latest project information and envisaged timelines are as follows:

- Project Status:
All outstanding technical issues have been sorted out and the DEIR is in an advanced stage of completion.
- Updated envisaged EIA and public participation time lines:
 - Draft Environmental Impact Assessment Report (DEIR) and Draft Environmental Management Programme (DEMPr)
 - Envisaged review period: Tuesday 17 June 2014 to Monday 28 July 2014
 - Key Stakeholder Workshop (Government Departments, Organs of State, Chairpersons of Associations, etc)
 - Envisaged week of 23 June 2014
 - Presenting summary of the environmental findings and mitigation measures proposed
 - To receive comments on the DEIR and DEMPr from the attendees
 - Opportunity to raise any additional comments / concerns not yet raised in the EIA process
 - Focus Group Meeting with affected and adjoining landowners:
 - Envisaged week of 23 June 2014
 - Presenting summary of the environmental findings and mitigation measures proposed
 - To receive comments on the DEIR and DEMPr from the attendees
 - Opportunity to raise any additional comments / concerns not yet raised in the EIA process
 - Public Meeting (all interested and affected parties)
 - Envisaged week of 23 June 2014
 - Presenting summary of the environmental findings and mitigation measures proposed
 - To receive comments on the DEIR and DEMPr from the attendees
 - Opportunity to raise any additional comments / concerns not yet raised in the EIA process
 - Final Environmental Impact Assessment Report (FEIR) and Draft Environmental Management Programme (EMPr)
 - Envisaged review period: 09 September 2014 to Thursday 09 October 2014

It is important to note, that should any of the above-mentioned envisaged dates change, you will be notified accordingly.

A word of thanks to all the stakeholders who had participated thus far in the EIA and public participation processes.

Kind Regards,

Nicolene Venter [Cert. Public Relations]

Senior Public Participation Practitioner

Building 1, Maxwell Office Park, Magwa Crescent West, cnr Allandale Road & Maxwell Drive, Waterfall City, Midrand, RSA

T: +27 11 207 2060 **D:** +27 11 207 2077 **F:** +27 86 676 9950 **C:** +27 83 377 9112

E: nicolenev@zitholele.co.za **W:** www.zitholele.co.za



Please consider the environment before printing this e-mail!



Nicolene Venter

From: Rudie Briel <rudie@eaglespride.co.za>
Sent: 27 February 2014 07:45 AM
To: Nicolene Venter
Cc: Mathys Vosloo
Subject: RE: Kusile 60 Jaar As Wegdoensingfasiliteit - Opsomming en bevestiging van teleofniese gesprek

Beste Nicolene,

Dankie vir die terugvoer! Jou opsomming is 'n akurate weerspieëling van ons gesprek.

Groete,

Rudie Briel

Commercial Manager
Eagles Pride Hatchery (Pty) Ltd
Tel: +27 12 808 9930/1/2
Fax: 086 691 5931
Cell: +27 82 304 8366
E-Mail: rudie@eaglespride.co.za

 Please consider the environment before printing this e-mail
E-Mail Disclaimer: www.eaglespride.co.za

From: Nicolene Venter [<mailto:nicolenev@zitholele.co.za>]
Sent: 26 February 2014 04:53 PM
To: Rudie Briel
Cc: Mathys Vosloo
Subject: OIE: Kusile 60 Jaar As Wegdoensingfasiliteit - Opsomming en bevestiging van teleofniese gesprek

Beste Rudie,

Graag bevestig ek ons telefoniese gesprek van vanmiddag waarin jy versoek het of 'n besluit rakende die gekose terrein vir die 60 Jaar Asprojek vir Kusile Kragstasie al geneem is.

Soos genoem, blyk dit op hierdie stadium of terrein A die mees geskikste terrein is, maar die bevestiging rondom my antwoord sal dalk eers deur die loop van die week bevestig kan word. Ek sluit Mathys Vosloo, projekbestuurder vir die OIE by hierdie kommunikasie in.

Ek bevestig ook dat jy genoem het dat jy dringend moet weet wat die besluit rondom die terrein is aangesien uitbreidings aan die infrastruktuur van Eagles Pride gedoen moet doen en aangesien julle eiendom aangrensend tot terrein B is, sal die vestiging van 'n asfasiliteit Eagles Pride se besig nadelig beïndvloed.

Bevestig asseblief of bogenoemde opsomming van ons gesprek korrek is. Indien nie, is jy meer as welkom om korreksies aan te bring.

Vriendelike groete

We look forward to welcoming you to our new offices in Waterfall City

Please take note of our new contact details listed below

Nicolene Venter [Cert. Public Relations]

Senior Public Participation Practitioner

Building 1, Maxwell Office Park, Magwa Crescent West, cnr Allandale Road & Maxwell Drive, Waterfall City, Midrand, RSA

T: +27 11 207 2060 **D:** +27 11 207 2077 **F:** +27 86 676 9950 **C:** +27 83 377 9112

E: nicolenev@zitholele.co.za **W:** www.zitholele.co.za



Please consider the environment before printing this e-mail!



Nicolene Venter

From: Nicolene Venter
Sent: 05 March 2014 02:55 PM
To: 'John Fourie'
Subject: RE: Proposed Kusile 60 Year ADF-Mining- & Prospecting Right Information / OIE: Voorgestelde Kusile 60 Jaar AWF: Mynreg en Prospekterregte

Hi Johan,

Correct me if I am wrong, but it is my understanding that the landowner should know or be informed of who owns the mining right to his property, and a consultation process is followed for prospecting right applications. There, also the landowner is informed by the consultancy who is conducting the consultation process of the application?

Clarification welcome.



Kind Regards,

Nicolene Venter [Cert. Public Relations]

Senior Public Participation Practitioner

Building 1, Maxwell Office Park, Magwa Crescent West, cnr Allandale Road & Maxwell Drive, Waterfall City, Midrand, RSA

T: +27 11 207 2060 **D:** +27 11 207 2077 **F:** +27 86 676 9950 **C:** +27 83 377 9112

E: nicolenev@zitholele.co.za **W:** www.zitholele.co.za



Please consider the environment before printing this e-mail!



From: John Fourie [<mailto:jfourie1@sars.gov.za>]

Sent: 05 March 2014 02:41 PM

To: Nicolene Venter

Subject: RE: Proposed Kusile 60 Year ADF-Mining- & Prospecting Right Information / OIE: Voorgestelde Kusile 60 Jaar AWF: Mynreg en Prospekterregte

Mining an prospecting rights were disowned by government and allocated to whomever applied successfully.

The landowner have no knowledge of who these rights were allocated to.

Regards

John Fourie

(012)422 5023 / 082 4668060

SEE: Team Leader Finance

From: Nicolene Venter [<mailto:nicolenev@zitholele.co.za>]

Sent: 05 March 2014 02:27 PM

To: Mathys Vosloo

Cc: Leoni Lubbe

Subject: EIA: Proposed Kusile 60 Year ADF-Mining- & Prospecting Right Information / OIE: Voorgestelde Kusile 60 Jaar AWF: Mynreg en Prospekterregte

Importance: High

Dear Landowner,

Zitholele Consulting would appreciate your assistance by providing us with any Mining Right and/or Prospecting Right applications that is registered against your property.

Attached for your attention is the *Mining Right and/or Prospecting Right Data Form* that we kindly request you to please complete and return to me before or on **Friday 14 March 2014**.

We have included all property owners identified to date on this e-mail for the following site alternatives and proposed conveyor route:

- Site B
- Site C
- Site F
- Site G

Site A is owned by Eskom

Your co-operation in this matter will be highly appreciated.

Beste Grondeienaar,

Zitholele Consulting sal u hulp waardeer om ons te voorsien van enige aansoeke om Mynreg en/of Prospekterreg wat teen u eiendom geregistreer is.

Hierby aangeheg vir u aandag is die Mynreg en/of Prospekterreg Datavorm wat ons u vriendelik versoek om in te vul en voor of op Vrydag 14 Maart 2014 aan my terug te besorg.

Ons het al die grondeienaar by hierdie e-pos ingesluit wat tot datum vir die ondergenoemde terrin-alternatiewe (insluitende die voorgestelde vervoerbandroete) geïdentifiseer is:

- Terrein B
- Terrein C
- Terrein F
- Terrein G

Terrein A behoort aan Eskom

U samewerking in hierdie verband word hoog op prys gestel.



Kind Regards / Vriendelike Groete


Nicolene Venter [Cert. Public Relations]

Senior Public Participation Practitioner

Building 1, Maxwell Office Park, Magwa Crescent West, cnr Allandale Road & Maxwell Drive, Waterfall City, Midrand, RSA

T: +27 11 207 2060 **D:** +27 11 207 2077 **F:** +27 86 676 9950 **C:** +27 83 377 9112

E: nicolenev@zitholele.co.za **W:** www.zitholele.co.za

 Please consider the environment before printing this e-mail!

ZITHOLELE
CONSULTING

Please Note: This email and its contents are subject to our email legal notice which can be viewed at http://www.sars.gov.za/AllDocs/Documents/email_disclaimer.pdf

Nicolene Venter

From: Nicolene Venter
Sent: 19 February 2013 12:28 PM
To: 'Pieter Janse van Vuuren'
Cc: Patiswa Mnqokoyi
Subject: Kusile: Inligting rakende kospakkies

Beste Pieter

Hiermee die inligting rakende die kospakkies:

0828838605 or email MbonisBN@eskom.co.za, kusilecanteen@eskom.co.za

Groetnis

Nicolene Venter
Zitholele Consulting (Pty) Ltd
Thandanani Park, Matuka Close, Halfway Gardens, Midrand, South Africa
Tel. General: +27 11 207 2060 Tel. Direct: +27 11 207 2077 Fax: +27 86 676 9950 Cell: 083 377 9112
Email: nicolenev@zitholele.co.za

From: Nicolene Venter
Sent: 19 February 2013 11:54 AM
To: 'Pieter Janse van Vuuren'
Cc: Patiswa Mnqokoyi
Subject: RE: Afvalbestuurlisensie

Beste Pieter

Dankie dat jy jou e-pos adres vir ons deurgestuur het – ons het dié ook op die projek databasis aangebring.

Vind asseblief aangeheg die Agtergrondinligtingsdokument wat jou meer inligting rakende die voorgestelde projek gee.

Ek sal kyk of ek vir jou die inligting rakende die kospakkies aan die kontrakteurs kan bekom en sal dit dan vir jou deurstuur.

Vriendelike groete

Nicolene Venter
Zitholele Consulting (Pty) Ltd
Thandanani Park, Matuka Close, Halfway Gardens, Midrand, South Africa
Tel. General: +27 11 207 2060 Tel. Direct: +27 11 207 2077 Fax: +27 86 676 9950 Cell: 083 377 9112
Email: nicolenev@zitholele.co.za

From: Pieter Janse van Vuuren [<mailto:pjvv777@gmail.com>]
Sent: 15 February 2013 08:30 AM
To: Nicolene Venter
Subject: Afvalbestuurlisensie

Goeie dag Nicolene.

Ek het jou sms ontvang vir die Aansoek om Afvalbestuurlisensie vir Kusile Kragstasie.

Ek sal graag aan die Impakstudie wil deelneem.

Graag wil ek ook aan jou vra om vir my meer inligting te stuur as dit in jou vermoee is oor die kontrak wat hul nou het om kos pakkies aan die kontrakteurs asook die werkers van Kusile te maak.

Baie dankie, hoor graag van jou.
Pieter Janse van Vuuren.

Nicolene Venter

From: Nicolene Venter
Sent: 04 November 2013 12:33 PM
To: 'louise@communitylaw.co.za'
Cc: Mathys Vosloo; bokwett@eskom.co.za; Manie Kotze (kotzеха@eskom.co.za)
Subject: FW: Kusile Power Station 60 Year Ash Facility - Meeting request

Importance: High

Tracking:	Recipient	Delivery
	'louise@communitylaw.co.za'	
	Mathys Vosloo	Delivered: 04/11/2013 12:34 PM
	bokwett@eskom.co.za	
	Manie Kotze (kotzеха@eskom.co.za)	

Dear Louise,

As per our e-mail correspondences below, we would like to confirm that the purpose of the meeting with HR, Lawyers for Human Rights, Land and Housing Unit, is to discuss the EIA process to date and present the 5 sites (6 disposal scenarios) currently under environmental investigation after which a most suitable site will be recommended for decision-making to the Department of Environmental Affairs. Should HR need to discuss compensation matters, Zitholele Consulting will unfortunately not be able to answer those questions and it is believed that it is too early in the process for these type of discussions.

Currently, with the environmental information available, we can inform you that the indication is that Site F, on the farm Bossemanskraal 538 JR is likely not be a recommended site.

As previously requested, please confirm whether the Bossemanskraal 538 JR, as a whole, is part of the Claim in Restitution. If not, please provide us with a list of the portion numbers that forms part of the Land Claim.

We would like to propose a date and time for the week of 11 November 2013 and it will be appreciated if you can indicate whether the meeting can be held at your offices in Pretoria.

Kind Regards,

Nicolene Venter [Cert. Public Relations]

Senior Public Participation Practitioner

Block B, Thandanani Park, Matuka Close, Halfway Gardens, Midrand, 1685, RSA

T: +27 11 207 2060 **D:** +27 11 207 2077 **F:** +27 86 676 9950 **C:** +27 83 377 9112

E: nicolenev@zitholele.co.za **W:** www.zitholele.co.za



Please consider the environment before printing this e-mail!



----- Original message -----

From: Mathys Vosloo <mathysv@zitholele.co.za>

Date: 29/10/2013 07:53 (GMT+02:00)

To: Louise Du Plessis <louise@communitylaw.co.za>, Nicolene Venter <nicolenev@zitholele.co.za>

Subject: RE: Kusile Power Station 60 Year Ash Facility - Meeting request

Hi,

I am unfortunately not available the week of 4 – 8 November, and also not 11 and 12 November. Is there possibly an opportunity on 13, 14 or 15 November 2013?

Kind Regards,

Dr Mathys Vosloo [Ph.D. (Zoology), Pr.Sci.Nat.]

Senior Environmental Scientist

Block B, Thandanani Park, Matuka Close, Halfway Gardens, Midrand, 1685, RSA

T: +27 11 207 2060 **D:** +27 11 207 2079 **F:** +27 86 545 8835 **C:** +27 84 748 3018

E: mathysv@zitholele.co.za **W:** www.zitholele.co.za



Please consider the environment before printing this e-mail!



From: Louise Du Plessis [<mailto:louise@communitylaw.co.za>]

Sent: 28 October 2013 07:13 PM

To: Nicolene Venter

Cc: Mathys Vosloo

Subject: RE: Kusile Power Station 60 Year Ash Facility - Meeting request

Dear Nicolene

Thank you for your response, we are available on one of the following days – 29 October 2013, 4 and 5 November 2013.10.28

Regards

Louise du Plessis

357 Visagie street

Pretoria

P.O. Box 12850, Hatfield, 0028

Cell: 082 346 0744

Tel 012 320 2943 Fax: (012) 320 6852

louise@communitylaw.co.za

Disclaimer: This e-mail and any files transmitted with it are confidential and intended solely for the use of the individual or entity to whom they are addressed. Dissemination, distribution or copying of this e-mail or the information herein by anyone other than the intended recipient, or any employee or agent responsible for delivering the message to the intended recipient, is prohibited. If you have received this e-mail in error, please notify the system manager. Please note that any views or opinions presented in this e-mail are solely those of the author and do not necessarily represent our view. While us While us attempt to ensure that all e-mails are virus free, we cannot accept no liability for any damage caused by any virus transmitted by this e-mail.

From: Nicolene Venter [<mailto:nicolenev@zitholele.co.za>]

Sent: 25 October 2013 06:34 AM

To: louise@communitylaw.co.za

Cc: Mathys Vosloo

Subject: EIA: Kusile Power Station 60 Year Ash Facility - Meeting request

Dear Ms Du Plessis,

With reference to your letter dated 21 October 2013 in which Lawyers for Human Rights requested a meeting with the project team for the proposed above-mentioned project, Zitholele Consulting request that you please provide us with three proposed meeting dates (and times) within the next three weeks, and I will co-ordinate it dates with Eskom project team members and that of the EIA team.

Also, please indicate where would be a convenient place to hold this meeting:

- your offices;

- Eskom Megawatt Park, Sunninghill; or
- Zitholele's offices in Midrand.

I will forward you in a separate e-mail a map indicating the sites under environmental assessment and the farm Bossemanskraal (Maphosa Family). Would you please be so kind as to provide us with the portion number.

Looking forward to hear from you.

Kind Regards,

Nicolene Venter [Cert. Public Relations]

Senior Public Participation Practitioner

Block B, Thandanani Park, Matuka Close, Halfway Gardens, Midrand, 1685, RSA

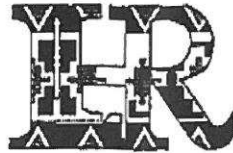
T: +27 11 207 2060 **D:** +27 11 207 2077 **F:** +27 86 676 9950 **C:** +27 83 377 9112

E: nicolenev@zitholele.co.za **W:** www.zitholele.co.za



Please consider the environment before printing this e-mail!





LAWYERS FOR HUMAN RIGHTS

LAND AND HOUSING UNIT

Kutlwanong Democracy Centre, 357 Visagie Street, Pretoria 0002

Po Box 12850 Hatfield 0028

Tel 012 3202943 Fax 012 320 6852 mail: louise@communitylaw.co.za

Your Reference:

Our Reference: LAND/DG/S47

21 October 2013

Zitholele Consulting
Me Patiswa Mngokoyi
Tel: 011 207 2060

Per fax 086 674 6121

Dear Madam


CLAIM IN RESTITUTION: MAPHOSA FAMILY to the farm BOSSEMANSKRAAL 538 JR

1. The above matter and our telephonic conversation with your Patiswa Mngokoyi on the 17th of October 2013 refer.
2. Take note that we have previously sent through correspondence to you on the 3rd of October 2013, but as of yet have not received any response.
3. As per our telephone conversation, you have noted you shall revert back to us with regards to our meeting request and the contents of our previous correspondence on Monday the 14th of October 2013.
4. We propose that we meet and discuss the planned land use of the farm.
5. We are still awaiting your response to our proposal; kindly revert back to us on a proposed date or dates when you will be available to meet with us.

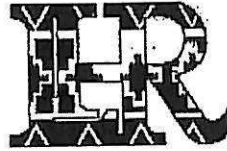
Yours Sincerely

Per. 

LOUISE DU PLESSIS

*Email to Mafkays
4/11/2013 @ 09:17*






LAWYERS FOR HUMAN RIGHTS

LAND AND HOUSING UNIT

Kutlwanong Democracy Centre, 357 Visagie Street, Pretoria 0002

Po Box 12850 Hatfield 0028

Tel 012 3202943 Fax 012 320 6852 mail: louise@communitylaw.co.za

Your Reference:

Our Reference: L du Plessis S47

9 July 2013

Zitholele Consulting
Me Patiswa Mnqokoyi
Tel: 011 207 2060

Per fax 086 674 6121

Dear Madam

**CLAIM IN RESTITUTION: MAPHOSA FAMILY to the farm
BOSSEMANSKRAAL 538 JR**

- 1 We represent the Maphosa – family who has a land claim on the farm Bossemanskraal 538 JR, some of the family members still occupy the farm as labour tenants.
- 2 Our clients also have a pending application in the Land Claims Court.
- 3 Our clients brought it to our attention that a decision was made by the commission that the farm is not restorable because of Eskom's planned activities. Our clients were never given an opportunity to address the commission.
- 4 We propose that meet and discuss the planned land use of the farm in order for us to advise our clients.
- 5 Kindly advise us when you will be available for such a meeting.

Yours faithfully,



L. du Plessis

LOUISE DU PLESSIS



Nicolene Venter

From: Nicolene Venter
Sent: 24 June 2014 06:16 AM
To: 'Andreas Moll'
Subject: RE: Is dit nie die week van die nuus nie

More Andreas,

Die finalisering van die verslag (Konsep Omgewingsimpakverslag – DEIR) het ietwat langer geneem as verwag en is in die laaste fase van finalisering.

Ek sal jou persoonlik in kennis stel sodra die verslag gereed is – ek sal jou ook kontak wanneer ons na vergaderingsdatums kyk, veral die fokusgroepvergadering met grondeienaars.

Vriendelike groete,

Nicolene Venter [Cert. Public Relations]

Senior Public Participation Practitioner

Building 1, Maxwell Office Park, Magwa Crescent West, cnr Allandale Road & Maxwell Drive, Waterfall City, Midrand, RSA

T: +27 11 207 2060 **D:** +27 11 207 2077 **F:** +27 86 676 9950 **C:** +27 83 377 9112

E: nicolenev@zitholele.co.za **W:** www.zitholele.co.za



Please consider the environment before printing this e-mail!



From: Andreas Moll [<mailto:andreas@bio-select.com>]
Sent: 24 June 2014 06:06 AM
To: Nicolene Venter
Subject: Is dit nie die week van die nuus nie

Andreas Moll
Managing Director



Blackberries • Raspberries • Blueberries
Fresh • Frozen • Canned
0827890663 • andreas@bio-select.com • 0139353402

Nicolene Venter

From: Nicolene Venter
Sent: 26 February 2014 11:04 AM
To: 'Andreas Moll'
Cc: Mathys Vosloo; Leoni Lubbe (Leonil@zitholele.co.za)
Subject: OIE: Kusile 60 Jaar As Wegdoeningsfasiliteit - Nuusbrieff
Attachments: 12712 - Kusile 60 year ADF EIA Newsletter (Afr)-Rev1.pdf; 12712-Kusile 60 year ADF EIA Newsletter-Rev 1.pdf; 12712-Let-EIA Newsletter-20131214 (Afr).pdf; 12712-Let-EIA Newsletter-20131214.pdf; 12712-83-Notification-Kusile 60 Year ADF EIA Newsletter CommSheet-Rev 0.pdf; 12712-83-Notification-001-EIA Newsletter Property List-Rev 0.pdf; EIA Newsletter Map.pdf

Tracking:	Recipient	Delivery	Read
	'Andreas Moll'		
	Mathys Vosloo	Delivered: 26/02/2014 11:02 AM	Read: 26/02/2014 12:55 PM
	Leoni Lubbe (Leonil@zitholele.co.za)	Delivered: 26/02/2014 11:02 AM	
	Leoni Lubbe		Read: 27/02/2014 07:51 AM

Goeie More Andreas,

Vind asseblief aangeheg die OIE Nuusbrieff wat in Desember 2013 elektronies versprei was – ek heg die Engelse en Afrikaanse weergawes aan vir volledigheidshalwe en indien jy dit aan bure en/of kennisse wil versprei.

Ons verwag om binnekort opgedateerde inligting te met betrekking tot die omgewingsverkose terrein vir die As Wegdoeningsfasiliteit – sodra dit beskikbaar is sal ons dit aan jou kommunikeer.

Aanvaar asseblief ons verskoning vir enige ongerief ervaar met die navraag vir jou kontakinligting. Ons is tans in die proses om ons databasis op datum te bring en dit blyk dat van jou kontakinligting (bv jou e-pos adres) van ons stelsel af verdwyn.

Moet asseblief nie huiwer om my te kontak indien jy enige addisionele inligting op hierdie stadium verlang nie.

Vriendelike groete



Nicolene Venter [Cert. Public Relations]

Senior Public Participation Practitioner

Building 1, Maxwell Office Park, Magwa Crescent West, cnr Allandale Road & Maxwell Drive, Waterfall City, Midrand, RSA

T: +27 11 207 2060 **D:** +27 11 207 2077 **F:** +27 86 676 9950 **C:** +27 83 377 9112

E: nicolenev@zitholele.co.za **W:** www.zitholele.co.za



Please consider the environment before printing this e-mail!



Omgewingsimpakstudies en
Waterbestuurslisensie Aansoeke vir die
voorgestelde
60 jaar aswegdoeningsfasiliteit by Kusile
Kragstasie

DEA Vers.no 12/12/20/2412 en NEAS Verw.no.: DEA/EIA/0000514/2011

**KOMMENTAARVORM
OIS NUUSBRIEF**

Desember 2013



OIE Publieke Deelname Kantoor

Nicolene Venter
Zitholele Consulting (Edms) Bpk
Posbus 6002, Halfway House, 1685
Tel: (011) 207 2076/2075/2077
Faks: 086-676-9950
E-pos: nicolenev@zitholele.co.za

Voltooi asseblief en stuur terug aan die Publieke Deelname Kantoor (inligting soos bo)

TITEL	Mnr	NAAM	Andreas	
VAN	Moll			
ORGANISASIE (Vermy asb afkortings)	Bio-Select			
ADRES	Gedeelte 10, Jakhalsfontein JR528		POSKODE	1020
TEL NO.	013 935 3402			
SELFOON NO.	082 7890 663			
FAKS NO.	086 558 1039			
E-POS ADRES	andreas@bio-select.com			
HANDTEKENING		Plaasnaam en gedeeltenommer, indien u moontlik geaffekteerde grondeienaar is of u eiendom aangrensend tot die voorgestelde terreine is	Gedeelte 10 Jakhalsfontein JR 528	
DATUM	08/01/2014			

KOMMENTAAR RAKENDE INLIGTING VOORSIEN IN DIE OIE NUUSBRIEF (Gebruik asb addisionele bladsye, indien nodig)

Ek word geraak op gedeelte 10, Jakhalsfontein wat in "possible affected property" is. Op hierdie eiendom is 70% van my organiese bessies en die pakhuys. My woonhuis en die ander 30% organiese bessies is op gedeelte 1, Jakhalsfontein, wat aangrensend is aan gedeelte 10.

Indien ek geraak word deur die ashoop word beide gedeeltes geraak en word beide gekoop!

DANKIE VIR U BYDRAE
(see reverse side for English)

Nicolene Venter

From: Nicolene Venter
Sent: 06 March 2013 08:21 AM
To: 'Andreas Moll'
Cc: Warren Kok
Subject: RE: Kusile Aswegdoenprojek (60jaar)

Tracking:	Recipient	Delivery
	'Andreas Moll'	
	Warren Kok	Delivered: 06/03/2013 08:21 AM

Beste Andreas

Soos belowe, hiermee terugvoer na die spesialisite werkswinkel wat ons verlede week gehou het. Dié werkswinkel was toe nie om die voorgestelde alternatiewe te bespreek nie maar om aan die spesialisite addisionele inligting te gee wat hulle in aanmerking moet neem met hulle detail studies en die evalueringsmetode.

Die werkswinkel waar die alternatiewe bespreek sal word vind huidiglik teen einde Maart plaas – sou die datum verander, sal ek jou weer laat weet. Dit is die verwagting dat die Konsep Omgewingsimpakverslag kort daarna aan die publiek, en julle as grondeienaars, beskikbaar gestel sal word vir insae en kommentaar.

Ek sal weer met jou in verbinding tree sodra die verslag reg is vir verspreiding.

Vriendelike groete

Nicolene Venter [Cert. Public Relations]

Senior Public Participation Practitioner

Block B, Thandanani Park, Matuka Close, Halfway Gardens, Midrand, 1685, RSA

T: +27 11 207 2060 **D:** +27 11 207 2077 **F:** +27 86 676 9950 **C:** +27 83 377 9112

E: nicolenev@zitholele.co.za **W:** www.zitholele.co.za



Please consider the environment before printing this e-mail!



Nicolene Venter

From: Andreas Moll <andreas@bio-select.com>
Sent: 06 March 2013 04:22 PM
To: Nicolene Venter
Cc: Warren Kok
Subject: RE: Kusile Aswegdoenprojek (60jaar)

Nicolene,

Dankie

A

From: Nicolene Venter [<mailto:nicolenev@zitholele.co.za>]
Sent: 03/06/2013 08:21 AM
To: Andreas Moll
Cc: Warren Kok
Subject: RE: Kusile Aswegdoenprojek (60jaar)

Beste Andreas

Soos belowe, hiermee terugvoer na die spesialisite werkswinkel wat ons verlede week gehou het. Dié werkswinkel was toe nie om die voorgestelde alternatiewe te bespreek nie maar om aan die spesialisite addisionele inligting te gee wat hulle in aanmerking moet neem met hulle detail studies en die evalueringsmetode.

Die werkswinkel waar die alternatiewe bespreek sal word vind huidiglik teen einde Maart plaas – sou die datum verander, sal ek jou weer laat weet. Dit is die verwagting dat die Konsep Omgewingsimpakverslag kort daarna aan die publiek, en julle as grondeienaars, beskikbaar gestel sal word vir insae en kommentaar.

Ek sal weer met jou in verbinding tree sodra die verslag reg is vir verspreiding.

Vriendelike groete

Nicolene Venter [Cert. Public Relations]

Senior Public Participation Practitioner

Block B, Thandanani Park, Matuka Close, Halfway Gardens, Midrand, 1685, RSA

T: +27 11 207 2060 **D:** +27 11 207 2077 **F:** +27 86 676 9950 **C:** +27 83 377 9112

E: nicolenev@zitholele.co.za **W:** www.zitholele.co.za



Please consider the environment before printing this e-mail!



No virus found in this message.

Checked by AVG - www.avg.com

Version: 2013.0.2899 / Virus Database: 2641/6146 - Release Date: 03/03/13

Nicolene Venter

From: Nicolene Venter
Sent: 12 February 2013 09:35 AM
To: 'Andreas Moll'
Cc: Patiswa Mnqokoyi
Subject: RE: Kusile Aswegdoenprojek (60jaar)

Dankie – reel vir die stuur van die CD / DVD

Nicolene Venter
Zitholele Consulting (Pty) Ltd
Thandanani Park, Matuka Close, Halfway Gardens, Midrand, South Africa
Tel. General: +27 11 207 2060 Tel. Direct: +27 11 207 2077 Fax: +27 86 676 9950 Cell: 083 377 9112
Email: nicolenev@zitholele.co.za

From: Andreas Moll [<mailto:andreas@bio-select.com>]
Sent: 12 February 2013 08:34 AM
To: Nicolene Venter
Cc: Patiswa Mnqokoyi
Subject: RE: Kusile Aswegdoenprojek (60jaar)

PO Box 1918
Bronkhorstspuit
1020

From: Nicolene Venter [<mailto:nicolenev@zitholele.co.za>]
Sent: 02/12/2013 08:09 AM
To: Andreas Moll
Cc: Patiswa Mnqokoyi
Subject: EIA: Kusile Aswegdoenprojek (60jaar)

Beste Andreas

Jy is korrek, daar is 4 areas (A (hier is ook area G1 en G2), B, C, F – ek stuur vir jou die *Locality Map* per LARGEFILESASAP (of een van die programme) – hy is sowat 12MB groot.

Die verslag is ook op Zitholele se webwerf (<http://www.zitholele.co.za/kusile-ash>) beskikbaar of as jy verkies kan ons vir jou 'n CD/DVD stuur met die verslag op – dit is ook heelwat MBs groot. Laat my asseblief weet wat jy verkies. Voorsien my asb ook van jou posbus en fisiese adres vir aflewering sou jy 'n CD/DVD verlang.

Vriendelike groete

Nicolene Venter
Zitholele Consulting (Pty) Ltd
Thandanani Park, Matuka Close, Halfway Gardens, Midrand, South Africa
Tel. General: +27 11 207 2060 Tel. Direct: +27 11 207 2077 Fax: +27 86 676 9950 Cell: 083 377 9112
Email: nicolenev@zitholele.co.za

From: Andreas Moll [<mailto:andreas@bio-select.com>]
Sent: 12 February 2013 07:02 AM

To: Nicolene Venter
Subject: RE: Email vir Andreas Moll oor Kusile As.

Nicolene,

Verfris asb my geheue.

Daar is 4 gebiede op die kortlys en ons wag vir Omgewingsake.

Kan ek 'n kopie kry van die verslag soos gestuur na Omgewingsake?

Gedeelte 10 is geregistreer in die naam van Bio-Select CC en ek is die enigste lid van Bio-Select CC. Hanna van Aswegen van Kortfontein (nie Jakhalsfontein 21) is die skoolhoof by Balmoral Laerskool. Ek het nie die nommer nie maar jy kan die skoolnommer maklik vind.

Het jy 'n tekening/kaart oor waar gedeelte 21 gelee is? Dan kan ek help.

Andreas

From: Nicolene Venter [<mailto:nicolenev@zitholele.co.za>]
Sent: 02/12/2013 06:08 AM
To: Andreas Moll
Subject: RE: Email vir Andreas Moll oor Kusile As.

Beste Andreas

Soos belowe, find asseblief aangeheg die publieke dokumente rakende die voorgestelde breiding van aswegdoenfasiliteite by die Kusile-kragstasie uitwat tot dusver versprei is:

- Bekendstellings Fase:
 - Inligtingsbrief
 - Studie-area kaart
 - Lys van plase/eiendomme wat moontlik deur die projek geraak mag word
 - Bewys van advertensies geplaas (ek was selektief en heg net Beeld en Streeknuus aan. Die advertensie was ook in die volgende koerante geadverteer)
 - Corridor Gazette
 - Die Springs Advertiser
 - Echo
 - Ekasi News
 - Mpumalanga News
 - Ridge Times
 - The Herald
 - Witbank Nuus
- Bestekopname Fase
 - Konsepverslag
 - Aankondiging dat die Konsep Omgewingsimpakverslag beskikbaar is vir kommentaar
 - Brief of belangegroep te herinner aan die publieke vergadering
 - Finaleverslag
 - Aankondiging dat die Finale Konsep Omgewingsimpakverslag aan die Departement Omgewingsake ingedien is vir besluitneming

Sal jy asseblief bevestig dat die plaas Jakhalsfontein 528, Ged 10) in jou naam geregistreer is.

En, het jy dalk die kontaknligting (selfoonnommer en e-pos adres) van jou bure of Jakhalsfontein 528, Ged 21, Hanna van Aswegen? Ons het net 'n landlyn nommer (013) 680 1081 en kom nie deur na die nommer nie.

Ons sal jou op hoogte hou en uitnooi na die volgende reeks vergaderings wat beplan word. Op hierdie stadium, moet asseblief nie huiwer om ons te kontak indien jy enige addisionele inligting verlang nie.

Vriendelike groete

Nicolene Venter

Zitholele Consulting (Pty) Ltd

Thandanani Park, Matuka Close, Halfway Gardens, Midrand, South Africa

Tel. General: +27 11 207 2060 Tel. Direct: +27 11 207 2077 Fax: +27 86 676 9950 Cell: 083 377 9112

Email: nicolenev@zitholele.co.za

From: Andreas Moll [<mailto:andreas@bio-select.com>]

Sent: 11 February 2013 07:42 PM

To: Nicolene Venter

Subject: Email vir Andreas Moll oor Kusile As.

Nicolene,

Stuur gerus aan, ek wil graag weet wat die stand van sake is. Ek is maar bekommerd.

Andreas

No virus found in this message.

Checked by AVG - www.avg.com

Version: 2013.0.2897 / Virus Database: 2639/6096 - Release Date: 02/11/13

Nicolene Venter

From: Nicolene Venter
Sent: 16 December 2013 07:14 PM
To: 'Bobby Peek'
Cc: 'Musa Chamane'; 'Rico Euripidou'; Siziwe Khanyile; Thomas Mnguni; Mathys Vosloo
Subject: RE: EIA Newsletter: Environmental Impact Assessment and Waste Management License Application for the proposed Extension for the Ash Disposal Facility at Kusile Power Station

Follow Up Flag: Follow up
Due By: 06 January 2014 08:00 AM
Flag Status: Flagged

Tracking:	Recipient	Delivery	Read
	'Bobby Peek'		
	'Musa Chamane'		
	'Rico Euripidou'		
	Siziwe Khanyile		
	Thomas Mnguni		
	Mathys Vosloo	Delivered: 16/12/2013 07:13 PM	Read: 17/12/2013 08:47 AM

Dear Bobby,

We will include Mr Chamane on the project database as the key person for Ground Work's Waste Campaign and he will receive all future project related correspondence.

Bobby, will it be fine with you if I forward the requested information to you on Monday 6 January 2014. Our Offices closed on Friday 13 December 2014 and I cannot get access to our server as it has been disconnected to be moved to our new Offices next week.

Kind Regards,

Nicolene Venter [Cert. Public Relations]

Senior Public Participation Practitioner

Block B, Thandanani Park, Matuka Close, Halfway Gardens, Midrand, 1685, RSA

T: +27 11 207 2060 **D:** +27 11 207 2077 **F:** +27 86 676 9950 **C:** +27 83 377 9112

E: nicolenev@zitholele.co.za **W:** www.zitholele.co.za



Please consider the environment before printing this e-mail!



From: Bobby Peek [<mailto:bobby@groundwork.org.za>]

Sent: 16 December 2013 07:12 AM

To: Nicolene Venter

Cc: 'Musa Chamane'; 'Rico Euripidou'; Siziwe Khanyile; Thomas Mnguni

Subject: RE: EIA Newsletter: Environmental Impact Assessment and Waste Management License Application for the proposed Extension for the Ash Disposal Facility at Kusile Power Station

Dear Nicolene

Thanks for the e-mail.

Please note that Musa Chamane (musa@groundwork.org.za), groundWork's Waste Campaign Manager is the key person on this process. Please include him on all future correspondence.

Please send us:

1. The final ROD issues by the Department of Environmental Affairs and Tourism in 2008.
2. Any analysis on the coal quality that will be supplied to Kusile Power Station.
3. The DEA's acceptance letter for the Final Scoping Report and Plan of Study.

Please note the link to the Eskom website gives a '404 not found' error.

Kind regards,

S. (Bobby) Peek
Director
groundWork, Friends of the Earth, South Africa
P.O. Box 2375
Pietermaritzburg
3200
South Africa

Tel: +27 (0) 33 342 5662
Fax: +27 (0) 33 342 5665
Cell: +27 (0) 82 464 1383
Skype: bobbysvenpeek

www.groundwork.org.za
<http://groundworksmokestack.blogspot.com/>
<http://www.facebook.com/groundWorkSA>

From: Leoni Lubbe [<mailto:LeoniL@zitholele.co.za>]

Sent: 13 December 2013 02:25 PM

To: 'Bobby Peek'

Subject: EIA Newsletter: Environmental Impact Assessment and Waste Management License Application for the proposed Extension for the Ash Disposal Facility at Kusile Power Station

Mr Bobby Peek
GroundWork - Friends of the Earth South Africa
PETRUSVILLE

Dear Mr Peek,

Please find attached, for your attention, the following documents:

- EIA Newsletter
- EIA Newsletter Comment Form
- EIA Locality Map
- List of potentially affected properties

We are looking forward to receiving your comments.

(Afrikaanse weergawe van korrespondensie sal binnekort versprei word)

Kind Regards,

Nicolene Venter [Cert. Public Relations]

Senior Public Participation Practitioner

Zitholele Consulting

Block B, Thandanani Park, Matuka Close, Halfway Gardens, Midrand, 1685, RSA

T: +27 11 207 2060 **D:** +27 11 207 2077 **F:** +27 86 676 9950 **C:** +27 83 377 9112

E: nicolenev@zitholele.co.za **W:** www.zitholele.co.za

Please consider the environment before printing this e-mail!

Nicolene Venter

From: Leoni Lubbe
Sent: 27 February 2014 02:06 PM
To: alcedo@lantic.net
Cc: Nicolene Venter
Subject: RE: EIA Newsletter: Environmental Impact Assessment and Waste Management License Application for the proposed Extension for the Ash Disposal Facility at Kusile Power Station

Middag Mnr Pienaar

Baie dankie vir U epos.

U is welkom om die Finale Bestekopnameverslag van die internet af te laai <http://www.zitholele.co.za/kusile-ash>. Dit is te groot om met epos te stuur.

Laat weet ons asseblief indien U nie regkom nie, dan stuur ons vir U 'n CD.

Vriendelike groete

Leoni Lubbe [Cert. Public Relations]

Project Administrator

Building 1, Maxwell Office Park, Magwa Crescent West, cnr Allandale Road & Maxwell Drive, Waterfall City, Midrand, RSA

T: +27 11 207 2060 **D:** 011 088 8463 **F:** +27 86 676 9950 **C:** +27 82 897 4173

E: leonil@zitholele.co.za **W:** www.zitholele.co.za

Please consider the environment before printing this e-mail!



From: Hennie Pienaar [<mailto:alcedo@lantic.net>]

Sent: 26 February 2014 08:33 AM

To: Leoni Lubbe

Subject: RE: EIA Newsletter: Environmental Impact Assessment and Waste Management License Application for the proposed Extension for the Ash Disposal Facility at Kusile Power Station

Middag Mev Lubbe

Dankie vir die inligting. Stuur asb vir my n afskrif van die omgewings studie wat gedoen is. U kan dit gerus na die epos adres aanstuur of kontak my en ek sal vir u nadres gee waarheen dit per courier gestuur kan word.

Dankie

Alcedo Boerdery

0825766678

alcedo@lantic.net

From: Leoni Lubbe [<mailto:Leonil@zitholele.co.za>]

Sent: Tuesday, February 25, 2014 1:44 PM

To: 'Hennie Pienaar'

Subject: EIA Newsletter: Environmental Impact Assessment and Waste Management License Application for the proposed Extension for the Ash Disposal Facility at Kusile Power Station

Mnr Hennie Pienaar
Alcedo Boerdery
BRONKHORSTSPRUIT

Dear Mnr Pienaar,

Please find attached, for your attention, the following documents:

- EIA Newsletter
- EIA Newsletter Comment Form
- EIA Locality Map
- List of potentially affected properties

We are looking forward to receiving your comments.

(Afrikaanse weergawe van korrespondensie sal binnekort versprei word)

Kind Regards,

Nicolene Venter [Cert. Public Relations]

Senior Public Participation Practitioner

Zitholele Consulting

Block B, Thandanani Park, Matuka Close, Halfway Gardens, Midrand, 1685, RSA

T: +27 11 207 2060 **D:** +27 11 207 2077 **F:** +27 86 676 9950 **C:** +27 83 377 9112

E: nicolenev@zitholele.co.za **W:** www.zitholele.co.za

Please consider the environment before printing this e-mail!

Nicolene Venter

From: Nicolene Venter
Sent: 29 May 2014 01:50 PM
To: dsingerza@gmail.com
Cc: Mathys Vosloo
Subject: FW: Proposed Kusile 60 Year ADF - Request for Locality map
Attachments: 12712-35-MiningProspecting Right Data Form-Rev 0.pdf

Importance: High

Dear David,

With reference to my e-mail below, I would like to follow-up whether you had an opportunity to provide us with your company's property details.

I require the information so that I can send you the relevant map.

Looking forward to hear from you.

Kind Regards,

Nicolene Venter [Cert. Public Relations]

Senior Public Participation Practitioner

Building 1, Maxwell Office Park, Magwa Crescent West, cnr Allandale Road & Maxwell Drive, Waterfall City, Midrand, RSA

T: +27 11 207 2060 **D:** +27 11 207 2077 **F:** +27 86 676 9950 **C:** +27 83 377 9112

E: nicolenev@zitholele.co.za **W:** www.zitholele.co.za



Please consider the environment before printing this e-mail!



From: Nicolene Venter
Sent: 12 May 2014 04:02 PM
To: 'dsingerza@gmail.com'
Cc: Leoni Lubbe (Leonil@zitholele.co.za)
Subject: EIA: Proposed Kusile 60 Year ADF - Request for Locality map

Good Afternoon Mr Singer,

Would you please be so kind as to provide us with your company's property details – you are also most welcome to complete the attached form which will assist us.

Thanking you in advance for the information.

Kind Regards,

Nicolene Venter [Cert. Public Relations]

Senior Public Participation Practitioner

Building 1, Maxwell Office Park, Magwa Crescent West, cnr Allandale Road & Maxwell Drive, Waterfall City, Midrand, RSA

T: +27 11 207 2060 **D:** +27 11 207 2077 **F:** +27 86 676 9950 **C:** +27 83 377 9112

E: nicolenev@zitholele.co.za **W:** www.zitholele.co.za



Please consider the environment before printing this e-mail!



From: David Singer [<mailto:dsingerza@gmail.com>]

Sent: 12 May 2014 03:44 PM

To: Leoni Lubbe

Subject: Re: Proposed Kusile 60 Year ADF-Mining & Prospecting Right Information / OIE: Voorgestelde Kusile 60 Jaar AWF: Mynreg en Prospekteerregte

Thanks,

Please may I have a locality map of the proposed sites in relation to our company's property.

Regards

On 8 May 2014 14:56, Leoni Lubbe <Leonil@zitholele.co.za> wrote:

DEA REF.NO.: 12/12/20/2412 and NEAS Reference: DEA/EIA/0000514/2011

Mr David Singer

Landowner

Farm: Nooitgedacht (Before Sunset Properties 36 (Pty) Ltd)

JOHANNESBURG

Dear Mr Singer

Zitholele Consulting would appreciate your assistance by providing us with any Mining Right and/or Prospecting Right applications that is registered against your property (Farm: Nooitgedacht (Before Sunset Properties 36 (Pty) Ltd); Portion(s)/Gedeelte(s):).

Attached for your attention is the Mining Right and/or Prospecting Right Data Form that we kindly request you to please complete and return to me before or on Friday 16 May 2014. We have included all property owners identified to date on this e-mail for the following site alternatives and proposed conveyor route:

- Site B
- Site C
- Site F
- Site G
- Site A is owned by Eskom

Also attached is the Newsletter which was sent out in December 2013.

You will be notified in due course about the Draft Environmental Impact Assessment Report which will be made public.

Your co-operation in this matter will be highly appreciated.

Thanking you.

DO Verw. No.: 12/12/20/2412 en NEAS Verw. No.: DEA/EIA/0000514/2011

Mr David Singer

Landowner

Farm: Nooitgedacht (Before Sunset Properties 36 (Pty) Ltd)

JOHANNESBURG

Beste Mr Singer

Zitholele Consulting sal u hulp waardeer om ons te voorsien van enige aansoeke om Mynreg en/of Prospekterreg wat teen u eiendom geregistreer is (Farm: Nooitgedacht (Before Sunset Properties 36 (Pty) Ltd); Portion(s)/Gedeelte(s):).

Hierby aangeheg vir u aandag is die Mynreg en/of Prospekterreg Datavorm wat ons u vriendelik versoek om in te vul en voor of op Vrydag 16 Mei 2014 aan my terug te besorg.

Ons het al die grondeienaars by hierdie e-pos ingesluit wat tot datum vir die ondergenoemde terrein-alternatiewe (insluitende die voorgestelde vervoerbandroete) geïdentifiseer is:

- Terrein B
- Terrein C
- Terrein F
- Terrein G
- Terrein A behoort aan Eskom

Ook aangeheg is die Nuusbrief wat uitgestuur was in Desember 2014.

U sal binnekort in kennis gestel word wanneer die Konsep Omgewingsimpak EvaluaeringVerslag aan die publiek beskikbaar gestel gaan word.

U samewerking in hierdie verband word hoog op prys gestel.

Byvoorbaat dankie.

Kind Regards / Vriendelike Groete

Nicolene Venter [Cert. Public Relations]
Senior Public Participation Practitioner
Building 1, Maxwell Office Park, Magwa Crescent West, cnr Allandale Road &
Maxwell Drive, Waterfall City, Midrand, RSA
T: [+27 11 207 2060](tel:+27112072060) **D:** [+27 11 207 2077](tel:+27112072077) **F:** [+27 86 676 9950](tel:+27866769950) **C:** +27 83 377 9112
E: nicolenev@zitholele.co.za **W:** www.zitholele.co.za
Please consider the environment before printing this e-mail!

Attachments / Aanhegels:

12712-35-MiningProspecting Right Data Form-Rev 0.pdf

12712-EIA Newsletter.pdf

12712-35-MiningProspecting Right Data Form (Afr)-Rev 0.pdf

12712-OIE-Nuusbiref.pdf

Nicolene Venter

From: Mathys Vosloo
Sent: 30 May 2014 09:54 AM
To: Patiswa Mnqokoyi; Smith, Cindy
Cc: Nicolene Venter
Subject: RE: EIA & WML APPLICATIONS FOR THE PROPOSED ASH DISPOSAL FACILITY AT KUSILE POWER STATION - Project Status Update
Attachments: DXF - Kusile 60 yr ADF Site Alternatives.zip; SHP - Kusile site alternatives_Nov 2013.zip

Hi Cindy,

Please find attached a zip file with the shape files for the Kusile Site Alternatives, as well as a zip file with the DXF of the Kusile Site Alternatives.

Trust this will be in order.



Kind Regards,


Dr Mathys Vosloo [Ph.D. (Zoology), Pr.Sci.Nat.]

Senior Environmental Scientist

Building 1, Maxwell Office Park, Magwa Crescent West, cnr Allandale Road & Maxwell Drive, Waterfall City, Midrand, RSA

T: +27 11 207 2060 **D:** +27 11 207 2079 **F:** +27 86 545 8835 **C:** +27 84 748 3018

E: mathysv@zitholele.co.za **W:** www.zitholele.co.za

 Please consider the environment before printing this e-mail!



From: Patiswa Mnqokoyi

Sent: 29 May 2014 02:29 PM

To: Smith, Cindy

Cc: Mathys Vosloo; Nicolene Venter

Subject: RE: EIA & WML APPLICATIONS FOR THE PROPOSED ASH DISPOSAL FACILITY AT KUSILE POWER STATION - Project Status Update

Hi Cindy,

Thank you for your e-mail. I forward it to the project manager who will get back to shortly.

Kind Regards,

Patiswa Mnqokoyi [Cert. Public Relations and Marketing]

Divisional Administrator

Building 1, Maxwell Office Park, Magwa Crescent West, cnr Allandale Road & Maxwell Drive, Waterfall City, Midrand, RSA

T: +27 11 207 2060 **D:** +27 11 207 2074 **F:** +27 86 676 9950 **C:** +27 72 184 8653

E: patiswam@zitholele.co.za **W:** www.zitholele.co.za



From: Smith, Cindy [<mailto:cindy.smith@angloamerican.com>]
Sent: 29 May 2014 01:50 PM
To: Patiswa Mnqokoyi
Subject: RE: EIA & WML APLICATIONS FOR THE PROPOSED ASH DISPOSAL FACILITY AT KUSILE POWER STATION - Project Status Update

Dear Patiswa, can you please obtain a copy of the dgn/dxf files regarding the locations of the ash dumps?

Regards,
Cindy

From: Patiswa Mnqokoyi [<mailto:patiswam@zitholele.co.za>]
Sent: 23 May 2014 03:36 PM
Subject: EIA & WML APLICATIONS FOR THE PROPOSED ASH DISPOSAL FACILITY AT KUSILE POWER STATION – Project Status Update
Importance: High

Dear Stakeholder,

DEA Ref No 12/12/20/2412) (NEAS Reference: DEA/EIA/0000514/2011)

We would like to take this opportunity to provide you with a brief project status update since our last communication to you regarding the above-mentioned proposed project.

In December 2013 we distributed the EIA Newsletter (attached for easy reference) which contained key technical, site alternatives and environmental aspects as well as dates in terms of the EIA process (**Figure 1: EIA process flow chart**). Since then, a number of strategic matters needed to be attended to which impacted on the dates provided.

The latest project information and envisaged timelines are as follows:

- Project Status:
 - All outstanding technical issues have been sorted out and the DEIR is in an advanced stage of completion.
- Updated envisaged EIA and public participation time lines:
 - Draft Environmental Impact Assessment Report (DEIR) and Draft Environmental Management Programme (DEMPPr)
 - Envisaged review period: Tuesday 17 June 2014 to Monday 28 July 2014
 - Key Stakeholder Workshop (Government Departments, Organs of State, Chairpersons of Associations, etc)
 - Envisaged week of 23 June 2014
 - Presenting summary of the environmental findings and mitigation measures proposed
 - To receive comments on the DEIR and DEMPr from the attendees
 - Opportunity to raise any additional comments / concerns not yet raised in the EIA process
 - Focus Group Meeting with affected and adjoining landowners:
 - Envisaged week of 23 June 2014
 - Presenting summary of the environmental findings and mitigation measures proposed
 - To receive comments on the DEIR and DEMPr from the attendees
 - Opportunity to raise any additional comments / concerns not yet raised in the EIA process
 - Public Meeting (all interested and affected parties)
 - Envisaged week of 23 June 2014
 - Presenting summary of the environmental findings and mitigation measures proposed
 - To receive comments on the DEIR and DEMPr from the attendees

- Opportunity to raise any additional comments / concerns not yet raised in the EIA process
- Final Environmental Impact Assessment Report (FEIR) and Draft Environmental Management Programme (EMPr)
 - Envisaged review period: 09 September 2014 to Thursday 09 October 2014

It is important to note, that should any of the above-mentioned envisaged dates change, you will be notified accordingly.

A word of thanks to all the stakeholders who had participated thus far in the EIA and public participation processes.

Kind Regards,

Nicolene Venter [Cert. Public Relations]

Senior Public Participation Practitioner

Building 1, Maxwell Office Park, Magwa Crescent West, cnr Allandale Road & Maxwell Drive, Waterfall City, Midrand, RSA

T: +27 11 207 2060 **D:** +27 11 207 2077 **F:** +27 86 676 9950 **C:** +27 83 377 9112

E: nicolenev@zitholele.co.za **W:** www.zitholele.co.za



Please consider the environment before printing this e-mail!



Nicolene Venter

From: Desmond Sweke <desmondsweke@icon.co.za>
Sent: 08 January 2014 04:05 PM
To: Nicolene Venter
Cc: Mathys Vosloo; Leoni Lubbe; 'David Singer'; 'Leonard Singer'; 'Jonathan/M'
Subject: RE: Kusile 60 Year Ash Disposal Facility - Acknowledgement of e-mail received

Dear Nicolene
We confirm the information in your email below is correct.
With thanks
Desmond Sweke



Settlement Planning Services

☎ +27115160333

☎ 0866709678

✉ desmondsweke@icon.co.za

Mobile: +27825527385

Skype: desmond.sweke

website: www.setplan.co.za



Please consider the environment before printing this email

From: Nicolene Venter [<mailto:nicolenev@zitholele.co.za>]
Sent: 08 January 2014 07:35 AM
To: desmondsweke@icon.co.za
Cc: Mathys Vosloo; Leoni Lubbe
Subject: EIA: Kusile 60 Year Ash Disposal Facility - Acknowledgement of e-mail received

Dear Desmond,

We herewith acknowledge receipt of your e-mail dated 06 January 2013.

The team will respond to your site alternative comments shortly.

We can confirm that the following stakeholder is registered on the project database as a landowner of the Farm Nooitgedacht:

David Singer

Landowner

Before Sunset Properties 36 (Pty) Ltd & Nooitgedacht Farm

P O Box 341

JOHANNESBURG 2000

Tel.: (011) 268 5268

Fax: (011) 268 6998

Cell: 082 901 4866

It will be appreciated if the above-mentioned information can be confirmed as correct.

It was noted that Setplan, acting on behalf of **Before Sunset Properties 36 (Pty) Ltd & Nooitgedacht Farm**, is not registered on the project database and we can confirm that you, as representative from Setplan, has now been registered on the project database. We also confirm that Setplan will receive all future correspondence relating to this proposed project.

Kind Regards,

Nicolene Venter [Cert. Public Relations]

Senior Public Participation Practitioner

Block B, Thandanani Park, Matuka Close, Halfway Gardens, Midrand, 1685, RSA

T: +27 11 207 2060 **D:** +27 11 207 2077 **F:** +27 86 676 9950 **C:** +27 83 377 9112

E: nicolenev@zitholele.co.za **W:** www.zitholele.co.za



Please consider the environment before printing this e-mail!



_____ Information from ESET NOD32 Antivirus, version of virus signature database 9264
(20140108) _____

The message was checked by ESET NOD32 Antivirus.

<http://www.eset.com>

Leoni Lubbe

From: Nicolene Venter
Sent: 26 February 2014 04:39 AM
To: Leo's Engineering (leoseng@telkomsa.net)
Cc: Leoni Lubbe
Subject: RE: EIA Newsletter: Environmental Impact Assessment and Waste Management License Application for the proposed Extension for the Ash Disposal Facility at Kusile Power Station
Attachments: RE: Comment sheet for Dec 2013 regarding Ash Disposal Kusile Power Satation.

Dear Bianca,

As per my acknowledgement date 07 January 2014 of Leo's Engineering's Comment Sheet and letter received as a response to our EIA Newsletter distributed in December 2013, I can now inform you that the EIA team is closer to making a decision regarding the preferred site for the ADF.

Once finalisation has been received, we will communicate this information to stakeholders such as yourself.

A formal response to your letter will be attended to shortly.

Please do not hesitate to contact me should you have any further queries or need clarification regarding the EIA process



Kind Regards,

Nicolene Venter [Cert. Public Relations]

Senior Public Participation Practitioner

Building 1, Maxwell Office Park, Magwa Crescent West, cnr Allandale Road & Maxwell Drive, Waterfall City, Midrand, RSA

T: +27 11 207 2060 **D:** +27 11 207 2077 **F:** +27 86 676 9950 **C:** +27 83 377 9112

E: nicolenev@zitholele.co.za **W:** www.zitholele.co.za



Please consider the environment before printing this e-mail!



From: Leo's Engineering [<mailto:leoseng@telkomsa.net>]

Sent: 25 February 2014 02:14 PM

To: Leoni Lubbe

Subject: RE: EIA Newsletter: Environmental Impact Assessment and Waste Management License Application for the proposed Extension for the Ash Disposal Facility at Kusile Power Station

Afternoon Leoni,

Please find attached docs as requested.

These docs were forwarded to Nicolene Venter in January.

Can you perhaps maybe indicate as to when +- we will know the outcome of this decision?

Many Thanks

From: Leoni Lubbe [<mailto:Leoni@zitholele.co.za>]

Sent: 25 February 2014 01:44 PM

To: 'Lenert van Dalen'

Subject: EIA Newsletter: Environmental Impact Assessment and Waste Management License Application for the proposed Extension for the Ash Disposal Facility at Kusile Power Station

Mr Lenert van Dalen
L van Dalen Boerdery

Dear Mr van Dalen,

Please find attached, for your attention, the following documents:

- EIA Newsletter
- EIA Newsletter Comment Form
- EIA Locality Map
- List of potentially affected properties

We are looking forward to receiving your comments.

(Afrikaanse weergawe van korrespondensie sal binnekort versprei word)

Kind Regards,

Nicolene Venter [Cert. Public Relations]

Senior Public Participation Practitioner

Zitholele Consulting

Block B, Thandanani Park, Matuka Close, Halfway Gardens, Midrand, 1685, RSA

T: +27 11 207 2060 **D:** +27 11 207 2077 **F:** +27 86 676 9950 **C:** +27 83 377 9112

E: nicolenev@zitholele.co.za **W:** www.zitholele.co.za

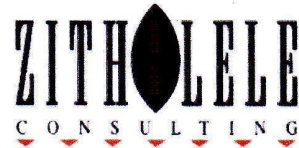
Please consider the environment before printing this e-mail!

**Environmental Impact Assessment and
Waste Management License Application for a
proposed 60 year ash disposal facility at
Kusile Power Station**

DEA Ref No 12/12/20/2412) (NEAS Reference: DEA/EIA/0000514/2011

EIA NEWSLETTER COMMENT SHEET

December 2013



EIA Public Participation Office

Nicolene Venter

Zitholele Consulting (Pty) Ltd

P O Box 6002, Halfway House, 1685

Tel: (011) 207 2076/2075/2077

Fax: 086-676-9950

Email: nicolenev@zitholele.co.za

Please complete and return to the Public Participation Office (as above)

TITLE	Mr	NAME	Lenert Hendrik Willem	
SURNAME	Van Dalen			
ORGANISATION <small>(Please do not use any acronyms)</small>	L Van Dalen Boerdery			
ADDRESS	Farm Witklip 539 Portion 29 (12 Arbor)		POSTAL CODE	
TEL NO.	011 965 6181			
CELL NO.	082 772 5194 / 012 900 6500			
FAX NO.	088 011 965 0956			
E-MAIL ADDRESS	leoser@telkomsa.net			
SIGNATURE			Farm name and portion number if you are a potentially affected landowner or own property adjacent to the proposed sites	Witklip 539 portion 29 (12 Arbor, BHS)
DATE	07-01-14			

COMMENTS ON INFORMATION AS PER THE EIA NEWSLETTER (Please use separate sheets if necessary)

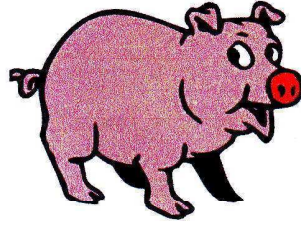
* Please see attached letter.

**THANK YOU FOR YOUR CONTRIBUTION
(sien keersy vir Afrikaans)**

L Van Dalen Boerdery

PO BOX 7403
PETIT
1512
PHONE: 0729006500

F:088 011 965 0956
E:leoseng@telkomsa.net



Witklip 539 Portion 29
12 Arbor
Bronkhorstspuit

2014-01-07

Att: Nicolene Venter

Enviromental Impact Assessment EIA Newsletter comment sheet December 2013.

Please take into consideration the following:

- 1. Our main farming operation is with pigs. L Van Dalen Boerdery is a permanent employment for LHW Van Dalen and a number of employees will be unemployed should the farm be sold.*
- 2. +- 800 pigs as well as a number of cattle on the farm cannot be re-located due to stress.*
- 3. L van Dalen Boerdery is currently in a upgrading and expanding process for the cages etc.*
- 4. Loss of income will be for 3 years due to the fact that pigs must be sold and new cages built once a new farm is selected for breeding purposes and income will be needed primarily to do so.*
- 5. There are a number of farming operations in the surrounding area's that will be affected & BHS dam is close to as well.*
- 6. Our top soil on the farm is of high quality, we plant maize the average we harvest is 8T per Ha which is very good. There will be of loss of income before we can harvest and then plant again for food as well as income.*
- 7. The drinking water is of good quality and any mining operations will have great impact.*

PP

PP
L Van Dalen

Nicolene Venter

From: HVR Boerdery <hvrkantoor@telkomsa.net>
Sent: 26 June 2013 07:44 AM
To: Nicolene Venter
Subject: RE: REMINDER Kusile Ash

Baie dankie Nicolene, ek gee dit so deur vir mnr van Rensburg.

Groete
Sonja

HvR Boerdery
hvrkantoor@telkomsa.net
Tel: 013 952 1579
Faks: 086 583 5675

Lewe sonder God is soos 'n stomp potlood... dit het geen punt!

From: Nicolene Venter [<mailto:nicolenev@zitholele.co.za>]
Sent: Wednesday, June 26, 2013 5:31 AM
To: hvrkantoor@telkomsa.net
Cc: Warren Kok
Subject: FW: REMINDER Kusile Ash

Beste Sonja,

Met verwysing na ons telefoniese gesprek gister middag rakende die OIE status van die Kusile Aswegdoeningsfasiliteit en Afvalbestuurlisensie projek bevestig ek dat die impakfase het begin waartydens die onderskeie alternatiewe terreine in detail ondersoek word om die mees geskikte terrein (omgewing sowel as tegnies) te identifiseer.

Ons sal julle op hoogte hou van enige verwickelinge in die verband.

Vriendelike groete,

Nicolene Venter [Cert. Public Relations]

Senior Public Participation Practitioner

Block B, Thandanani Park, Matuka Close, Halfway Gardens, Midrand, 1685, RSA

T: +27 11 207 2060 **D:** +27 11 207 2077 **F:** +27 86 676 9950 **C:** +27 83 377 9112

E: nicolenev@zitholele.co.za **W:** www.zitholele.co.za



Please consider the environment before printing this e-mail!



From: HVR Boerdery [<mailto:hvrkantoor@telkomsa.net>]
Sent: 20 June 2013 08:08 AM
To: Florence Rambuda
Cc: 'Anelle Lötter'
Subject: RE: REMINDER Kusile Ash

Mnr van Rensburg wil graag weet of julle al iets ivm. die asgat gehoor het.

Laat weet asseblief.

Dankie

Groete
Sonja

HvR Boerdery
hvrkantoor@telkomsa.net
Tel: 013 952 1579
Faks: 086 583 5675

Lewe sonder God is soos 'n stomp potlood... dit het geen punt!

From: Florence Rambuda [<mailto:florencer@zitholele.co.za>]

Sent: Monday, January 16, 2012 10:51 AM

To: 'John Strick'; 'George Strydom'; 'Careen Swart'; 'Tristen Taylor'; 'Elise Tempelhoff'; 'Hennie Terblanche'; 'The Editor'; 'Timothy Tlou'; 'Christie Truter'; 'Robert van Bulderen'; 'Mauritz van den Heever'; 'Bruce van den Heuvel'; 'Petrus Hendrik van der Linde'; 'Wim van der Westhuizen'; 'Corrie van Niekerk'; 'Lindi van Papendorp'; 'Hans van Rensburg'; 'Andre van Staden'; 'Nelius van Tonder'; 'Anna Venter'; 'Johan Venter'; 'Manie Venter'; 'Tobias Venter'; 'Gerhard Verdoorn'

Cc: Anelle Lötter; André Joubert

Subject: REMINDER Kusile Ash

Dear stakeholders

This is a repeat of the information sent to you on 22 December 2011

An Environmental Impact Assessment (EIA) and Waste Management License Application (WMLA) are being undertaken for the proposed extension of the ash disposal facility and associated infrastructure at Kusile Power Station between Bronkhorstspruit and Emalahleni in Mpumalanga. Please find attached a letter that will provide you with more information about:

- The Draft Scoping Report for the Environmental Impact Assessment that will be available for your review from 18 January to 27 February 2012.
- The two public meetings which will be held on 15 February 2012.

Please be so kind as to complete the attached reply sheet and send it back to our offices.

Copies of the attached documents were sent to your postal address.

Kind regards

Anelle Lotter
Zitholele Consulting
Tel: (011) 207 – 2076
Fax: 086-676-9950
Email: alotter@zitholele.co.za

Nicolene Venter

From: Ernst Wohltitz <ErnstW@TSHWANE.GOV.ZA>
Sent: 05 March 2014 03:12 PM
To: Nicolene Venter
Subject: RE: Proposed Kusile 60 Year ADF-Mining- & Prospecting Right Information / OIE: Voorgestelde Kusile 60 Jaar AWF: Mynreg en Prospekterregte



Ash disposal facility for Eskom's Kusile Power Station to accommodate 60 years of ash disposal from the Power Station.

Can you please take me off from your mailing list. I rent the farm Kort fontein applicable to this project from Miss Hanna van Aswegen tel 0827718760 or 0139321443 a couple of years back. The rent expires and I am not involve with this property any more. Please contact Miss Van Aswegen directly to make sure she is aware of all these requirements.

Thank you

Ernst Wohltitz
0832550090

From: Nicolene Venter [<mailto:nicolenev@zitholele.co.za>]
Sent: 05 March 2014 02:27 PM
To: Mathys Vosloo
Cc: Leoni Lubbe
Subject: EIA: Proposed Kusile 60 Year ADF-Mining- & Prospecting Right Information / OIE: Voorgestelde Kusile 60 Jaar AWF: Mynreg en Prospekterregte
Importance: High

Dear Landowner,

Zitholele Consulting would appreciate your assistance by providing us with any Mining Right and/or Prospecting Right applications that is registered against your property.

Attached for your attention is the *Mining Right and/or Prospecting Right Data Form* that we kindly request you to please complete and return to me before or on **Friday 14 March 2014**.

We have included all property owners identified to date on this e-mail for the following site alternatives and proposed conveyor route:

- Site B
- Site C
- Site F
- Site G

Site A is owned by Eskom

Your co-operation in this matter will be highly appreciated.

Beste Grondeienaar,

Zitholele Consulting sal u hulp waardeer om ons te voorsien van enige aansoeke om Mynreg en/of Prospekterreg wat teen u eiendom geregistreer is.

Hierby aangeheg vir u aandag is die Mynreg en/of Prospekterreg Datavorm wat ons u vriendelik versoek om in te vul en voor of op Vrydag 14 Maart 2014 aan my terug te besorg.

Ons het al die grondeienaar by hierdie e-pos ingesluit wat tot datum vir die ondergenoemde terrin-alternatiewe (insluitende die voorgestelde vervoerbandroete) geïdentifiseer is:

- Terrein B
- Terrein C
- Terrein F
- Terrein G

Terrein A behoort aan Eskom

U samewerking in hierdie verband word hoog op prys gestel.



Kind Regards / Vriendelike Groete

Nicolene Venter [Cert. Public Relations]

Senior Public Participation Practitioner

Building 1, Maxwell Office Park, Magwa Crescent West, cnr Allandale Road & Maxwell Drive, Waterfall City, Midrand, RSA

T: +27 11 207 2060 **D:** +27 11 207 2077 **F:** +27 86 676 9950 **C:** +27 83 377 9112

E: nicolenev@zitholele.co.za **W:** www.zitholele.co.za



Please consider the environment before printing this e-mail!



http://www.tshwane.gov.za/Pages/Email_disclaimer.aspx

Nicolene Venter

From: Ernst Wohltz <ErnstW@TSHWANE.GOV.ZA>
Sent: 05 March 2014 04:32 PM
To: Nicolene Venter
Subject: Read: RE: Proposed Kusile 60 Year ADF-Mining- & Prospecting Right Information / OIE: Voorgestelde Kusile 60 Jaar AWF: Mynreg en Prospekterregte
Attachments: Read RE Proposed Kusile 60 Year ADF-Mining- & Prospecting Right Information OIE Voorgestelde Kusile 60 Jaar AWF Mynreg en Prospekterregte



http://www.tshwane.gov.za/Pages/Email_disclaimer.aspx

**DEIR NOTIFICATION AND PUBLIC MEETING
INVITATION LETTER DISTRIBUTED TO ALL
REGISTERED I&APs WILL BE INCLUDED IN THE
FINAL EIR**