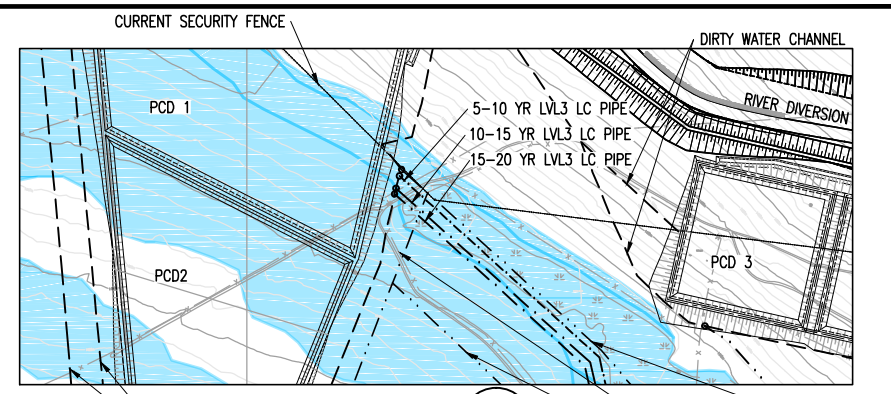
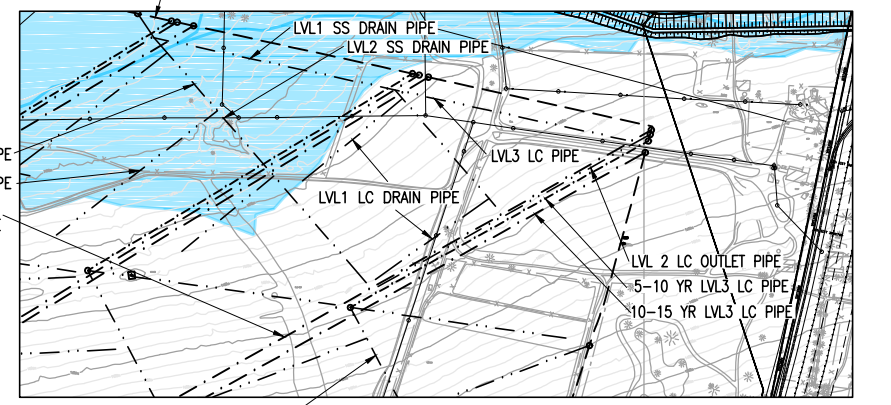


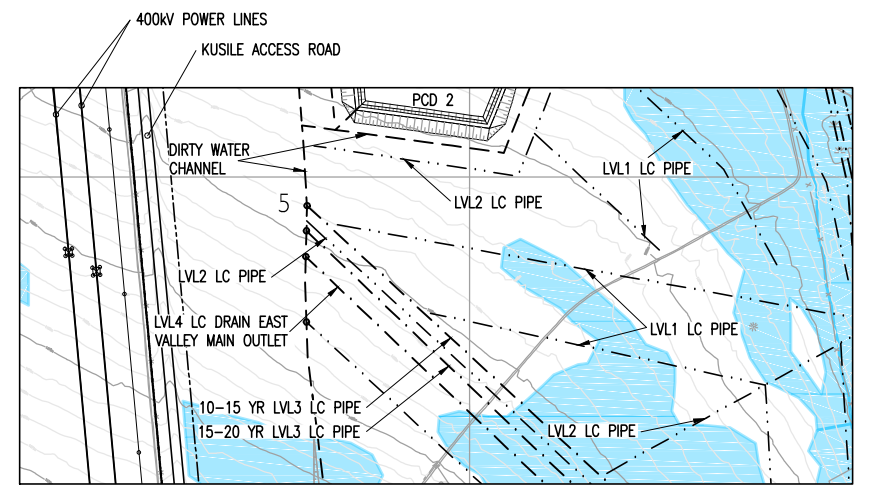
PLAN
1:12 500



DETAIL 1
SCALE 1:5000



DETAIL 2
SCALE 1:5000



DETAIL 3
SCALE 1:5000

- KEY**
- DELINEATED WETLAND
 - COAL RESERVES
 - AREA RESERVED FOR NORMAL TOPSOIL STORAGE
 - AREA RESERVED FOR WETLAND TOPSOIL STORAGE

- LEGEND**
- ADF - ASH DISPOSAL FACILITY
 - LC - LEACHATE COLLECTION
 - SS - SUB SOIL

- INFORMATION**
- LVL1 LEACHATE COLLECTION PIPES - Ø 160mm HDPE PIPES
 - LVL2 LEACHATE COLLECTION PIPES - Ø 250mm HDPE PIPES
 - LVL3 LEACHATE COLLECTION PIPES - Ø 315mm HDPE PIPES
 - LVL4 LEACHATE COLLECTION PIPES - Ø 500mm HDPE PIPES
 - LVL1 SUB-SOIL DRAIN PIPES - Ø 160mm HDPE PIPES
 - LVL2 SUB-SOIL DRAIN PIPES - Ø 250mm HDPE PIPES

- NOTE:**
1. LVL1 LEACHATE COLLECTION PIPES DRAIN INTO - LVL2 LC PIPES WHICH THEN DRAIN INTO - LVL3 LC PIPES AND THEN INTO - LVL4 LC PIPES.
 2. SUBSOIL PIPES PLACED IN SAME LOCATION AS LEACHATE COLLECTION PIPES.

CO-ORD SYSTEM WGS LO 29

Rev.	Description	Name	Date	Approved
D	REVISED & ADDED STILLING BASINS, REVISED ACCESS ROADS, UPDATED TITLE BLOCK	R.McL.	27.03.14	C.C.
C	POWER STATION, ACCESS ROADS AND RIVER DIVERSION UPDATED	R.McL.	12.12.13	C.C.
B	ISSUED FOR INFORMATION	R.McL.	07.08.13	C.C.
A	ISSUED FOR DWA MEETING	R.McL.	25.06.13	C.C.

FOR DRAWING LIST SEE D121-01-001

Reference Drawings	Rev.	Revision	Name	Date	Approved

COPYRIGHT : THIS DRAWING IS THE PROPERTY OF JONES & WAGENER (PTY) LIMITED AND MAY NOT BE USED OR REPRODUCED IN WHOLE OR PART WITHOUT THEIR WRITTEN CONSENT

Jones & Wagener
Engineering & Environmental Consultants

Box 1434 Rivonia 2128 South Africa
Tel. (011) 519-0200
Fax. (011) 519-0201
Email post@jaws.co.za

Drawn	R.McL.	25.06.13
Designed	C.C.	JUNE 13
Checked	D.B.	JUNE 13
Pr. Eng. Approval	C.C.	.
Signature		

Client: **ZITHOLELE CONSULTING**

Project: **KUSILE POWER STATION
60 YEAR ASH FACILITY
EIA DETAILED CONCEPTUAL DESIGN
LC & CONTAMINATED SW LAYOUT FOR 60YEARS**

Scale	AS SHOWN	A1
Drawing No	D121-01-006	
Revision	D	