



**Royal  
HaskoningDHV**  
*Enhancing Society Together*

## **Appendix A: Maps**

# **A1: Locality Map**



# Legend

- Emergency Ash Offloading Area
- Railway Line
- Roads
- Linear Infrastructure Route
- Existing Ash Dump
- Alternative 1
- Alternative 2
- Matimba 8km Radius

Grootgeluk Coal Mine

Marapong

Matimba Power Station

Steenbokpan Road

Onverwacht

Medupi Power Station

Steenbokpan Road

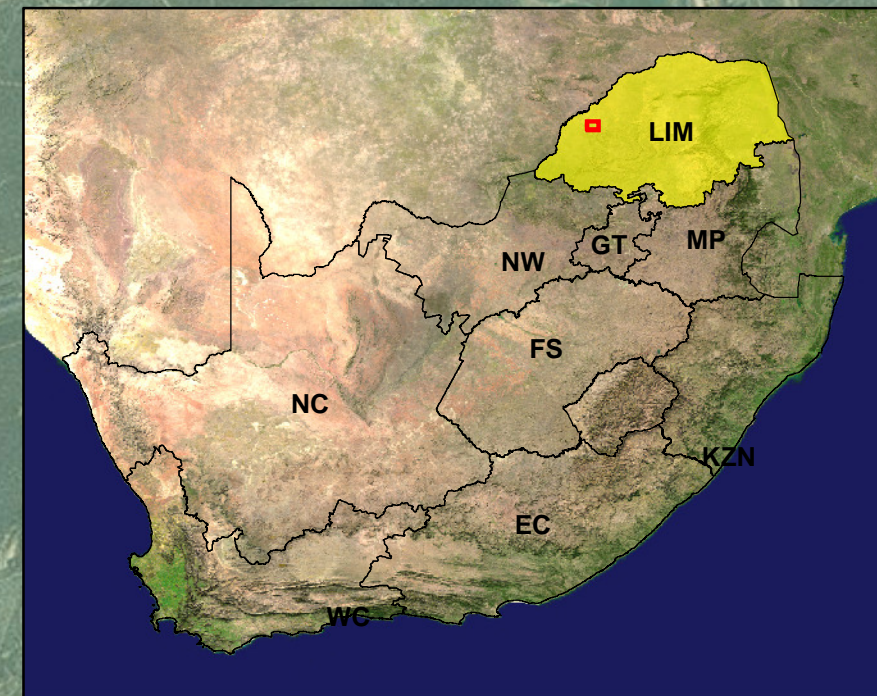
Nelson Mandela Drive

Palala Drive

Palala Drive

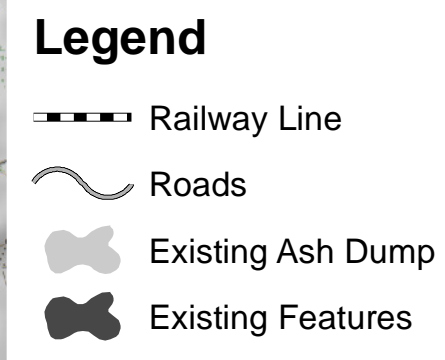
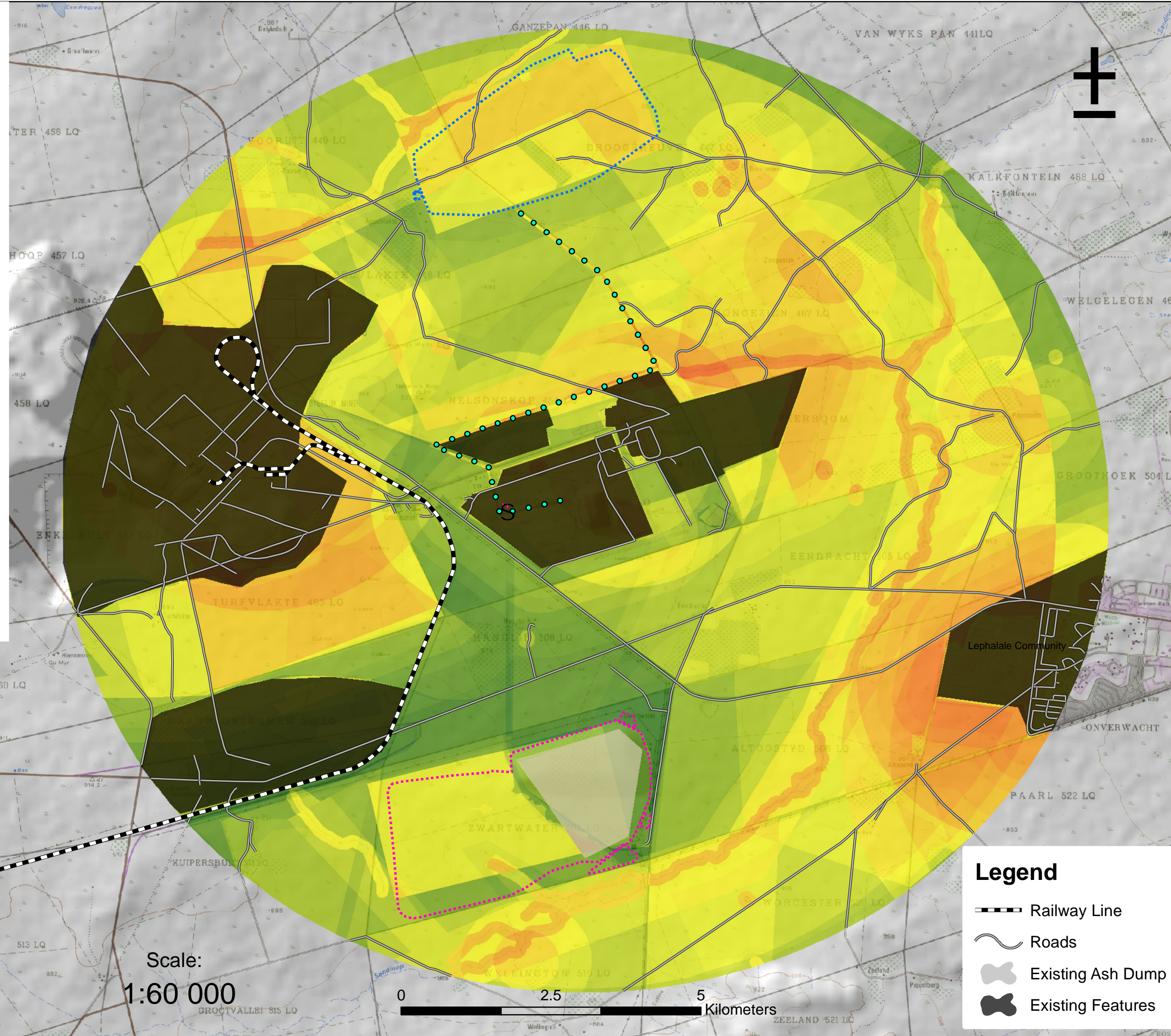
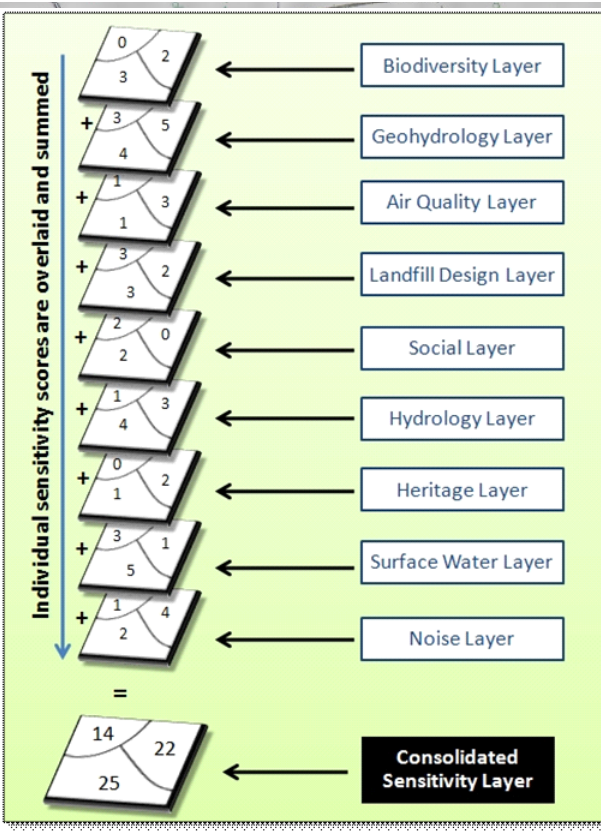
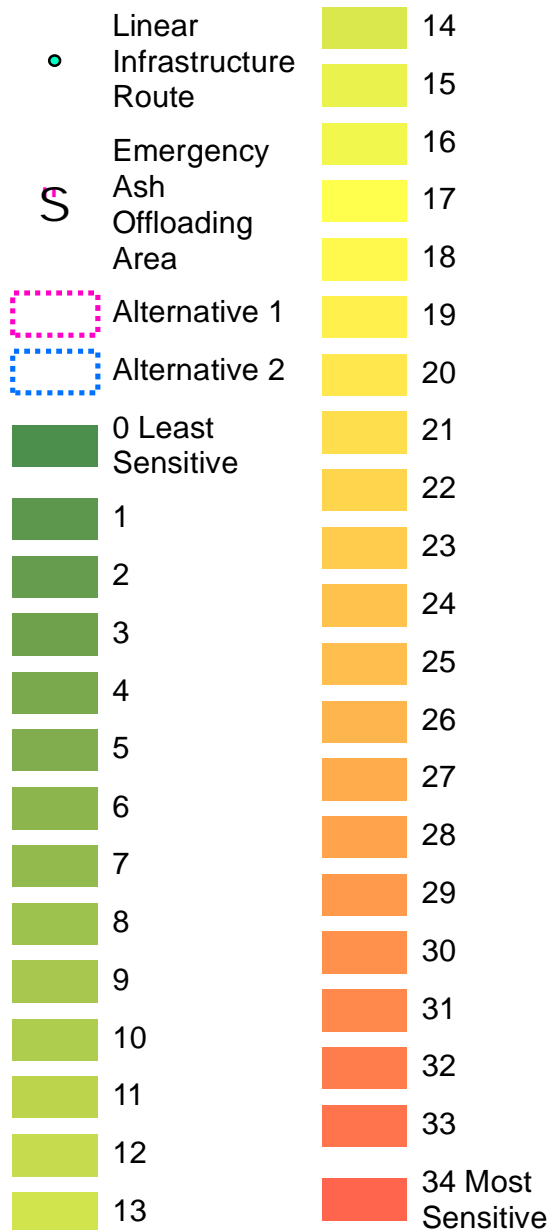
Scale:  
1:65 000

0 2.5 5 Kilometers



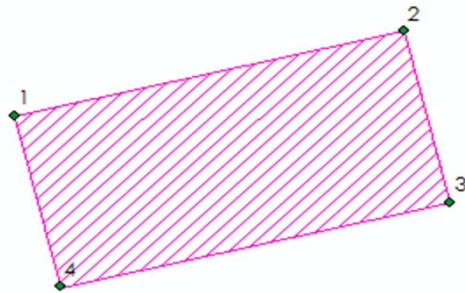
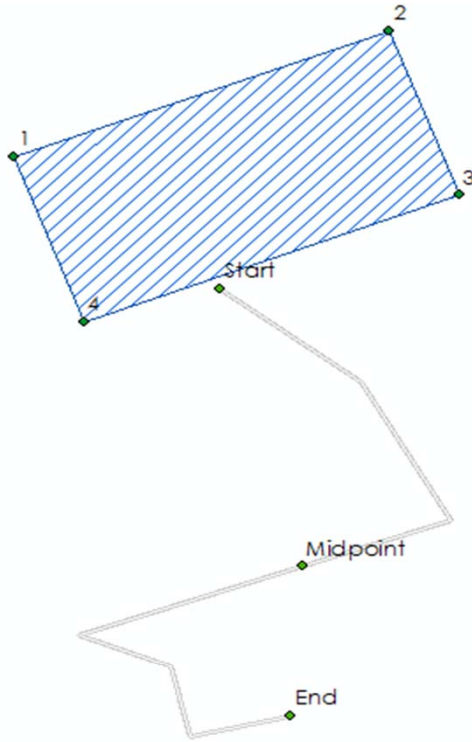
## **A2: Sensitivity Map**

# Legend



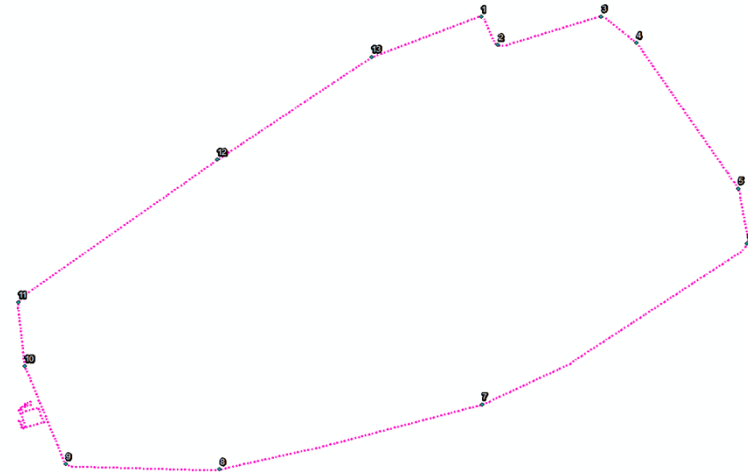
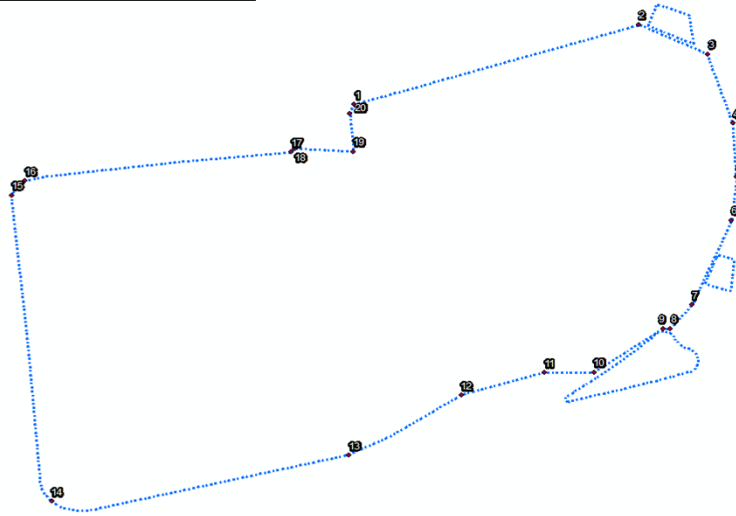
## **A3: Site Coordinates**

Alternative	X_DMS	Y_DMS	Label
Alternative 1	27° 34' 43.83" E	23° 42' 33.48" S	1
Alternative 1	27° 36' 50.78" E	23° 42' 2.66" S	2
Alternative 1	27° 37' 5.94" E	23° 43' 5.09" S	3
Alternative 1	27° 34' 58.93" E	23° 43' 35.63" S	4
Alternative 2	27° 34' 58.58" E	23° 36' 36.88" S	1
Alternative 2	27° 37' 0.79" E	23° 35' 50.72" S	2
Alternative 2	27° 37' 23.49" E	23° 36' 50.82" S	3
Alternative 2	27° 35' 21.29" E	23° 37' 36.98" S	4
LIR	27° 36' 28.42" E	23° 40' 1.29" S	Start
LIR	27° 36' 32.38" E	23° 39' 6.34" S	Midpoint
LIR	27° 36' 5.69" E	23° 37' 25.04" S	End



Alternative 1		
Corner	X_DMS	Y_DMS
1	27° 36' 2.39" E	23° 42' 17.20" S
2	27° 36' 58.15" E	23° 41' 59.66" S
3	27° 37' 11.80" E	23° 42' 6.18" S
4	27° 37' 16.71" E	23° 42' 21.37" S
5	27° 37' 17.34" E	23° 42' 33.18" S
6	27° 37' 16.29" E	23° 42' 42.68" S
7	27° 37' 8.63" E	23° 43' 1.30" S
8	27° 37' 4.42" E	23° 43' 6.49" S
9	27° 37' 2.99" E	23° 43' 6.50" S
10	27° 36' 49.40" E	23° 43' 16.07" S
11	27° 36' 39.73" E	23° 43' 16.11" S
12	27° 36' 23.33" E	23° 43' 21.13" S
13	27° 36' 1.28" E	23° 43' 34.29" S
14	27° 35' 3.03" E	23° 43' 44.41" S
15	27° 34' 55.21" E	23° 42' 37.21" S
16	27° 34' 57.76" E	23° 42' 33.98" S
17	27° 35' 49.99" E	23° 42' 27.74" S
18	27° 35' 50.75" E	23° 42' 27.03" S
19	27° 36' 2.14" E	23° 42' 27.61" S
20	27° 36' 1.45" E	23° 42' 19.31" S

Alternative 2		
Corner	X_DMS	Y_DMS
1	27° 36' 33.29" E	23° 35' 57.66" S
2	27° 36' 36.29" E	23° 36' 3.21" S
3	27° 36' 55.06" E	23° 35' 57.62" S
4	27° 37' 1.44" E	23° 36' 2.80" S
5	27° 37' 19.89" E	23° 36' 31.55" S
6	27° 37' 21.51" E	23° 36' 42.41" S
7	27° 36' 33.39" E	23° 37' 14.09" S
8	27° 35' 45.78" E	23° 37' 26.87" S
9	27° 35' 17.88" E	23° 37' 25.82" S
10	27° 35' 10.44" E	23° 37' 6.58" S
11	27° 35' 9.27" E	23° 36' 53.98" S
12	27° 35' 45.37" E	23° 36' 25.82" S
13	27° 36' 13.37" E	23° 36' 5.58" S



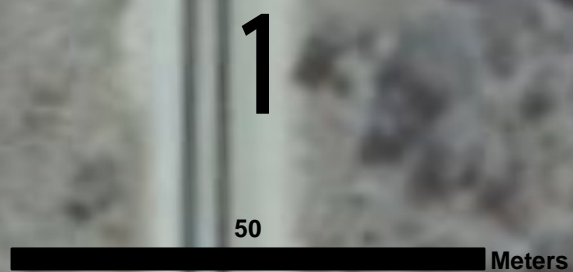




- Corner Coordinates
- Emergency Ash Dump
- Existing Ash Dump

Point	X_DD	Y_DD	X_DMS	Y_DMS	X_DDM	Y_DDM
A	27.600029	-23.668236	27° 36' 0.10" E	23° 40' 5.65" S	27° 36.002' E	23° 40.094' S
B	27.599559	-23.668355	27° 35' 58.41" E	23° 40' 6.08" S	27° 35.974' E	23° 40.101' S
C	27.599629	-23.668964	27° 35' 58.66" E	23° 40' 8.27" S	27° 35.978' E	23° 40.138' S
D	27.600204	-23.668838	27° 36' 0.73" E	23° 40' 7.82" S	27° 36.012' E	23° 40.130' S
E	27.600144	-23.668685	27° 36' 0.52" E	23° 40' 7.26" S	27° 36.009' E	23° 40.121' S
F	27.599909	-23.668734	27° 35' 59.67" E	23° 40' 7.44" S	27° 35.995' E	23° 40.124' S
G	27.599870	-23.668561	27° 35' 59.53" E	23° 40' 6.82" S	27° 35.992' E	23° 40.114' S
H	27.600100	-23.668475	27° 36' 0.36" E	23° 40' 6.51" S	27° 36.006' E	23° 40.109' S

Scale:  
1:800



**A4: Map of Area Undergoing  
Exemption Application**

Projection/Coordinate System: WGS 1984

Point	X_DD	Y_DD	X_DMS	Y_DMS
A	27.597529	-23.706734	27° 35' 51.10" E	23° 42' 24.24" S
B	27.601350	-23.706247	27° 36' 4.86" E	23° 42' 22.49" S
C	27.601194	-23.708332	27° 36' 4.30" E	23° 42' 30.00" S
D	27.597393	-23.709462	27° 35' 50.62" E	23° 42' 34.06" S
E	27.600880	-23.718276	27° 36' 3.17" E	23° 43' 5.79" S
F	27.597008	-23.718329	27° 35' 49.23" E	23° 43' 5.99" S
G	27.599554	-23.718382	27° 35' 58.39" E	23° 43' 6.18" S
H	27.605547	-23.718170	27° 36' 19.97" E	23° 43' 5.41" S
I	27.607032	-23.721671	27° 36' 25.32" E	23° 43' 18.02" S
J	27.603425	-23.724747	27° 36' 12.33" E	23° 43' 29.09" S
K	27.597962	-23.726073	27° 35' 52.66" E	23° 43' 33.86" S



Area Undergoing Lining Exemption Application

Area Undergoing Lining Exemption Application

Area Undergoing Lining Exemption Application

Matimba 8km Radius

Alternative 1

Alternative 2

